

# DISC Trial

Instructions for the research team to take Photographs of the participant's hand in hospital

## 1. Introduction

If both hands are affected by Dupuytren's contracture please take a photograph of each hand at the Baseline Visit and only the hand selected for the DISC Trial after treatment.

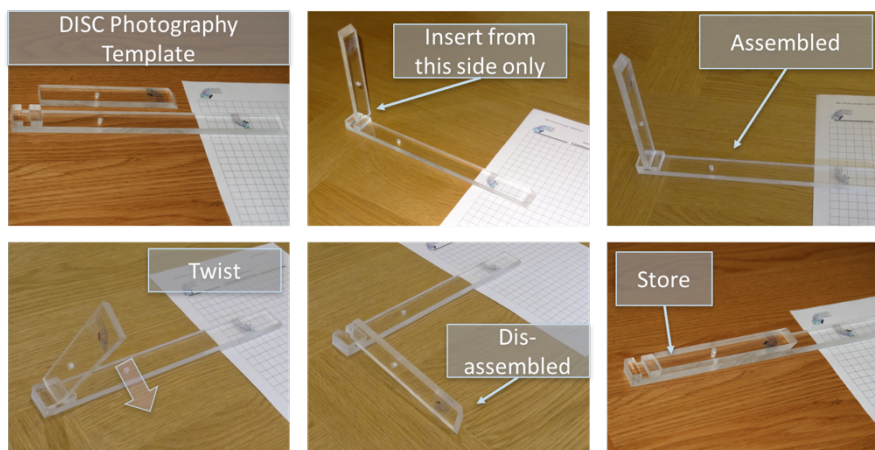
The easiest way is to take the pictures using a digital camera or a work-issued phone. It would be ideal if the same camera could be used throughout the trial. You will need to take three photographs of the hand at each visit at the study timepoints.

It is important that you take the photograph of the hand following the instructions below as this will make it easier to measure the affected finger and collect other information.

## 2. Setting up the DISC Perspex Photography Template

The photograph needs to be taken at a set distance and angle. The DISC Perspex photography template will help.

The Perspex template comes in two sections. To assemble, slide the shorter section into the groove on the longer section from one side to give a firm fit. It can only be engaged from one side.



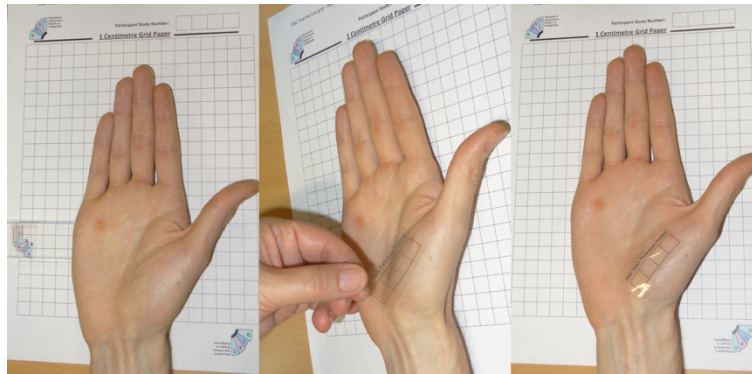
Once the photographs have been taken, the template can be dismantled by twisting and turning the shorter section until it becomes free. The two sections can then be stored flat together.

## 2.1. Photo identification

The research team will provide the following labels complete with the participant's unique Participant Study Number.

DISC Participant Study Number			

Please peel off a label and stick it at the base of the thumb as shown in this photograph:

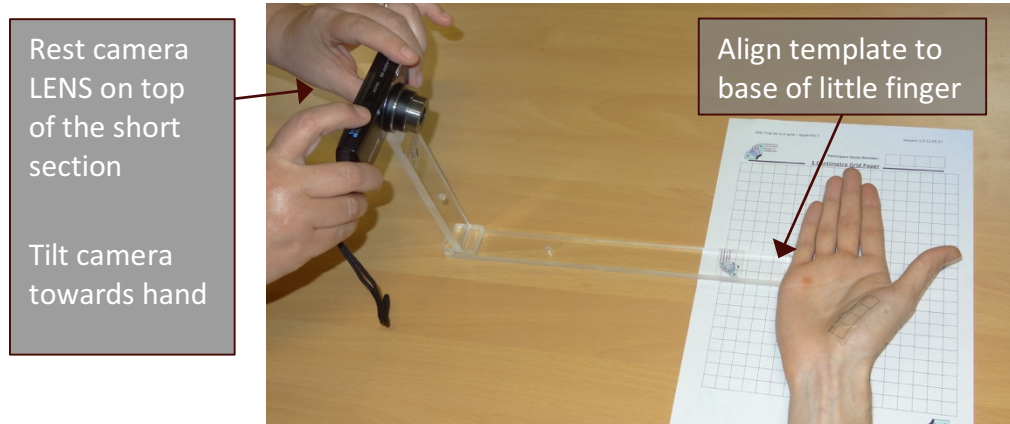


To allow us to know who the photographs belong to, please ensure the label is included in all photographs taken.

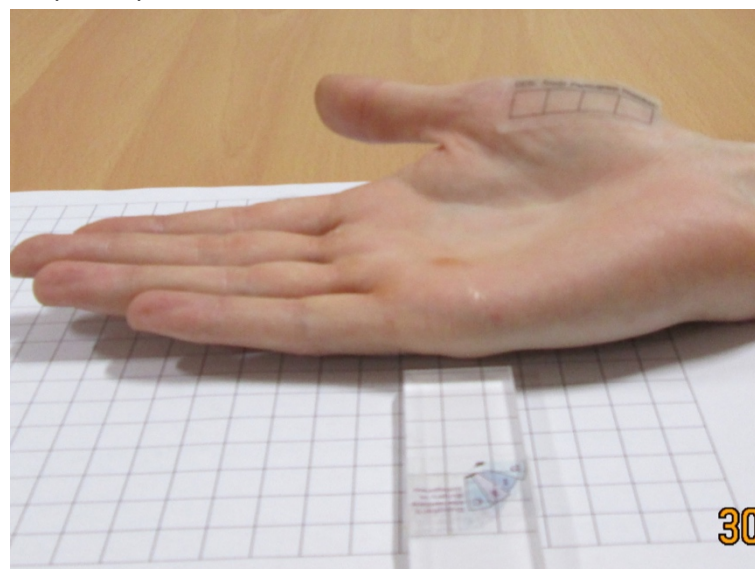
### 3. Photograph 1

1. Place the participant's hand on a flat surface, palm facing up on the grid, making sure that the back of the whole hand is in contact with the grid and not turned towards you.
2. Straighten all fingers as much as possible.
3. Photograph from the side of the hand with Little finger closest to the camera.
4. The provided Perspex template will show you how far away and how high to position the camera LENS. The longer section must be horizontal with the shorter section vertical. Tilt the camera towards the hand.
5. Adjust the zoom of camera so that the entire hand is in the frame to include all fingertips and the wrist.

An example of how to position template, camera and hand is shown below.



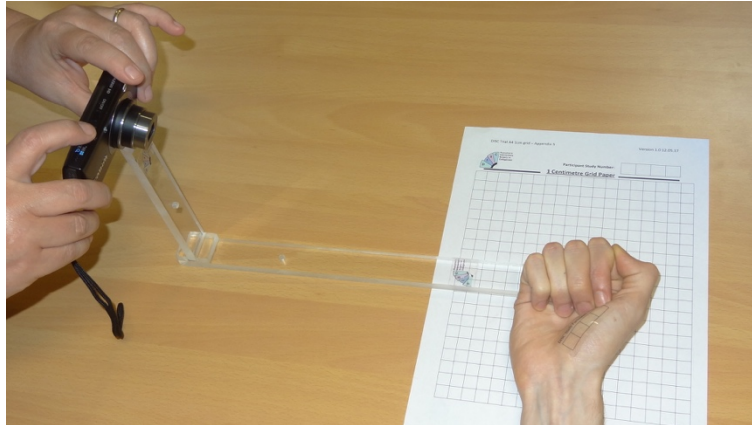
The photograph of the participant's hand should look like this:



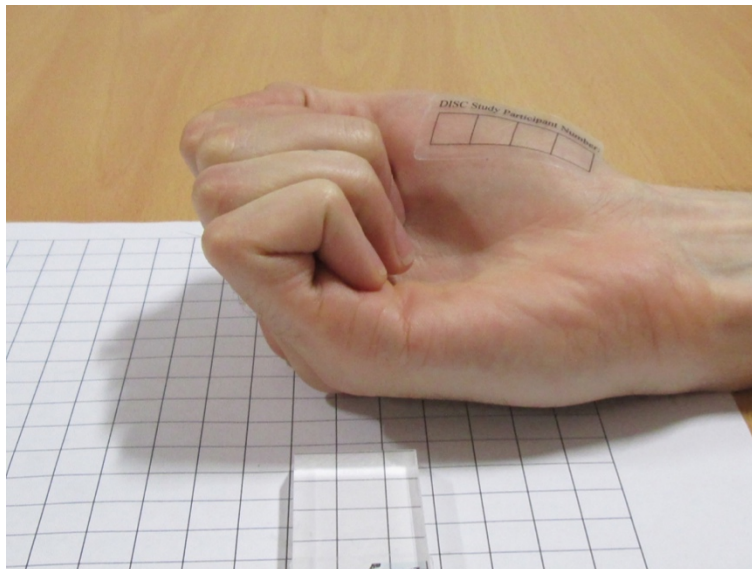
Please ensure **fingertips** and **wrist** are included in the photograph

## 4. Photograph 2

Keep the hand and camera in the same position and ask the participant to make a tight fist.



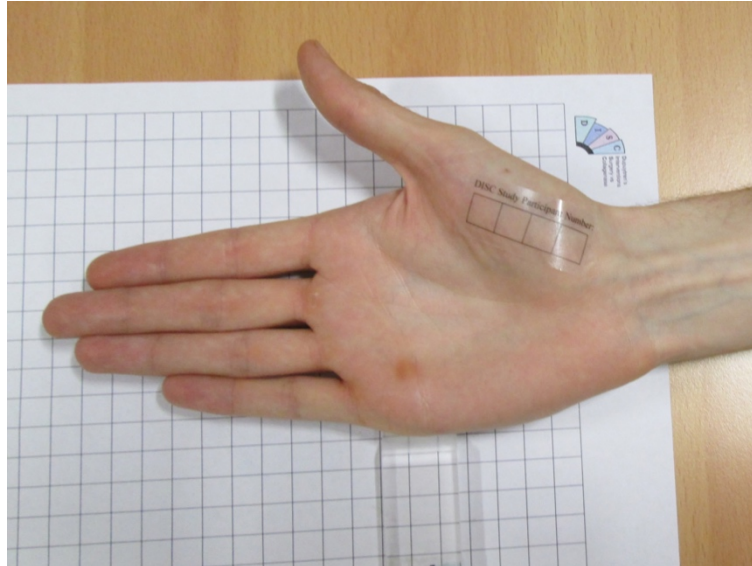
The photograph of the hand should look like this:



## 5. Photograph 3

Lay the participant's hand completely flat on the table and straighten all fingers as much as possible. Place your camera directly above the hand and take the photograph.

The photograph of the hand should look like this:



## 6. How to return your photographs to us:

Take photos with a work-issued camera phone or digital camera and send to York Trials Unit using YTU pre-paid envelopes or via email ([disc-trial-group@york.ac.uk](mailto:disc-trial-group@york.ac.uk)), adhering to local procedures for secure image transfer.

Please include the participant's DISC Participant Study Number with the photographs.