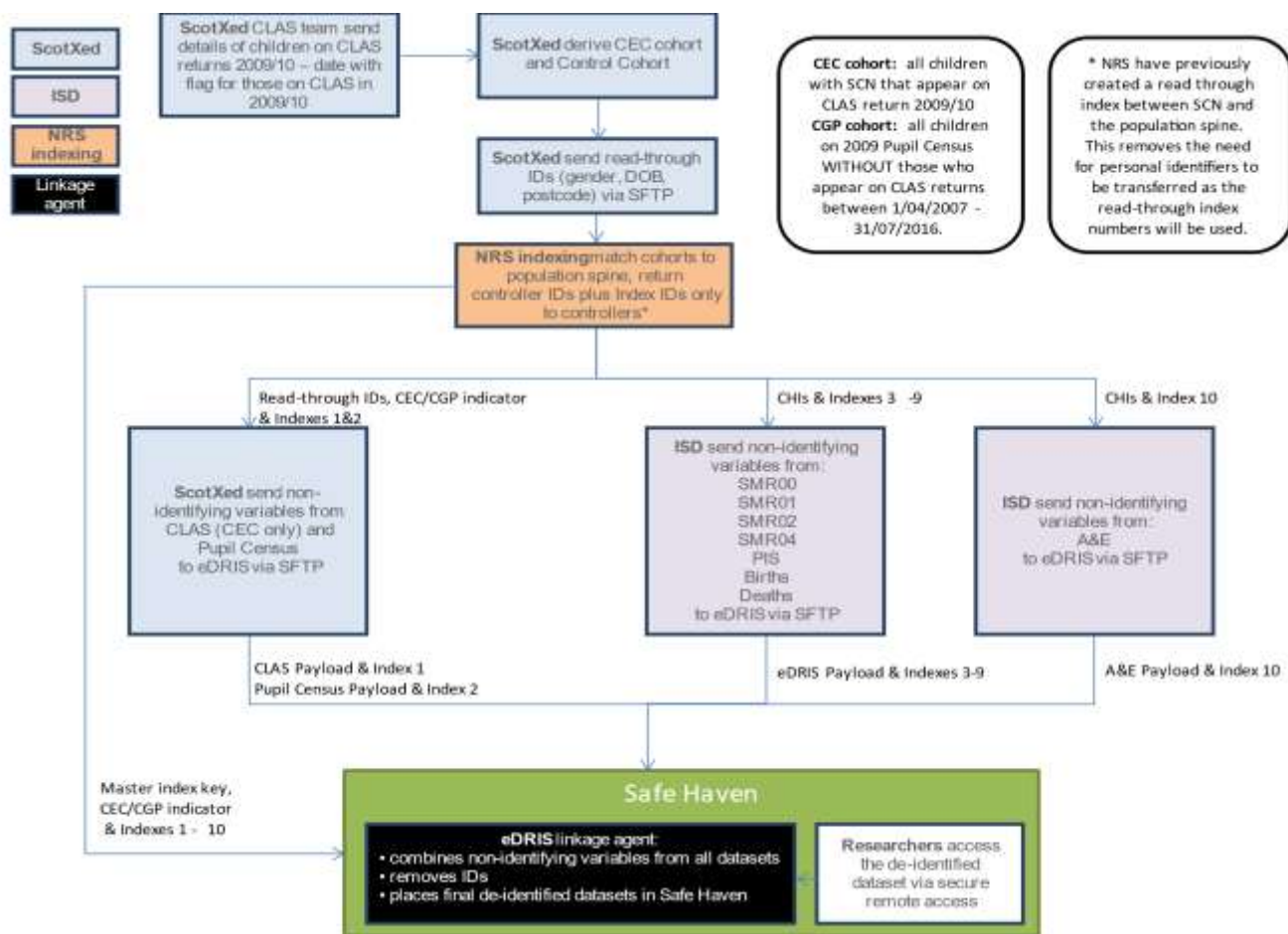


SUPPLEMENTARY MATERIAL 3. Case study linkage diagrams and timescales

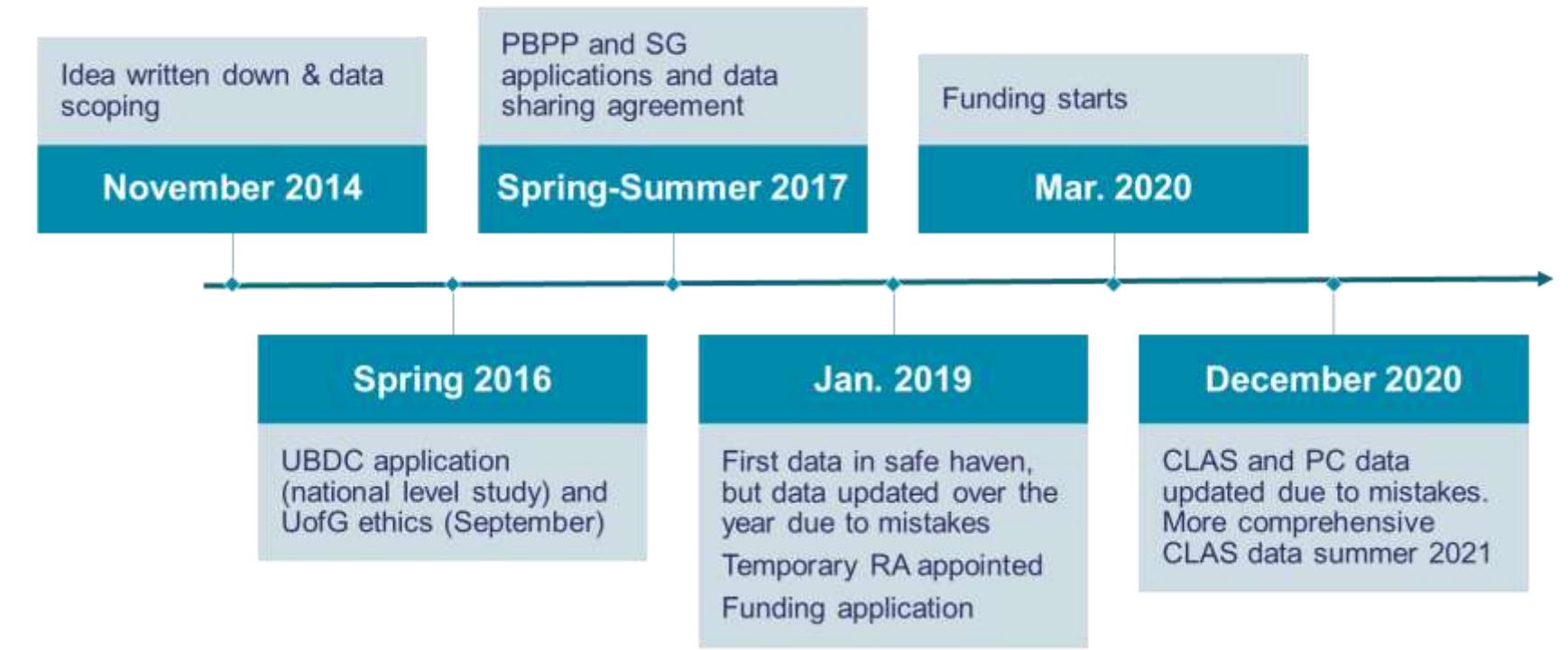
Case study A: Health outcomes of care-experienced children (Children’s Health in Care in Scotland project; CHiCS)

Figure 1. Linkage diagram for case study A



CEC – care experienced children; CGP – children in the general population; CLAS – Children Looked After Statistics; eDRIS – electronic Data Research and Innovation Service; ISD – Information Services Division (part of NHS); NRS – National Records of Scotland; ScotXed – Scottish Exchange of Data; SFTP – secure file transfer protocol; SCN – Scottish Candidate Number

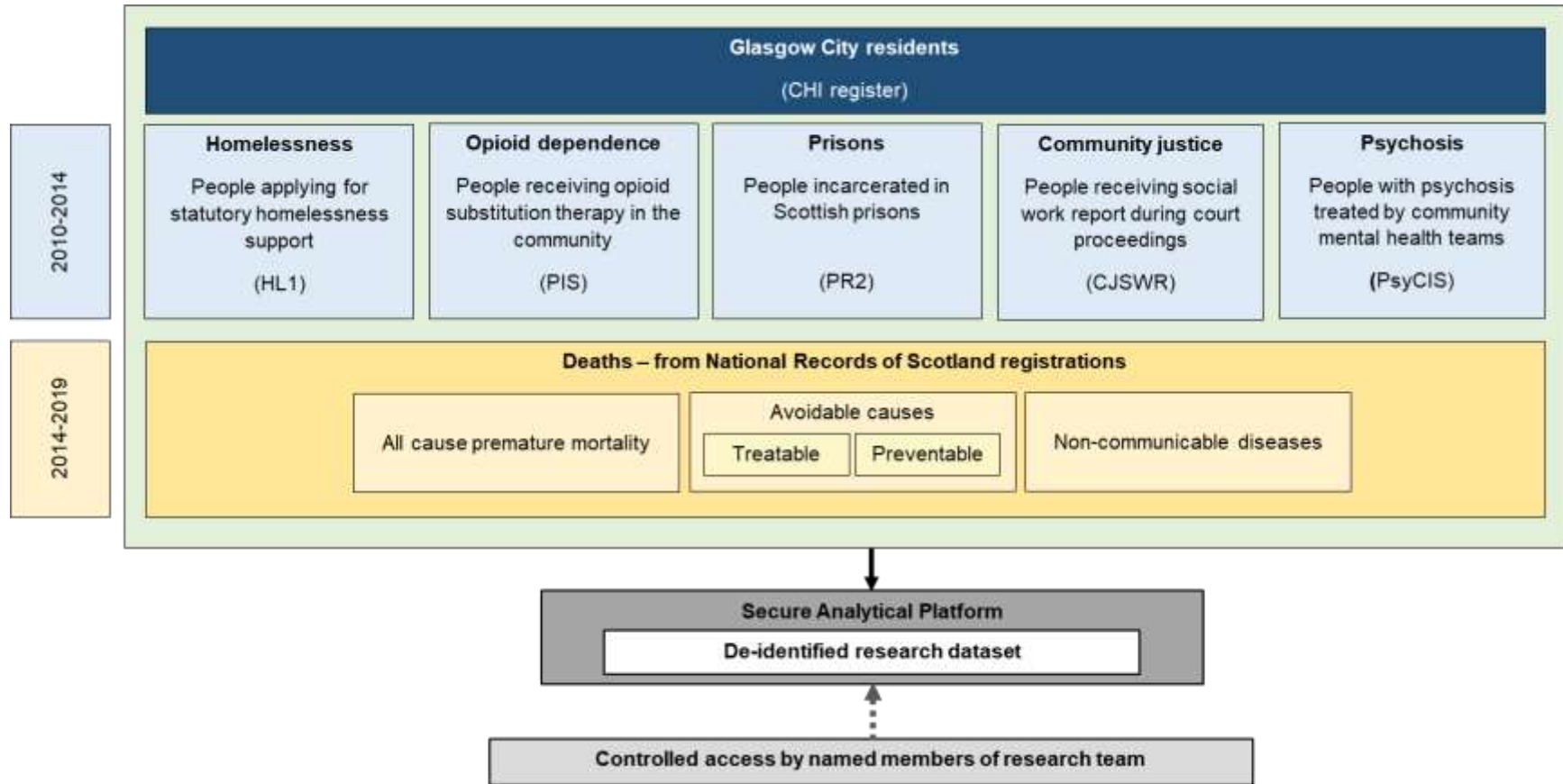
Figure 2. Timeline for case study A



CLAS – Children’s Looked After Statistics; PBPP – Public Benefit and Privacy Panel; PC – Pupil Census; RA – research assistant; SG – Scottish Government; UBDC – Urban Big Data Centre; UofG – University of Glasgow.

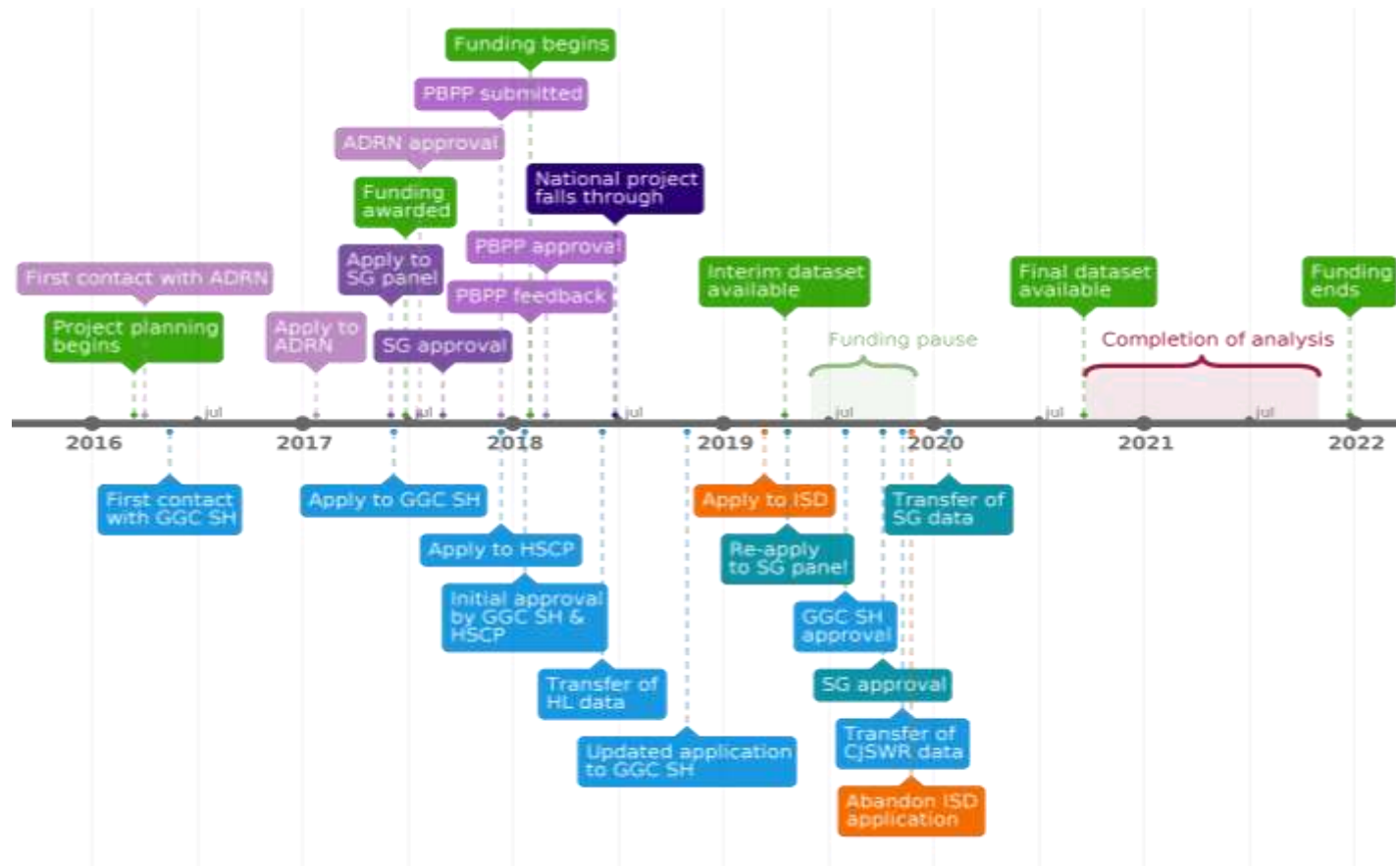
Case study B: Health outcomes among people with overlapping experiences of homelessness, offending, and substance use

Figure 3. Linkage diagram for case study B



CHI – Community Health Index; CJSWR – Criminal Justice Social Work Reports dataset; HL1 – statutory homelessness dataset; PIS – Prescribing Information System; PR2 – prisons reception dataset; PsyCIS – Psychosis Clinical Information System.

Figure 4. Timeline for case study B



ADRN – Administrative Data Research Network; CJSWR – Criminal Justice Social Work Reports; GGC SH – Greater Glasgow and Clyde Safe Haven; HL – homelessness dataset, HL1; HSCP – Health & Social Care Partnership; ISD – Information Services Division; PBPP – Public Benefit and Privacy Panel; SG – Scottish Government.

Case study C: Multimorbidity and unscheduled care among people receiving community social care

Figure 5. Linkage diagram for case study C

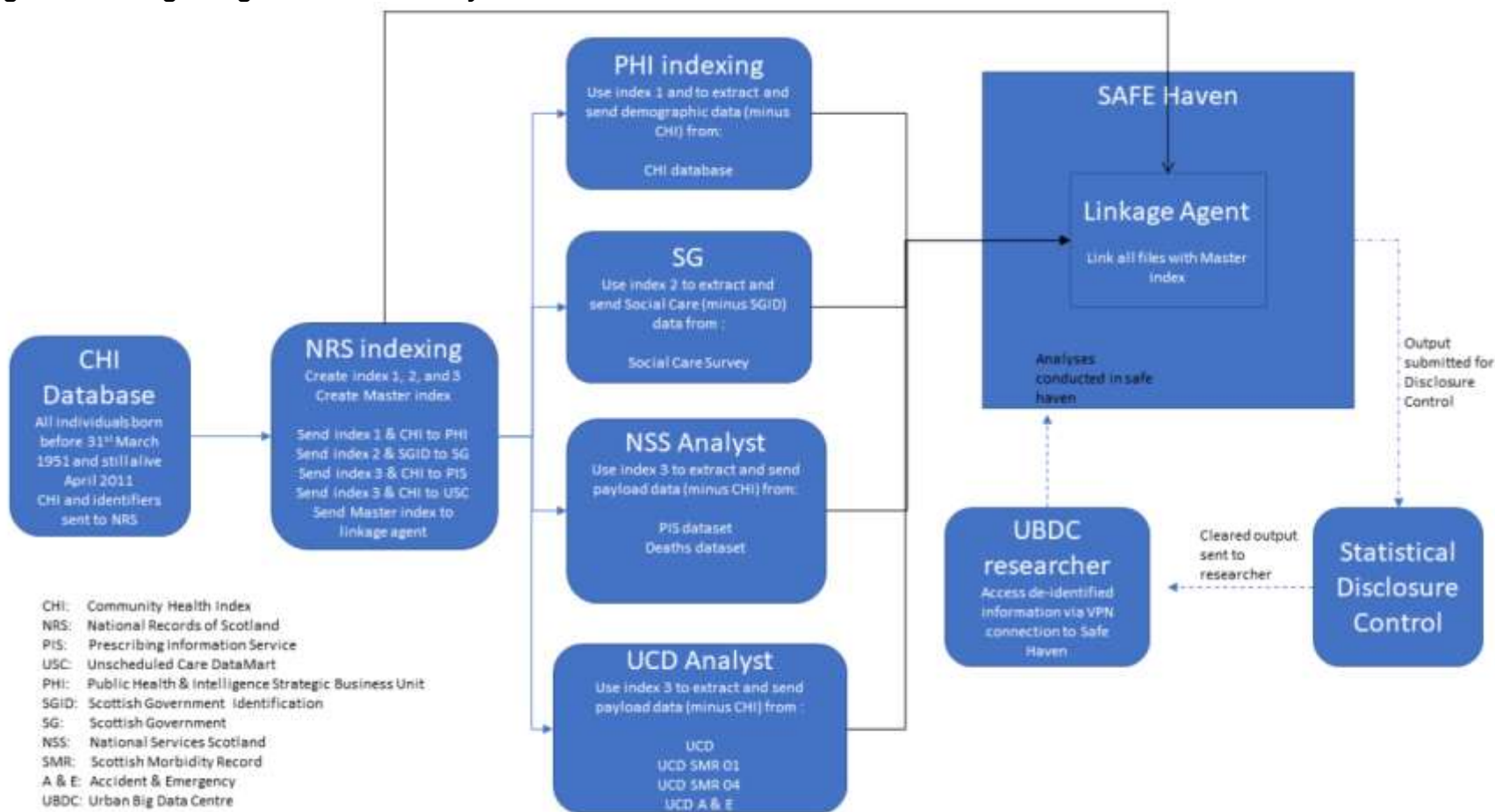


Figure 6. Timeline for case study C

