

Supplementary data figures and tables

This section includes material reproduced, updated and adapted from tables and figures previously published in Hallingberg et al ¹ and Moore et al. ² These are Open Access articles distributed in accordance with the terms of the Creative Commons Attribution (CC BY 4.0) license, which permits others to distribute, remix, adapt and build upon this work, for commercial use, provided the original work is properly cited. See: <https://creativecommons.org/licenses/by/4.0/> .

Sensitivity analyses for whole group models presented in Chapters 3 and 5

Table 1 Odds ratios and 95% confidence intervals for sensitivity analyses for final (quadratic) pre and post legislation models analysing pre-legislation change in trend (Chapter 3) and post-legislation change in trend (Chapter 5).

			Ever smoked	Regular smoking	Smoking is ok	Cannabis	Alcohol
Pre-legislation analysis	Weighted (242,855/243,111/ 165,199/239,475/ 239,190)	Level	0.88 (0.81 to 0.96) p=0.002	0.77 (0.68 to 0.88) p<0.001	1.01 (0.94 to 1.10) p=0.73	0.98 (0.89 to 1.09) p=0.73	0.84 (0.77 to 0.90) p<0.001
		Trend	1.01 (0.99 to 1.04) p=0.24	1.07 (1.03 to 1.11) p=0.002	0.88 (0.86 to 0.91) p<0.001	1.24 (1.20 to 1.28) p<0.001	1.16 (1.19 to 1.19) p<0.001
	Exclusion data collections at discrepant time of year (191,158/ 191,414/ 143,600/ 187,388/186,625)	Level	0.87 (0.82 to 0.93) p<0.001	0.79 (0.70 to 0.88) p<0.001	1.04 (0.98 to 1.10) p=0.22	0.95 (0.87 to 1.03) P=0.27	0.83 (0.78 to 0.88) p<0.001
		Trend	1.03 (1.01 to 1.06) p=0.01	1.07 (1.03 to 1.12) p=0.001	0.84 (0.81 to 0.86) p<0.001	1.23 (1.18 to 1.27) p<0.001	1.15 (1.12 to 1.18) p<0.001
	England only (51,923/51,923/ 43,177/51,811/ 51,949)	Level	1.02 (0.91 to 1.14) p=0.75	0.85 (0.69 to 1.05) P=0.13	1.18 (1.06 to 1.32) p=0.003	1.06 (0.91 to 1.24) p=0.48	1.04 (0.93 to 1.16) p=0.52
		Trend	1.04 (0.99 to 1.10) p=0.09	1.11 (1.02 to 1.21) p=0.02	0.88 (0.83 to 0.92) p<0.001	1.20 (1.13 to 1.28) p<0.001	1.07 (1.01 to 1.12) p=0.01
	Limit baseline to	Level	0.88	0.81	1.10	1.06	0.91

	2001-2009 (225,455/225,705/ 161,604/223,525/ 226,759)		(0.83 to 0.94) p<0.001	(0.73 to 0.91) p<0.001	(1.03 to 1.17) P<0.001	(0.97 to 1.15) p=0.20	(0.86 to 0.97) p=0.002
		Trend	0.98 (0.96 to 1.01) p=0.24	0.99 (0.94 to 1.03) p=0.53	0.83 (0.81 to 0.86) p<0.001	1.05 (1.02 to 1.08) p=0.02	1.05 (1.02 to 1.08) p=0.001
	With age rather than school year in England (248,304/248,560/ 169,748/244,903/ 244,647)	Level	0.90 (0.85 to 0.96) P=0.001	0.82 (0.73 to 0.91) p<0.001	1.07 (1.01 to 1.14) P=0.03	1.02 (0.94 to 1.11) p=0.70	0.87 (0.82 to 0.92) P<0.001
		Trend	1.00 (0.98 to 1.03) p=0.658	1.03 (0.99 to 1.07) p=0.08	0.87 (0.84 to 0.89) P<0.001	1.20 (1.17 to 1.24) P<0.001	1.15 (1.13 to 1.18) P<0.001
Post legislation analysis	Weighted (n =358,785 / 359,183 / 355,459)	Level	1.10 (1.03 – 1.17) P=0.004	0.89 (0.79 – 1.00) p = 0.052	-	1.24 (1.14 – 1.34) p <0.001	-
		Trend	1.09 (1.06 – 1.11) p <0.001	1.12 (1.07 – 1.18) p <0.001	-	1.15 (1.11 – 1.19) p<0.001	-
	Exclusion data collections at discrepant time of year (n =311,583 / 311,989 / 307,880)	Level	1.15 (1.08 – 1.22) p <0.001	0.95 (0.86 – 1.05) p = 0.334	-	1.27 (1.18 -1.36) p < 0.001	-
		Trend	1.11 (1.08 – 1.13) p<0.001	1.15 (1.10 – 1.20) P <0.001	-	1.20 (1.16 – 1.23) p <0.001	-
	Limit baseline to 2001-2009 (n = 340,724 / 341,116 / 338,849)	Level	1.15 (1.09 – 1.22) p < 0.001	0.96 (0.87 – 1.07) p = 0.458	-	1.33 (1.24 – 1.43) p < 0.001	-
		Trend	1.06 (1.04 – 1.09) p < 0.001	1.10 (1.05 – 1.15) P < 0.001	-	1.07 (1.04 – 1.11) p <0.001	-

Sub-group analyses by socioeconomic status for models in Chapter 3

Table 2: Odd ratios of linear and quadratic models for ever and regular smoked between 1998-2015, by socioeconomic status

		Ever smoked				Regular smoking			
		Linear	<i>P</i>	Quadratic	<i>P</i>	Linear	<i>P</i>	Quadratic	<i>p</i>
Receive FSM ^a (n = 17,574; 17,574)	Year	0.94 [0.93-0.96]	<0.001	1.02 [0.97-1.08]	0.471	0.95 [0.94-0.97]	<0.001	1.01 [0.94-1.09]	0.796
	Year ²	-	-	1.00 [0.99-1.00]	0.005	-	-	1.00 [0.99-1.00]	0.120
	Level	0.87 [0.66-1.15]	0.342	0.90 [0.68-1.19]	0.449	0.78 [0.50-1.21]	0.271	0.80 [0.52-1.25]	0.330
	Trend	0.94 [0.86-1.03]	0.204	1.01 [0.91-1.12]	0.919	0.98 [0.84-1.14]	0.778	1.03 [0.88-1.21]	0.734
Do not receive FSM ^a (n = 130,138; 130,138)	Year	0.92 [0.92-0.93]	<0.001	0.97 [0.95-0.99]	0.007	0.93 [0.93-0.94]	<0.001	0.97 [0.94-1.00]	0.075
	Year ²	-	-	1.00 [1.00-1.00]	<0.001	-	-	1.00 [1.00-1.00]	0.021
	Level	0.95 [0.84-1.08]	0.445	0.97 [0.85-1.09]	0.585	0.73 [0.58-0.92]	0.008	0.74 [0.59-0.94]	0.013
	Trend	0.92 [0.88-0.95]	<0.001	0.95 [0.91-1.00]	0.043	0.99 [0.92-1.07]	0.826	1.03 [0.94-1.11]	0.561
High FAS ^b (n = 10,299; 10,345)	Year	0.86 [0.84-0.88]	<0.001	1.09 [0.89-1.33]	0.399	0.90 [0.87-0.93]	<0.001	1.26 [0.93-1.71]	0.129
	Year ²	-	-	0.99 [0.97-1.00]	0.020	-	-	0.98 [0.96-1.00]	0.027
	Level	1.33 [0.92-1.93]	0.134	1.30 [0.90-1.89]	0.166	0.46 [0.22-0.96]	0.039	0.46 [0.22-0.95]	0.037
	Trend	0.96 [0.88-1.04]	0.300	1.22 [0.98-1.52]	0.075	1.14 [0.98-1.34]	0.099	1.63 [1.15-2.33]	0.007
Low FAS ^b (n = 11,427; 11,516)	Year	0.88 [0.86-0.90]	<0.001	1.18 [0.97-1.43]	0.094	0.90 [0.87-0.93]	<0.001	1.21 [0.93-1.58]	0.161
	Year ²	-	-	0.98 [0.97-0.99]	0.003	-	-	0.98 [0.97-1.00]	0.027
	Level	1.13 [0.81-1.56]	0.470	1.07 [0.77-1.49]	0.687	0.96 [0.57-1.62]	0.883	0.93 [0.55-1.57]	0.777
	Trend	0.99 [0.92-1.06]	0.793	1.33 [1.08-1.64]	0.007	1.03 [0.92-1.16]	0.587	1.40 [1.04-1.89]	0.025
SIMD least deprived ^c (n = 53,319; 53,319)	Year	0.97 [0.95-0.98]	<0.001	1.62 [1.07-2.46]	0.024	1.02 [0.99-1.05]	0.302	3.53 [1.69-7.38]	0.001
	Year ²	-	-	0.98 [0.96-1.00]	0.015	-	-	0.95 [0.91-0.98]	0.001
	Level	0.65 [0.57-0.75]	<0.001	0.47 [0.34-0.63]	<0.001	0.79 [0.61-1.03]	0.086	0.35 [0.20-0.61]	<0.001
	Trend	1.00 [0.97-1.04]	0.942	1.32 [1.05-1.66]	0.016	0.91 [0.84-0.98]	0.009	1.77 [1.19-2.64]	0.005
SIMD most deprived ^c (n = 66,506; 66,506)	Year	0.93 [0.92-0.95]	<0.001	1.94 [1.38-2.72]	<0.001	0.97 [0.95-0.99]	0.012	2.06 [1.20-3.54]	0.009
	Year ²	-	-	0.97 [0.95-0.98]	<0.001	-	-	0.97 [0.94-0.99]	0.007
	Level	0.79 [0.70-0.88]	<0.001	0.49 [0.38-0.62]	<0.001	0.89 [0.72-1.10]	0.272	0.54 [0.36-0.82]	0.004
	Trend	0.97 [0.94-1.00]	0.043	1.43 [1.19-1.72]	<0.001	0.90 [0.85-0.96]	<0.001	1.35 [1.00-1.81]	0.047

^aScotland and England data only ^bWales data only ^cScotland data only (Scotland and Wales each have only 2 datapoints within the 'intervention' period and hence models not including England should be treated with caution)

Table 3: Odd ratios of linear and quadratic models for young people who think trying smoking is 'OK' (between 2001-2015) by socioeconomic status,

		Trying smoking is "OK" ^a (don't know = not OK)				Smoking weekly is ok (don't know = not OK)			
		Linear	<i>P</i>	Quadratic	<i>P</i>	Linear	<i>p</i>	Quadratic	<i>p</i>
Receive FSM ^a (n = 16,229; 4,889)	Year	0.93 [0.92-0.95]	<0.001	0.87 [0.81-0.93]	<0.001	0.91 [0.90-0.92]	<0.001	0.72 [0.65-0.81]	<0.001
	Year ²	-		1.00 [1.00-1.01]	0.022	-		1.01 [1.01-1.02]	<0.001
	Level	1.10 [0.83-1.47]	0.497	1.09 [0.82-1.45]	0.548	1.15 [1.00-1.32]	0.045	1.10 [0.96-1.27]	0.152
	Trend	0.90 [0.82-0.99]	0.035	0.85 [0.77-0.95]	0.003	0.95 [0.90-1.00]	0.032	0.82 [0.75-0.89]	<0.001
Do not receive FSM ^a (n = 122,533; 30,617)	Year	0.91 [0.90-0.91]	<0.001	0.86 [0.84-0.89]	<0.001	0.93 [0.90-0.96]	<0.001	0.93 [0.69-1.27]	0.663
	Year ²	-		1.00 [1.00-1.01]	<0.001			1.00 [0.98-1.02]	0.956
	Level	1.18 [1.05-1.33]	0.004	1.18 [1.05-1.33]	0.004	1.20 [0.86-1.67]	0.294	1.20 [0.85-1.68]	0.295
	Trend	0.87 [0.84-0.91]	<0.001	0.84 [0.81-0.88]	<0.001	0.96 [0.85-1.08]	0.467	0.96 [0.76-1.21]	0.742
SIMD least deprived ^b (n = 51,948)	Year	0.92 [0.90-0.93]	<0.001	0.79 [0.53-1.17]	0.238	0.90 [0.89-0.92]	<0.001	0.70 [0.62-0.79]	<0.001
	Year ²	-		1.01 [0.99-1.03]	0.454	-		1.01 [1.01-1.02]	<0.001
	Level	0.76 [0.68-0.86]	<0.001	0.84 [0.63-1.12]	0.247	1.14 [0.98-1.33]	0.083	1.09 [0.94-1.27]	0.257
	Trend	0.97 [0.94-1.00]	0.071	0.89 [0.72-1.11]	0.311	0.94 [0.89-1.00]	0.039	0.80 [0.72-0.88]	<0.001
SIMD most deprived ^b (n = 63,628)	Year	0.92 [0.91-0.93]	<0.001	0.64 [0.45-0.90]	0.011				
	Year ²	-		1.02 [1.00-1.03]	0.039				
	Level	0.97 [0.87-1.08]	0.548	1.23 [0.96-1.59]	0.106				
	Trend	0.92 [0.89-0.95]	<0.001	0.76 [0.63-0.91]	0.0003				

^aScotland and England data only ^bScotland data only (Scotland has only 2 datapoints within the 'intervention' period and hence models not including England should be treated with caution)

Table 4: Odd ratios of linear and quadratic models for ever drunk alcohol or ever used cannabis between 1998-2015 by socioeconomic status,

		Ever drunk alcohol				Ever tried cannabis			
		Linear	<i>P</i>	Quadratic	<i>P</i>	Linear	<i>p</i>	Quadratic	<i>p</i>
Receive FSM ^a (n =17,724; 17,610)	Year	0.95 [0.94-0.96]	<0.001	1.05 [0.99-1.11]	0.118	0.95 [0.94-0.97]	<0.001	1.08 [1.01-1.15]	<0.001
	Year ²	-		0.99 [0.99-1.00]	<0.001	-		0.99 [0.99-1.00]	0.029
	Level	0.81 [0.61-1.07]	0.132	0.83 [0.63-1.10]	0.192	1.04 [0.73-1.48]	0.839	1.10 [0.77-1.57]	0.608
	Trend	0.95 [0.86-1.04]	0.260	1.03 [0.93-1.14]	0.596	0.96 [0.85-1.08]	0.504	1.07 [0.93-1.22]	0.335
Do not receive FSM ^a (n=131,173; 130,645)	Year	0.91 [0.91-0.92]	<0.001	1.09 [1.06-1.12]	<0.001	0.94 [0.93-0.94]	<0.001	1.05 [1.03-1.08]	<0.001
	Year ²	-		0.99 [0.99-0.99]	<0.001	-		0.99 [0.99-0.99]	<0.001
	Level	1.01 [0.90-1.14]	0.832	1.03 [0.92-1.16]	0.602	0.89 [0.75-1.04]	0.147	0.93 [0.79-1.10]	0.382
	Trend	0.91 [0.88-0.95]	<0.001	1.05 [1.00-1.09]	0.038	1.01 [0.96-1.07]	0.662	1.12 [1.06-1.19]	<0.001
High FAS ^b (n =10,238; 9,135)	Year	0.79 [0.76-0.82]	<0.001	0.57 [0.43-0.76]	<0.001	0.90 [0.87-0.93]	<0.001	1.71 [1.31-2.23]	<0.001
	Year ²	-		1.02 [1.00-1.03]	0.026	-		0.96 [0.95-0.98]	<0.001
	Level	0.85 [0.62-1.18]	0.334	0.93 [0.67-1.30]	0.677	1.02 [0.62-1.68]	0.939	0.96 [0.58-1.59]	0.880
	Trend	1.15 [1.07-1.24]	<0.001	0.86 [0.66-1.12]	0.274	0.97 [0.87-1.09]	0.618	1.84 [1.39-2.45]	<0.001
Low FAS ^b (n = 11,393; 10,258)	Year	0.80 [0.78-0.83]	<0.001	0.66 [0.50-0.86]	0.002	0.92 [0.89-0.95]	<0.001	1.49 [1.16-1.90]	<0.001
	Year ²	-		1.01 [1.00-1.03]	0.134	-		0.97 [0.96-0.99]	0.002
	Level	0.79 [0.59-1.05]	0.108	0.84 [0.62-1.13]	0.247	1.17 [0.77-1.79]	0.462	1.08 [0.70-1.65]	0.737
	Trend	1.17 [1.09-1.25]	<0.001	0.96 [0.75-1.24]	0.760	0.94 [0.85-1.03]	0.200	1.51 [1.16-1.96]	0.002
SIMD least deprived ^c (n = 53,566; 53,522)	Year	0.88 [0.86-0.89]	<0.001	1.53 [1.01-2.30]	0.042	0.99 [0.96-1.01]	0.271	2.60 [1.41-4.80]	0.002
	Year ²	-		0.98 [0.96-0.99]	0.008	-		0.96 [0.93-0.98]	0.002
	Level	0.76 [0.68-0.85]	<0.001	0.53 [0.39-0.70]	<0.001	0.73 [0.60-0.88]	<0.001	0.39 [0.25-0.60]	<0.001
	Trend	1.06 [1.03-1.10]	<0.001	1.43 [1.15-1.79]	0.001	1.05 [1.00-1.11]	0.043	1.77 [1.27-2.47]	0.001
SIMD most deprived ^c (n = 66,912; 66,850)	Year	0.87 [0.86-0.89]	<0.001	1.14 [0.79-1.63]	0.489	0.96 [0.95-0.98]	<0.001	2.41 [1.49-3.90]	<0.001
	Year ²	-		0.99 [0.97-1.00]	0.155	-		0.96 [0.94-0.98]	<0.001
	Level	0.89 [0.80-0.98]	0.016	0.75 [0.58-0.96]	0.025	1.01 [0.86-1.19]	0.878	0.55 [0.39-0.79]	0.001
	Trend	1.01 [0.98-1.04]	0.546	1.16 [0.95-1.41]	0.135	0.97 [0.93-1.01]	0.177	1.59 [1.22-2.06]	0.001

^aScotland and England data only ^bWales data only ^cScotland data only

Interactions for change over time in outcomes modelled in Chapter 3

Table 5: Odd ratios of quadratic models for interaction terms (gender and year group), for smoking and smoking perception outcomes among students in England, Scotland and Wales 1998-2015

	Ever smoked (n = 242,855)	<i>P</i>	Weekly smoking (n = 243,111)	<i>P</i>	Smoking OK ^a [Don't know = not OK] (n = 165,199)	<i>p</i>	Smoking weekly OK ^b [Don't know = not OK] (n = 35,890)	<i>p</i>
Year*gender	0.97 [0.97-0.98]	<0.001	0.98 [0.97-0.99]	<0.001	0.98 [0.97-0.99]	<0.001	0.97 [0.94-0.99]	0.010
Level*gender	0.99 [0.88-1.12]	0.929	0.88 [0.70-1.10]	0.248	0.96 [0.86-1.09]	0.560	0.76 [0.58-1.00]	0.049
Trend*gender	1.01 [0.98-1.04]	0.529	1.00 [0.94-1.05]	0.911	1.01 [0.98-1.04]	0.482	1.15 [1.05-1.27]	0.004
Year*school year	1.04 [1.03-1.05]	<0.001	1.04 [1.03-1.05]	<0.001	1.04 [1.03-1.05]	<0.001	1.00 [0.98-1.03]	0.719
Level*school year	1.17 [1.03-1.32]	0.015	1.21 [0.93-1.58]	0.163	1.08 [0.95-1.21]	0.235	0.91 [0.69-1.21]	0.529
Trend*school year	0.96 [0.93-0.99]	0.007	0.93 [0.87-0.99]	0.024	0.95 [0.92-0.98]	<0.001	1.03 [0.93-1.14]	0.562

^a England and Scotland data only ^b England data only

Table 6: Odd ratios of quadratic models for interaction terms (gender and year group), for alcohol and cannabis use outcomes among students in England, Scotland and Wales 1998-2015

Interaction terms	Ever alcohol use (n = 239,190)	<i>P</i>	Ever cannabis use (n = 239,457)	<i>p</i>
Year*gender	0.99 [0.99-1.00]	0.125	0.99 [0.98-0.99]	0.001
Level*gender	1.02 [0.92-1.14]	0.703	1.14 [0.96-1.35]	0.128
Trend*gender	1.00 [0.97-1.02]	0.857	0.98 [0.94-1.02]	0.352
Year*school year	1.02 [1.01-1.03]	<0.001	1.04 [1.03-1.05]	<0.001
Level*school year	1.12 [1.01-1.25]	0.039	0.94 [0.77-1.15]	0.548
Trend*school year	0.98 [0.95-1.00]	0.144	0.99 [0.94-1.04]	0.624

^a England and Scotland data only ^b England data only

Analyses of e-cigarette data in Scotland and England using survey weights

Table 7: Prevalence of ever e-cigarette use and regular (weekly) e-cigarette use in Scotland in 2013, 2015 and 2018, and odds ratios (95% confidence intervals) for contrasts from logistic regression analyses (2015 is reference) between short and long term pre-implementation periods and pre-post TPD using weighted data (2015 is the reference category)

		Percentage (95% CI) 2013	Percentage (95% CI) 2015	Percentage (95% CI) 2018	Odds ratio (95% CI) 2015 vs 2013	<i>P</i>	Odds ratio (95% CI) 2015 vs 2018	<i>P</i>
Ever e-cigarette use	All	12.0 (11.5 – 12.4)	23.4 (22.8 – 24.1)	25.7 (25.0 – 26.3)	0.43 (0.41 – 0.46)	<0.001	1.15 (1.10 – 1.21)	<0.001
	Boys	12.4 (11.8 – 13.1)	25.2 (24.3 – 26.2)	29.3 (28.3 – 30.3)	0.41 (0.38 – 0.44)	<0.001	1.26 (1.18 – 1.35)	<0.001
	Girls	11.5 (11.0 – 12.1)	21.6 (20.7 – 22.5)	22.1 (21.2 – 23.0)	0.46 (0.42 – 0.49)	<0.001	1.04 (0.97 – 1.12)	0.273
	Year 9	7.1 (6.7 – 7.6)	14.7 (14.0 – 15.4)	17.0 (16.2 – 17.8)	0.45 (0.41 – 0.49)	<0.001	1.19 (1.09 – 1.29)	<0.001
	Year 11	16.5 (15.9 – 17.2)	31.8 (30.8 – 32.9)	34.6 (33.6 – 35.6)	0.43 (0.40 – 0.45)	<0.001	1.13 (1.06 – 1.21)	<0.001
	High SES	10.6 (10.0 – 11.2)	21.4 (20.4 – 22.3)	24.0 (23.1 – 24.9)	0.42 (0.38 – 0.45)	<0.001	1.20 (1.11 – 1.29)	<0.001
	Low SES	13.1 (12.5 – 13.7)	25.1 (24.2 – 26.0)	27.5 (26.5 – 28.4)	0.44 (0.41 – 0.47)	<0.001	1.15 (1.07 – 1.23)	<0.001
	Ever smoker	38.5 (36.8 – 40.2)	71.5 (69.9 – 73.0)	75.3 (73.8 – 76.7)	0.25 (0.22 – 0.27)	<0.001	1.23 (1.10 – 1.37)	<0.001
	Never smoker	3.8 (3.5 – 4.0)	10.3 (9.8 – 10.8)	12.1 (11.5 – 12.7)	0.34 (0.31 – 0.37)	<0.001	1.22 (1.13 – 1.31)	<0.001
Regular e- cigarette use	All	0.5 (0.4 – 0.6)	2.2 (2.0 – 2.5)	2.4 (2.2 – 2.7)	0.21 (0.17 – 0.26)	<0.001	1.10 (0.95 – 1.28)	0.218
	Boys	0.7 (0.5 – 0.8)	3.1 (2.7 – 3.5)	3.4 (3.0 – 3.9)	0.21 (0.16 – 0.27)	<0.001	1.13 (0.94 – 1.36)	0.178
	Girls	0.3 (0.2 – 0.4)	1.4 (1.2 – 1.7)	1.4 (1.2 – 1.7)	0.22 (0.15 – 0.31)	<0.001	1.02 (0.79 – 1.32)	0.857
	Year 9	0.3 (0.2 – 0.4)	1.1 (1.0 – 1.4)	1.5 (1.2 – 1.8)	0.24 (0.16 – 0.36)	<0.001	1.29 (0.97 – 1.72)	0.080
	Year 11	0.7	3.3	3.4	0.20	<0.001	1.03	0.738

		(0.5 – 0.8)	(2.9 – 3.7)	(3.0 – 3.8)	(0.16 – 0.25)		(0.87 – 1.23)	
	High SES	0.4 (0.3 – 0.6)	2.0 (1.7 – 2.3)	2.3 (2.0 – 2.7)	0.21 (0.15 – 0.30)	<0.001	1.22 (0.97 – 1.53)	0.088
	Low SES	0.5 (0.4 – 0.7)	2.5 (2.2 – 2.8)	2.5 (2.2 – 2.9)	0.21 (0.16 – 0.27)	<0.001	1.02 (0.84 – 1.24)	0.838
	Ever smoker	1.8 (1.5 – 2.2)	9.7 (8.7 – 10.7)	9.7 (8.8 – 10.8)	0.17 (0.14 – 0.22)	<0.001	1.01 (0.86 – 1.19)	0.922
	Never smoker	0.1 (0.0 -0.1)	0.2 (0.2 – 0.3)	0.4 (0.3 – 0.5)	0.29 (0.16 – 0.54)	<0.001	1.71 (1.04 – 2.80)	0.035

Table 8: Prevalence of ever e-cigarette use and regular (weekly) in England in 2014, 2016 and 2018, and odds ratios (95% confidence intervals) for contrasts from logistic regression analyses between pre-implementation periods and long and short-term pre-post TPD using weighted data where available (2016 is the reference category)

		Percentage (95% CI) 2014	Percentage (95% CI) 2016	Percentage (95% CI) 2018	Odds ratio (95% CI) 2014 vs 2016	<i>p</i>	Odds ratio (and 95% CI) 2018 vs 2016	<i>p</i>
Ever e-cigarette use	All	27.5 (25.8 – 29.3)	32.4 (30.8 – 34.1)	31.6 (30.3 – 33.0)	0.79 (0.70 – 0.88.9)	<0.001	0.97 (0.88 – 1.08)	0.580
	Boys	29.1 (26.7 – 31.7)	34.7 (32.5 – 37.0)	33.7 (31.8 – 35.6)	0.77 (0.66 – 0.91)	0.001	0.96 (0.84 – 1.10)	0.558
	Girls	25.9 (23.5 – 28.4)	30.2 (27.7 – 32.7)	29.5 (27.6 – 31.5)	0.81 (0.68 – 0.97)	0.019	0.98 (0.84 – 1.15)	0.845
	Year 9	19.4 (17.2 – 21.7)	22.5 (20.4 – 24.7)	22.0 (20.3 – 23.7)	0.82 (0.68 – 1.00)	0.046	0.97 (0.83 – 1.13)	0.687
	Year 11	34.2 (31.7 – 36.8)	40.3 (37.9 – 42.7)	39.7 (37.7 – 41.7)	0.77 (0.66 – 0.90)	0.001	0.97 (0.85 – 1.11)	0.705
	White	27.8 (25.9 – 29.9)	33.1 (31.3 – 34.9)	33.9 (32.3 – 35.6)	0.78 (0.68.4 – 0.88.2)	<0.001	1.03 (0.92.4 – 1.15)	0.590
	Ethnic minority	25.4 (21.4 – 29.9)	29.9 (25.6 – 34.5)	24.9 (22.4 – 25.6)	0.81 (0.60 – 1.10)	0.182	0.79 (0.62 – 1.03)	0.077
	Ever smoker	69.6 (65.7 – 73.2)	76.2 (72.6 – 79.4)	82.0 (79.3 – 84.3)	0.70 (0.54.6 – 0.91.5)	0.009	1.41 (1.10 – 1.82)	0.008
	Never smoker	14.5 (13.0 – 16.2)	18.3 (16.7 – 20.0)	18.0 (16.8 – 19.3)	0.76 (0.64 – 0.90)	0.001	0.98 (0.85 – 1.12)	0.748
Regular e-cigarette use	All	1.8 (1.3 – 2.4)	2.7 (2.3 – 3.3)	2.6 (2.2 – 3.1)	0.64 (0.44 – 0.91)	0.014	0.94 [0.73 – 1.22]	0.665
	Boys	2.0 (1.3 – 2.9)	4.0 (3.3 – 5.0)	3.5 (2.8 – 4.3)	0.48 (0.30 – 0.75)	0.002	0.87 [0.63 – 1.18]	0.366
	Girls	1.6 (1.0 – 2.5)	1.5 (1.1 – 2.0)	1.7 (1.2 – 2.3)	1.08 (0.61 – 1.91)	0.789	1.16 [0.73 – 1.82]	0.531
	Year 9	0.9	2.0	1.3	0.43	0.019	0.63	0.066

		(0.5 – 1.6)	(1.4 – 2.8)	(0.9 – 1.8)	(0.21 – 0.87)		[0.38 – 1.03]	
	Year 11	2.5 (1.8 – 3.5)	3.4 (2.7 – 4.1)	3.7 (3.0 – 4.6)	0.73 (0.48 – 1.11)	0.145	1.10 [0.81 – 1.48]	0.536
	White	1.8 (1.3 – 2.5)	2.8 (2.3 – 3.5)	2.9 (2.4 – 3.5)	0.62 (0.42 – 0.93)	0.021	1.00 [0.75 – 1.34]	0.978
	Ethnic minority	1.5 (0.7 – 3.2)	2.1 (1.2 – 3.5)	1.6 (1.0 – 2.5)	0.72 (0.27 – 1.87)	0.495	0.81 [0.40 - 1.64]	0.553
	Ever smoker	6.6 (4.8 – 9.0)	9.5 (7.9 – 11.3)	10.2 (8.5 – 12.3)	0.65 (0.44 – 0.98)	0.038	1.07 [0.80 – 1.43]	0.662
	Never smoker	0.3 (0.1 – 0.7)	0.6 (0.3 – 1.1)	0.5 (0.3 – 0.8)	42.9 (0.14 – 1.31)	0.137	0.83 [39.6 – 1.73]	0.612

Descriptive data for all study outcomes from 1998 to 2019

Table 9: Prevalence and CI (95%) of ever smokers from 1998-2019, by year and by country (this updates Table 5 by extending beyond 2015 for all countries, and rotating to use of age rather than school year for England).

Year	All (%)	95% CI		England (%)	95% CI		Scotland (%)	95% CI		Wales (%)	95% CI	
		Low	High		Low	High		Low	High		Low	High
1998	59.6	58.4	60.8	59.6	57.5	61.7	61.9	59.6	64.2	58.0	56.1	59.9
1999	53.7	52.2	55.3	53.7	52.2	55.3	-	-	-	-	-	-
2000	52.8	51.7	53.9	52.3	50.5	54.1	50.1	48.1	52.2	56.1	54.1	58.2
2001	53.0	51.4	54.5	53.0	51.4	54.5	-	-	-	-	-	-
2002	49.8	49.2	50.4	48.7	47.1	50.2	50.1	49.5	50.8	48.4	46.4	50.4
2003	51.4	49.9	52.9	51.4	49.9	52.9	-	-	-	-	-	-
2004	47.1	46.2	47.9	47.1	45.5	48.6	47.4	46.2	48.6	45.6	43.7	47.5
2005	48.7	47.2	50.3	48.7	47.2	50.3	-	-	-	-	-	-
2006	39.7	39.1	40.2	46.2	44.5	47.8	38.6	37.9	39.2	40.6	38.8	42.4
2007	41.7	40.1	43.4	41.7	40.1	43.4	-	-	-	-	-	-
2008	37.3	36.5	38.1	40.4	38.7	42.1	36.2	35.3	37.2	-	-	-
2009	32.7	31.6	33.8	37.4	35.8	39.1	-	-	-	28.2	26.8	29.8
2010	32.4	31.9	32.8	35.4	33.8	37.1	32.1	31.7	32.6	-	-	-
2011	31.8	30.1	33.6	31.8	30.1	33.6	-	-	-	-	-	-
2012	31.6	30.0	33.2	31.6	30.0	33.3	-	-	-	-	-	-
2013	22.6	22.3	23.1	27.9	26.0	29.8	22.5	22.1	23.0	21.1	19.7	22.5
2014	23.7	22.1	25.3	23.7	22.1	25.3	-	-	-	-	-	-
2015	19.0	18.6	19.4	-	-	-	20.0	19.5	20.5	17.1	16.4	17.8
2016	23.8	22.7	25.0	23.8	22.7	25.0	-	-	-	-	-	-
2017	17.4	17.0	17.8	-	-	-	-	-	-	17.4	17.0	17.8
2018	20.5	20.0	20.9	19.9	18.8	20.9	20.6	20.1	21.2	-	-	-
2019	16.6	16.2	16.9	-	-	-	-	-	-	16.6	16.2	16.9

^aFor England, target age group is defined as those who are age 13 and 15 years of age, as opposed to year groups

Table 10: Prevalence and CI (95%) of ever smokers among students between 1998-2019, by gender and school year, in England, Scotland and Wales.

Year	Males (%)	95% CI		Females (%)	95% CI		13 year olds (%)	95% CI		15 year olds (%)	95% CI	
		Low	High		Low	High		Low	High		Low	High
1998	54.0	52.3	55.7	65.2	63.5	66.8	49.9	47.9	51.8	65.9	64.4	67.3
1999	49.9	47.7	52.1	57.9	55.6	60.2	41.8	39.6	44.1	65.1	62.9	67.2
2000	47.8	46.2	49.4	58.0	56.4	59.6	41.8	40.3	43.4	63.9	62.4	65.5
2001	50.0	47.8	52.2	56.0	53.8	58.3	42.1	39.9	44.3	63.4	61.2	65.5
2002	44.6	43.8	45.4	55.0	54.2	55.9	42.0	41.2	42.7	58.7	57.9	59.5
2003	47.4	45.3	49.5	55.5	53.3	57.6	39.8	37.7	41.9	62.3	60.3	64.3
2004	41.7	40.5	42.9	52.5	51.3	53.7	36.9	36.0	38.1	57.5	56.3	58.7
2005	43.9	41.7	46.1	53.9	51.6	56.1	35.5	33.3	37.7	61.6	59.4	63.7
2006	35.2	34.4	36.0	44.1	43.3	44.9	28.9	28.2	29.7	50.7	49.9	51.6
2007	36.7	34.5	39.0	46.9	44.5	49.3	29.2	27.0	31.5	52.9	50.5	55.2
2008	34.9	33.8	36.1	39.7	38.5	40.9	25.7	24.6	26.7	49.7	48.5	50.9
2009	29.9	28.4	31.4	35.7	34.0	37.3	20.5	19.1	21.9	45.1	43.4	46.8
2010	30.8	30.1	31.4	34.0	33.3	34.7	20.7	20.1	21.3	44.7	44.0	45.4
2011	30.1	27.7	32.6	33.4	31.0	35.9	18.4	16.4	20.6	43.1	40.7	45.7
2012	30.7	28.5	33.0	32.5	30.3	34.8	18.9	17.0	20.9	42.7	40.4	45.0
2013	21.4	20.8	22.0	24.0	23.4	24.6	12.2	11.7	12.6	33.8	33.1	34.5
2014	22.3	20.2	24.6	25.1	22.8	27.5	12.9	11.1	14.8	33.4	30.9	35.9
2015	18.2	17.7	18.8	19.8	19.2	20.3	10.8	10.3	11.2	28.7	28.0	29.4
2016	21.4	19.9	23.1	26.0	24.4	27.7	13.8	12.6	15.2	33.7	32.0	35.5
2017	15.7	15.2	16.2	19.0	18.4	19.6	10.3	9.9	10.7	26.5	25.8	27.2
2018	20.1	19.5	20.8	21.0	20.1	21.5	12.3	11.7	12.8	29.8	29.1	30.6
2019	14.4	13.9	14.9	18.6	18.1	19.2	10.0	9.6	10.4	24.5	23.9	25.1

Table 11: Prevalence and CI (95%) of regular smokers among students between 1998-2019, by year and by country (this updates Table 5 by extending beyond 2015 for all countries, and rotating to use of age rather than school year for England).

Year	All (%)	95% CI		England (%)	95% CI		Scotland (%)	95% CI		Wales (%)	95% CI	
		Low	High		Low	High		Low	High		Low	High
1998	19.0	18.1	20.0	19.5	17.8	21.2	18.7	16.9	20.6	18.9	17.4	20.4
1999	14.7	13.6	15.9	14.7	13.6	15.9	-	-	-	-	-	-
2000	15.4	14.6	16.2	15.9	14.6	17.3	13.1	11.7	14.5	17.2	15.6	18.8
2001	14.4	13.3	15.6	14.4	13.3	15.6	-	-	-	-	-	-
2002	13.8	13.4	14.2	15.2	14.1	16.4	13.2	12.8	13.7	16.2	14.8	17.7
2003	14.4	13.4	15.5	14.4	13.4	15.5	-	-	-	-	-	-
2004	13.5	13.0	14.1	13.6	12.6	14.7	12.4	11.6	13.2	16.1	14.7	17.5
2005	12.9	11.9	14.0	12.9	11.9	14.0	-	-	-	-	-	-
2006	10.2	9.8	10.5	13.0	11.9	14.1	9.4	9.0	9.8	13.1	11.9	14.4
2007	9.6	8.6	10.6	9.6	8.6	10.6	-	-	-	-	-	-
2008	9.2	8.3	9.6	9.9	8.9	10.9	9.0	8.4	9.5	-	-	-
2009	8.9	8.3	9.6	9.5	8.5	10.6	-	-	-	8.4	7.5	9.4
2010	7.8	7.6	8.1	8.6	7.6	9.6	7.8	7.5	8.1	-	-	-
2011	6.9	6.0	7.9	6.9	6.0	7.9	-	-	-	-	-	-
2012	6.7	5.9	7.6	6.7	5.9	7.6	-	-	-	-	-	-
2013	5.1	4.9	5.3	4.9	4.1	5.9	5.1	4.8	5.3	5.4	4.7	6.2
2014	5.1	4.4	6.0	5.1	4.4	6.0	-	-	-	-	-	-
2015	4.5	4.3	4.7	-	-	-	4.1	3.8	4.3	5.5	5.1	6.0
2016	4.2	3.7	4.7	4.2	3.7	4.7	-	-	-	-	-	-
2017	5.1	4.8	5.3	-	-	-	-	-	-	5.1	4.8	5.3
2018	3.9	3.6	4.1	3.1	2.7	3.6	4.1	3.8	4.3	-	-	-
2019	5.1	4.9	5.3	-	-	-	-	-	-	5.1	4.9	5.3

Table 12: Prevalence and CI (95%) of regular smokers among 13-15 year olds between 1998-2019, by gender and school year

Year	Males (%)	95% CI		Females (%)	95% CI		13 year olds (%)	95% CI		15 year olds (%)	95% CI	
		Low	High		Low	High		Low	High		Low	High
1998	15.4	14.2	16.7	22.7	21.2	24.2	10.4	9.3	11.7	24.6	23.3	26.0
1999	13.0	11.6	14.6	16.5	14.8	18.3	5.9	4.9	7.0	23.1	21.2	25.0
2000	12.3	11.3	13.4	18.7	17.4	20.0	8.2	7.3	9.1	22.8	21.5	24.2
2001	12.5	11.1	14.0	16.4	14.8	18.2	6.9	5.8	8.2	21.7	19.9	23.6
2002	11.2	10.7	11.7	16.4	15.8	17.0	8.0	7.5	8.4	20.4	19.7	21.1
2003	11.5	10.2	12.9	17.4	15.8	19.1	6.5	5.5	7.6	21.9	20.2	23.6
2004	10.5	9.7	11.2	16.6	15.8	17.6	6.8	6.2	7.4	20.5	19.5	21.5
2005	10.3	9.0	11.7	15.7	14.1	17.4	5.5	4.5	6.6	20.1	18.4	21.9
2006	8.2	7.7	8.6	12.2	11.7	12.8	4.7	4.3	5.0	15.9	15.3	16.5
2007	7.6	6.4	8.9	11.6	10.1	13.2	3.1	2.3	4.1	15.3	13.7	17.0
2008	8.1	7.5	8.8	10.3	9.6	11.0	4.1	3.6	4.6	14.6	13.8	15.5
2009	7.6	6.7	8.5	10.3	9.3	11.4	3.9	3.3	4.6	14.1	12.9	15.3
2010	7.1	6.7	7.4	8.7	8.3	9.1	3.1	2.9	3.3	12.9	12.4	13.4
2011	6.7	5.4	8.1	7.1	5.8	8.5	2.2	1.5	3.2	10.8	9.3	12.4
2012	6.8	5.7	8.1	6.6	5.4	7.9	1.8	1.2	2.6	11.0	9.5	12.5
2013	4.8	4.5	5.1	5.3	5.0	5.6	1.9	1.7	2.1	8.4	8.0	8.8
2014	4.6	3.6	5.9	5.7	4.5	7.1	1.9	1.3	2.8	8.0	6.7	9.6
2015	4.4	4.1	4.7	4.5	4.2	4.8	1.9	1.7	2.1	7.5	7.1	7.9
2016	3.6	2.9	4.4	4.7	3.9	5.5	1.6	1.2	2.1	6.7	5.8	7.7
2017	4.9	4.6	5.3	5.2	4.9	5.5	2.7	2.5	2.9	8.1	7.7	8.6
2018	4.1	3.7	4.4	3.7	3.4	4.0	1.5	1.4	1.8	6.5	6.1	7.0
2019	4.9	4.6	5.2	5.3	5.0	5.7	2.9	2.7	3.1	7.8	7.4	8.2

Table 13: Prevalence and CI (95%) of reporting trying smoking is “OK” (don’t know = not OK) between 1999-2018, by year and by country, in England and Scotland (this updates Table 10 by extending beyond 2015 for all countries, and rotating to use of age rather than school year for England).

Year	All (%)	95% CI		England (%)	95% CI		Scotland (%)	95% CI	
		Low	High		Low	High		Low	High
1999	69.1	67.7	70.6	69.1	67.7	70.6	-	-	-
2000	-	-	-	-	-	-	-	-	-
2001	69.5	68.0	70.9	69.5	68.0	70.9	-	-	-
2002	-	-	-	-	-	-	-	-	-
2003	62.3	60.8	63.7	62.8	60.8	63.7	-	-	-
2004	54.5	53.0	56.1	54.5	53.0	56.1	-	-	-
2005	57.2	55.7	58.8	57.2	55.7	58.8	-	-	-
2006	53.2	52.6	53.8	49.6	47.9	51.2	53.8	53.1	54.4
2007	51.0	49.3	52.7	51.0	49.3	52.7	-	-	-
2008	47.4	46.5	48.3	47.0	45.3	48.7	47.5	46.6	48.6
2009	50.8	49.1	52.6	50.8	49.1	49.6	-	-	-
2010	45.4	44.9	45.9	47.8	46.0	49.6	45.2	44.7	45.7
2011	46.4	44.5	48.3	46.4	44.5	48.3	-	-	-
2012	42.7	41.0	44.4	42.7	41.0	44.4	-	-	-
2013	33.6	33.1	34.1	42.1	40.1	44.2	33.1	32.5	33.6
2014	34.1	32.2	35.9	34.1	32.3	35.9	-	-	-
2015	26.9	26.3	27.5	-	-	-	27.0	26.5	27.6
2016	33.3	32.1	34.6	33.3	32.1	34.6	-	-	-
2017	-	-	-	-	-	-	-	-	-
2018	30.6	30.1	31.2	30.1	29.9	32.3	30.5	29.9	31.2

Table 14: Prevalence and CI (95%) of young people who think trying smoking is “OK” (don’t know = not OK) between 1999-2018, by gender and school year, in England and Scotland

Year	Males (%)	95% CI		Females (%)	95% CI		13 year olds (%)	95% CI		15 year olds (%)	95% CI	
		Low	High		Low	High		Low	High		Low	High
1999	65.1	63.0	67.2	73.4	71.3	75.4	56.2	53.9	58.5	81.4	79.6	83.1
2000	-	-	-	-	-	-	-	-	-	-	-	-
2001	65.8	63.7	67.9	73.2	71.1	75.2	59.7	57.4	61.9	78.9	77.0	80.6
2002	-	-	-	-	-	-	-	-	-	-	-	-
2003	58.0	55.9	60.1	66.6	64.6	68.6	50.2	48.1	52.4	73.5	71.7	75.4
2004	48.3	46.2	50.5	61.1	58.9	63.2	39.4	37.3	41.7	68.5	66.4	70.4
2005	51.7	49.5	54.0	63.0	60.7	65.1	42.6	40.3	44.9	71.4	69.3	73.4
2006	48.2	47.4	49.1	58.0	57.2	58.9	38.6	37.7	39.4	67.9	67.0	68.7
2007	44.9	42.6	47.3	57.2	54.8	59.6	35.5	33.2	37.9	64.6	62.4	66.8
2008	43.0	41.6	44.0	51.9	50.7	53.1	32.6	31.4	33.7	62.8	61.6	64.0
2009	47.0	44.6	49.4	54.8	52.3	57.2	33.2	30.9	35.7	66.3	64.0	68.5
2010	42.2	41.5	42.9	48.6	47.9	49.3	29.1	28.5	29.8	62.3	61.6	63.0
2011	43.4	40.7	46.1	49.1	46.5	51.7	28.1	25.7	30.7	61.7	59.2	64.1
2012	39.4	37.1	41.8	46.0	43.5	48.4	25.5	23.3	27.8	57.5	48.6	50.1
2013	31.1	30.4	31.8	36.1	35.4	36.9	18.4	17.8	19.0	49.4	48.6	50.1
2014	29.9	27.5	32.4	38.3	35.7	41.0	17.8	15.8	20.0	48.6	46.0	51.2
2015	24.9	24.1	25.7	28.8	28.0	29.6	15.2	14.6	15.9	40.5	39.5	41.4
2016	29.7	27.9	31.5	36.6	34.8	38.4	17.5	16.1	19.0	48.7	46.8	50.6
2017	-	-	-	-	-	-	-	-	-	-	-	-
2018	28.5	27.7	29.3	32.7	31.9	33.5	18.6	18.0	19.2	44.4	43.6	45.3

Table 15: Prevalence and CI (95%) of students in England who think smoking weekly is “OK” (don’t know = not OK) between 2003-2018, by gender and year group. (This adapts Table 11 by extending beyond 2015 for all countries, and rotating to use of age rather than school year for England).

Year	All (%)	95% CI		Males (%)	95% CI		Females (%)	95% CI		13 year olds (%)	95%		15 year olds (%)	95%	
		Low	High		Low	High		Low	High		Low	High		Low	High
2003	35.4	34.0	36.8	32.1	30.1	34.1	38.8	36.7	40.9	22.3	20.5	24.1	47.7	45.6	49.8
2004	27.2	25.8	28.6	23.1	21.8	25.5	31.0	29.0	33.1	14.7	13.1	16.3	38.8	36.7	40.9
2005	29.7	28.2	31.2	26.0	24.1	28.0	33.5	31.3	35.7	18.7	17.0	20.5	40.3	38.1	42.5
2006	25.1	23.7	26.6	22.4	20.5	24.5	27.5	25.5	29.6	13.2	11.6	14.9	35.3	33.2	37.6
2007	26.4	24.9	27.9	23.4	21.4	25.5	29.5	27.3	31.7	14.3	12.6	16.1	37.1	34.9	39.4
2008	20.2	18.8	21.6	17.4	15.6	19.3	23.1	21.1	25.3	11.5	10.0	13.2	27.5	25.5	29.7
2009	24.6	32.2	26.1	24.4	22.3	26.5	24.9	22.8	27.1	12.6	10.9	14.3	35.2	32.9	37.5
2010	22.5	21.0	24.0	21.6	19.6	23.7	23.3	21.2	25.5	12.5	10.8	14.3	31.2	29.0	33.5
2011	20.0	18.5	21.5	20.1	18.0	22.3	19.9	17.8	22.0	10.4	8.8	12.2	28.0	25.7	30.3
2012	19.1	17.8	20.5	18.3	16.4	20.2	20.0	18.1	22.1	11.1	9.6	12.8	26.0	24.0	28.2
2013	17.4	15.9	19.1	17.1	15.0	19.4	17.8	15.6	20.3	7.4	5.8	9.2	25.6	23.2	28.1
2014	13.8	12.5	15.1	12.2	10.5	14.0	15.4	13.5	17.5	7.1	5.7	8.6	19.8	17.8	21.9
2015	-	-	-	-	-	-	-	-	-	-	-	-	-	-	-
2016	12.3	11.4	13.2	9.7	8.6	10.9	14.5	13.2	15.9	6.2	5.3	7.2	18.1	16.7	19.6
2017	-	-	-	-	-	-	-	-	-	-	-	-	-	-	-
2018	11.2	10.4	12.1	10.1	9.0	11.2	12.3	11.1	13.5	6.6	5.7	7.6	16.0	14.7	17.4

Table 16: Prevalence and CI (95%) of ever cannabis use between 1998-2019, by year and by country, among students in England, Scotland and Wales. This updates Table 8 in the report by extending all countries to beyond 2015 and switching to use of age rather than year group throughout for England

Year	All (%)	95% CI		England (%)	95% CI		Scotland (%)	95% CI		Wales (%)	95% CI	
		Low	High		Low	High		Low	High		Low	High
1998	28.0	26.8	29.3	24.0	22.2	25.8	27.0	24.9	29.2	36.4	33.7	39.1
1999	21.2	19.9	22.6	21.2	19.9	22.6	-	-	-	-	-	-
2000	20.9	20.0	21.9	19.8	18.4	21.3	19.8	18.3	21.5	23.5	21.8	25.3
2001	24.8	23.5	26.2	24.8	23.5	26.2	-	-	-	-	-	-
2002	23.5	23.0	24.0	23.5	23.3	24.9	22.9	22.3	23.4	34.2	31.5	37.0
2003	25.4	24.1	26.8	25.4	24.1	26.8	-	-	-	-	-	-
2004	23.5	22.7	24.2	22.8	21.5	24.1	22.9	21.9	23.9	26.0	24.4	27.7
2005	21.6	20.3	22.9	21.6	20.3	22.9	-	-	-	-	-	-
2006	15.2	14.8	15.6	18.7	17.5	20.1	13.9	13.4	14.3	21.9	20.4	23.5
2007	17.4	16.2	18.7	17.4	16.2	18.7	-	-	-	-	-	-
2008	14.0	13.4	14.6	17.5	16.3	18.8	12.7	12.1	13.4	-	-	-
2009	15.0	14.2	15.9	16.6	15.4	17.9	-	-	-	13.5	12.3	14.0
2010	11.3	11.0	11.6	15.4	14.2	16.8	11.0	10.7	11.3	-	-	-
2011	13.3	12.1	14.6	13.3	12.1	14.6	-	-	-	-	-	-
2012	14.2	13.1	15.4	14.2	13.1	15.4	-	-	-	-	-	-
2013	9.8	9.5	10.1	13.5	12.1	15.0	9.5	9.2	9.8	10.4	9.2	11.5
2014	11.4	10.2	12.6	11.4	10.2	12.6	-	-	-	-	-	-
2015	8.7	8.4	9.0	-	-	-	8.9	8.5	9.0	8.4	7.8	8.9
2016	13.0	12.2	14.0	13.0	12.2	14.0	-	-	-	-	-	-
2017	12.0	11.7	12.4	-	-	-	-	-	-	12.0	11.7	12.4
2018	11.2	10.8	11.5	14.3	13.4	15.2	10.3	10.0	10.8	-	-	-
2019	12.3	12.0	12.6	-	-	-	-	-	-	12.3	12.0	12.6

Table 17: Prevalence and CI (95%) of ever cannabis use between 1998-2019, by gender and school year, among students in England, Scotland and Wales

Year	Males (%)	95% CI		Females (%)	95% CI		13 year olds (%)	95% CI		15 year olds (%)	95% CI	
		Low	High		Low	High		Low	High		Low	High
1998	29.9	28.2	31.7	26.1	24.4	27.8	8.8	7.3	10.6	33.7	32.3	35.2
1999	23.0	21.2	24.9	19.3	17.5	21.2	8.8	7.6	10.2	33.0	30.9	35.1
2000	21.5	20.2	22.8	20.4	19.1	21.7	10.1	9.2	11.1	31.9	30.4	33.4
2001	27.1	25.2	29.1	22.5	20.6	24.4	12.8	11.3	14.4	36.4	34.2	38.5
2002	25.5	24.8	26.2	21.4	20.7	22.1	11.3	10.8	11.9	35.8	35.0	36.6
2003	27.6	25.7	29.5	23.2	21.4	25.1	11.3	10.0	12.8	38.4	36.4	40.5
2004	25.0	24.0	26.0	22.0	21.0	23.0	11.9	11.2	12.7	35.1	34.0	36.3
2005	22.5	20.7	24.4	20.6	18.8	22.4	8.6	7.4	10.0	34.1	32.0	36.2
2006	16.3	15.7	16.9	14.1	13.6	14.7	6.3	5.9	6.7	24.5	23.8	25.2
2007	17.9	16.1	19.8	16.9	15.1	18.8	6.0	4.9	7.3	27.5	25.5	29.6
2008	15.4	14.6	16.3	12.5	11.7	13.3	5.3	4.8	5.8	23.2	22.2	24.3
2009	15.8	14.6	17.0	14.2	13.1	15.5	5.7	5.0	6.6	24.4	23.0	25.9
2010	13.1	12.6	13.5	9.5	9.1	9.9	3.7	3.4	3.9	19.5	18.9	20.0
2011	15.8	13.9	17.8	11.0	9.5	12.7	4.3	3.3	5.5	20.9	19.0	23.0
2012	15.9	14.2	17.7	12.5	11.0	14.2	4.7	3.7	5.9	22.4	20.5	24.4
2013	10.9	10.4	11.3	8.7	8.3	9.1	3.2	3.0	3.5	16.7	16.1	17.2
2014	13.0	11.3	14.8	9.7	8.2	11.4	3.2	2.3	4.3	18.7	16.7	20.7
2015	10.1	9.6	10.5	7.4	7.0	7.8	3.1	2.8	3.3	15.3	14.7	15.9
2016	13.9	12.5	15.2	12.3	11.1	13.6	4.9	4.1	5.8	21.1	19.6	22.7
2017	12.8	12.3	13.3	11.2	10.8	11.7	5.2	5.0	5.5	20.9	20.2	21.5
2018	13.0	12.4	13.5	9.3	8.9	9.9	4.3	4.0	4.7	19.0	18.3	19.7
2019	12.8	12.4	13.3	11.7	11.3	12.2	5.6	5.3	5.9	20.4	19.9	21.0

Table 18: Prevalence and CI (95%) of ever alcohol use between 1998-2019, by year and by country, in England, Scotland and Wales. This updates Table 8 in the report by extending all countries to beyond 2015 and switching to use of age rather than year group throughout for England

Year	All (%)	95% CI		England ^a (%)	95% CI		Scotland (%)	95% CI		Wales (%)	95% CI	
		Low	High		Low	High		Low	High		Low	High
1998	78.5	77.2	79.8	80.4	78.7	82.1	76.2	74.1	78.2	-	-	-
1999	76.6	75.2	77.9	76.6	75.2	77.9	-	-	-	-	-	-
2000	73.3	72.1	74.5	74.8	73.2	76.4	71.3	69.4	73.1	-	-	-
2001	77.2	75.8	78.5	77.2	75.8	78.5	-	-	-	-	-	-
2002	79.3	78.8	79.8	75.7	74.3	77.0	78.5	77.9	79.0	93.2	92.1	94.2
2003	75.9	74.6	77.1	75.9	74.6	77.1	-	-	-	-	-	-
2004	78.1	77.4	78.8	73.8	72.4	75.2	77.7	76.7	78.7	85.3	83.9	86.6
2005	72.3	70.8	73.7	72.3	70.8	73.7	-	-	-	-	-	-
2006	72.0	71.5	72.5	69.5	68.0	71.0	71.2	70.6	71.8	81.9	80.4	83.3
2007	68.4	66.8	70.0	68.4	66.8	70.0	-	-	-	-	-	-
2008	66.6	66.0	67.4	67.9	66.2	69.4	66.2	65.3	67.1	-	-	-
2009	69.3	68.2	70.4	65.5	63.9	67.1	-	-	-	72.9	71.4	74.3
2010	60.0	59.5	60.5	60.6	58.8	62.3	60.0	59.5	60.5	-	-	-
2011	59.9	58.1	61.7	59.9	58.1	61.7	-	-	-	-	-	-
2012	57.4	55.7	59.1	57.4	55.7	59.1	-	-	-	-	-	-
2013	50.4	49.9	50.9	53.2	51.1	55.2	49.5	49.0	50.1	57.8	56.1	59.5
2014	50.6	48.7	52.5	50.6	48.7	52.5	-	-	-	-	-	-
2015	47.6	47.1	48.1	-	-	-	44.7	44.0	45.3	54.3	53.3	55.2
2016	59.6	58.3	60.9	59.6	58.3	60.9	-	-	-	-	-	-
2017	54.7	54.2	55.3	-	-	-	-	-	-	54.7	54.2	55.3
2018	53.0	52.4	53.6	54.7	53.4	56.0	52.5	51.8	53.2	-	-	-
2019	53.2	52.7	53.7	-	-	-	-	-	-	53.2	52.7	53.7

^a Due to a change in question wording from 2016, data for England are no longer comparable to previous data-points

Table 19: Prevalence and CI (95%) of ever alcohol use between 1998-2019, by gender and year group, among students in England, Scotland and Wales

Year	Males (%)	95% CI		Females (%)	95% CI		13 year olds (%)	95% CI		15 year olds (%)	95% CI	
		Low	High		Low	High		Low	High		Low	High
1998	79.9	78.0	81.6	77.1	75.2	79.0	59.7	56.8	62.5	86.7	85.4	87.9
1999	77.7	75.3	79.1	75.9	73.9	77.8	63.8	61.5	65.9	88.8	87.3	90.1
2000	73.2	71.5	74.9	73.3	71.6	75.0	60.2	58.3	62.1	86.0	84.6	87.3
2001	76.9	74.9	78.7	77.5	75.5	79.3	66.4	64.2	68.5	87.4	85.9	88.9
2002	78.5	77.8	79.1	80.1	79.5	80.8	70.5	70.0	71.2	89.2	88.7	89.7
2003	75.9	74.1	77.3	75.9	74.0	77.7	63.8	61.7	65.8	87.3	85.9	88.7
2004	76.3	75.3	77.3	80.0	79.0	80.9	68.4	67.3	69.5	88.1	87.3	88.9
2005	70.2	68.1	72.2	74.4	72.4	76.4	58.5	56.2	60.7	85.5	83.9	87.0
2006	71.0	70.2	71.7	73.0	72.3	73.7	59.2	58.4	60.0	85.3	84.7	85.8
2007	68.4	66.2	70.6	68.4	66.2	70.7	53.9	51.4	56.4	81.4	79.5	83.1
2008	66.4	65.3	67.5	66.8	65.7	67.9	52.3	51.1	53.5	81.9	80.9	82.8
2009	70.0	68.5	71.5	68.5	66.9	70.1	55.8	54.2	57.5	82.9	81.6	84.2
2010	59.8	59.1	60.4	60.2	59.6	60.9	43.7	43.0	44.4	77.3	76.7	77.9
2011	60.5	57.8	63.1	59.4	56.9	61.9	41.6	38.9	44.3	75.3	73.1	77.4
2012	57.0	54.6	59.4	57.8	55.4	60.2	37.6	35.2	40.1	74.6	72.5	76.6
2013	49.9	49.2	50.6	51.0	50.3	51.7	32.2	31.5	32.8	69.8	69.1	70.4
2014	50.0	47.4	52.6	51.2	48.5	53.9	28.5	26.0	31.0	70.3	67.9	72.6
2015	47.2	46.5	48.0	47.9	47.2	48.7	31.0	30.4	31.7	66.9	66.2	67.6
2016	57.5	55.5	59.4	61.5	59.7	63.3	42.7	40.9	44.6	76.1	74.5	77.7
2017	53.6	52.9	54.3	55.8	55.1	56.6	42.0	41.3	42.7	71.2	70.5	72.0
2018	52.7	51.9	53.5	53.3	52.4	54.1	37.2	36.4	38.0	70.7	70.0	71.5
2019	51.8	51.1	52.5	54.5	53.8	55.2	39.4	38.9	40.1	69.7	69.1	70.4

Predicted probability graphs from models for segmented regression analyses of e-cigarette use and smoking over time

Figure 1. Predicted probabilities of ever e-cigarette use by month from baseline, prior to and after the TPD intervention point (May 2016), from segmented regression analyses of data from Wales between November 2013 and December 2019 (N=91,687). Model includes time, level, post-slope, gender and year group.

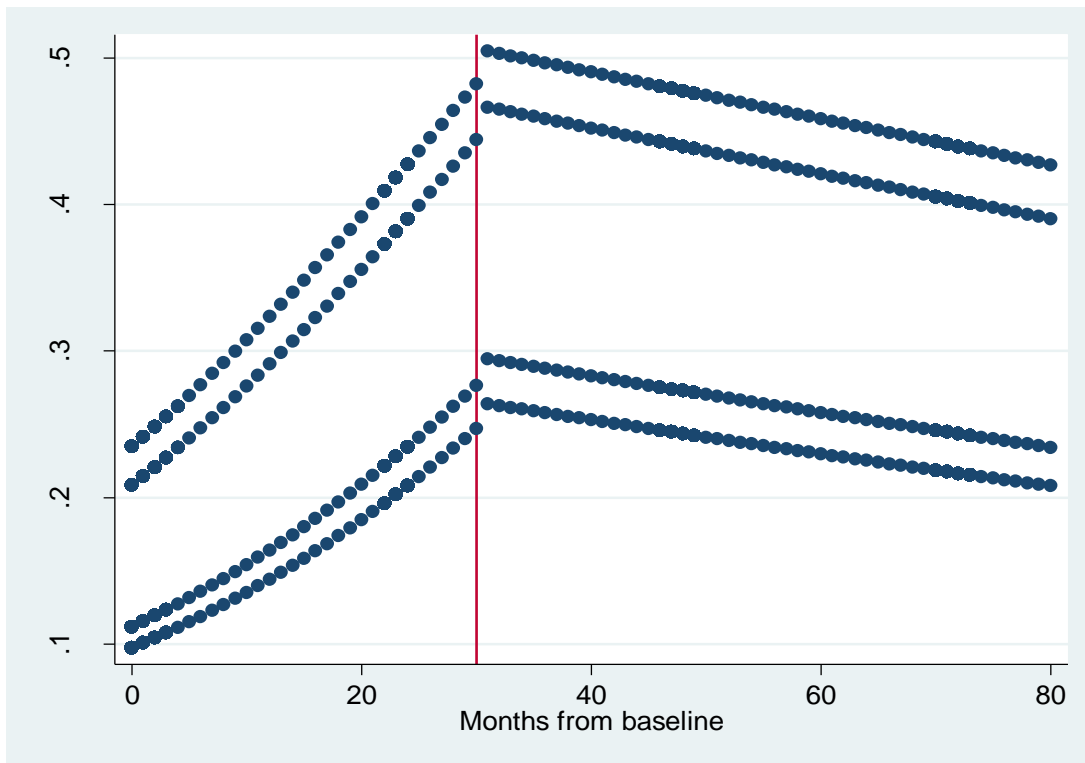
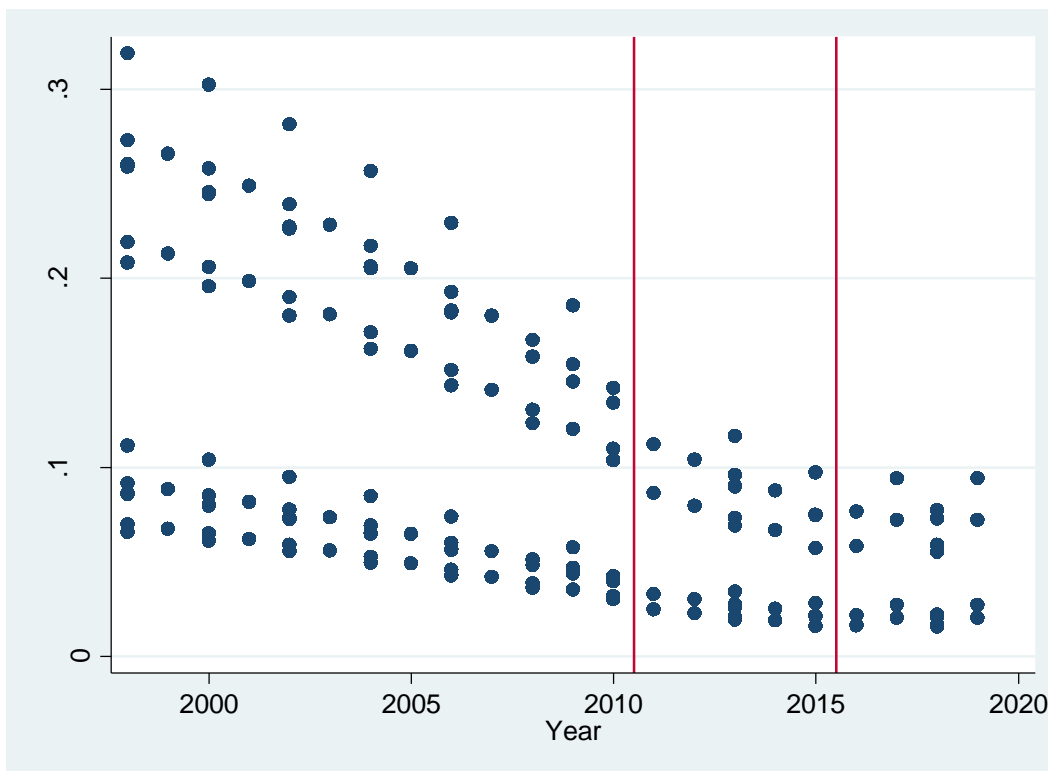
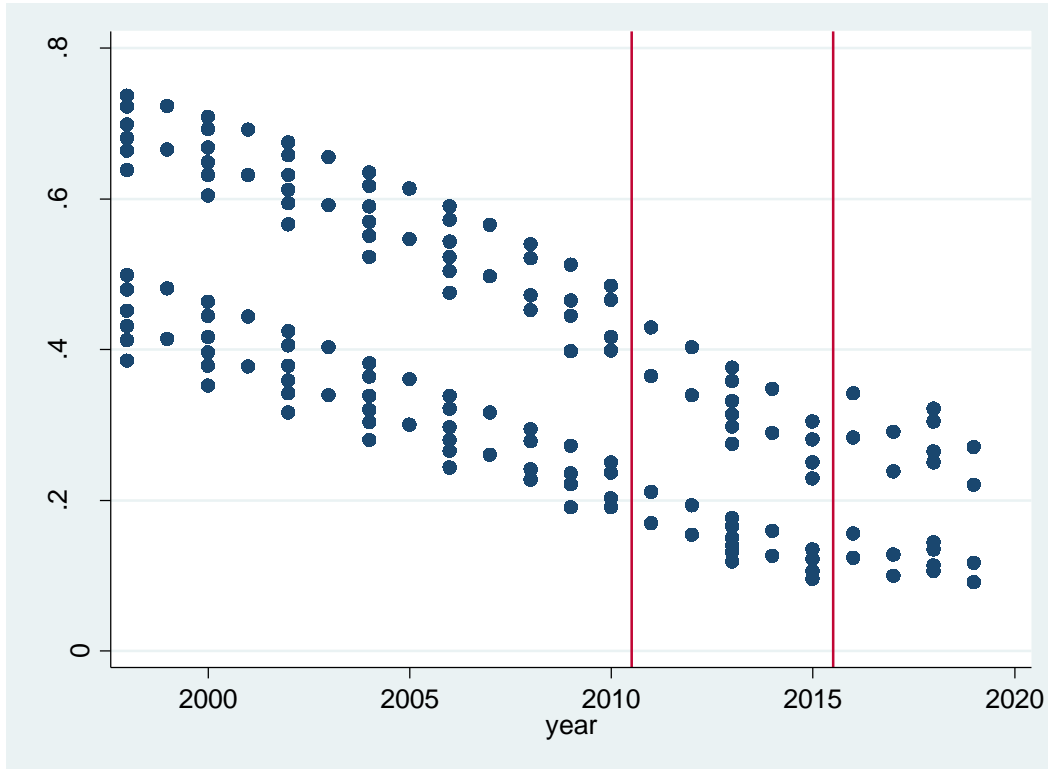


Figure 2. Predicted probability of ever and regular smoking by year from 1998 to 2019 among 13 to 15 year olds in England, Scotland and Wales from segmented regression analyses with “intervention” periods 2011 to 2015 (emergence of e-cigarettes as a popular cessation tool) and introduced of a suite of tobacco and e-cigarette regulations, including TPD and Plain Packaging). Model includes terms for time, level, post-slope, gender, year group and country.



1. Hallingberg B, Maynard OM, Bauld L, Brown R, Gray L, Lowthian E, et al. Have e-cigarettes renormalised or displaced youth smoking? Results of a segmented regression analysis of repeated cross sectional survey data in England, Scotland and Wales. *Tobacco control*. 2020;29(2):207-16.
2. Moore G, Brown R, Page N, Hallingberg B, Maynard O, McKell J, et al. Young people's use of e-cigarettes in Wales, England and Scotland before and after introduction of EU Tobacco Products Directive regulations: a mixed-method natural experimental evaluation. *International Journal of Drug Policy*. 2020;85:102795.