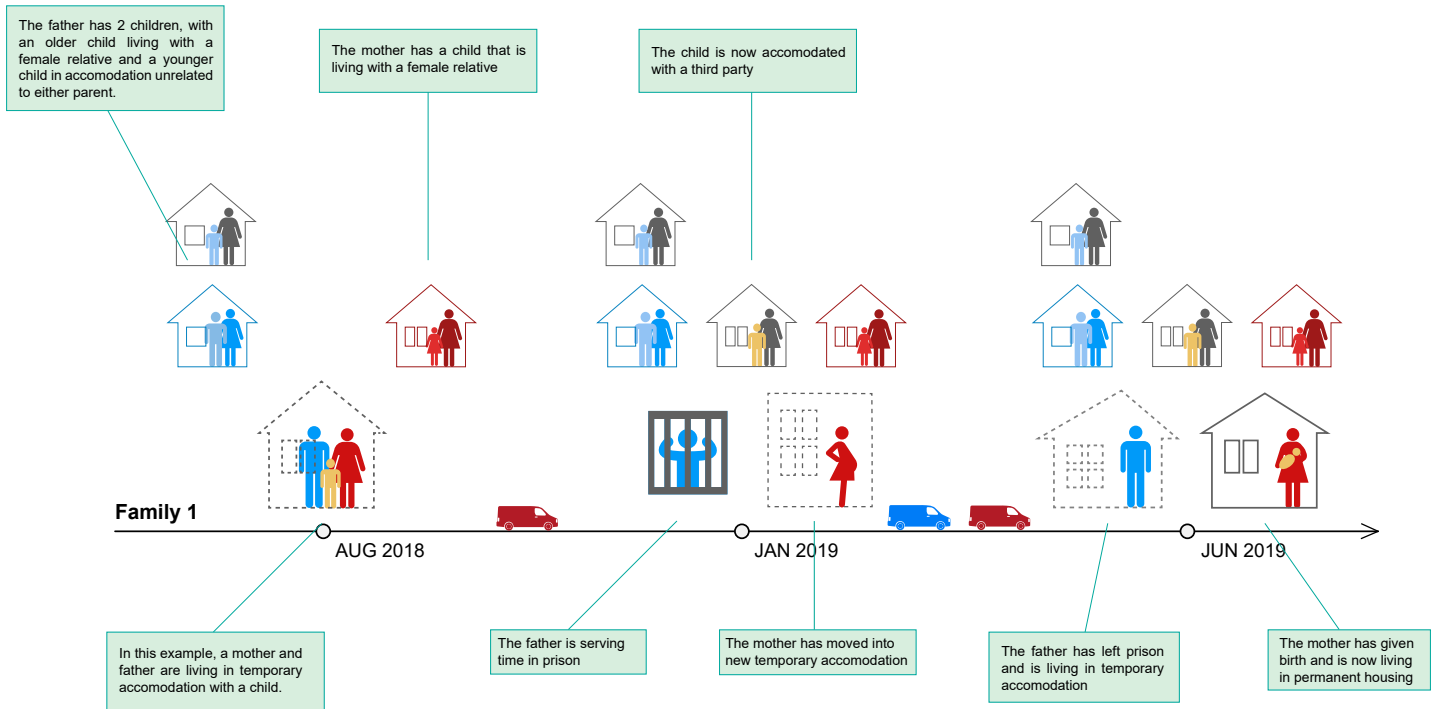


Infographics of situations of families eligible for study

Example



Key

	Father		Child		Parent is pregnant		Anything in blue relates to the paternal side of the family		Anything in gold relates to both parents		Child Adult Senior		Permanent Housing		A van indicates a change of accommodation between timepoints
	Mother		Baby		Parent in prison		Anything in red relates to the maternal side of the family		Anything in grey relates to a third party. Such as a foster home or care	Darker shades of colour denote older persons, while brighter colours represent younger.			Temporary Housing		

