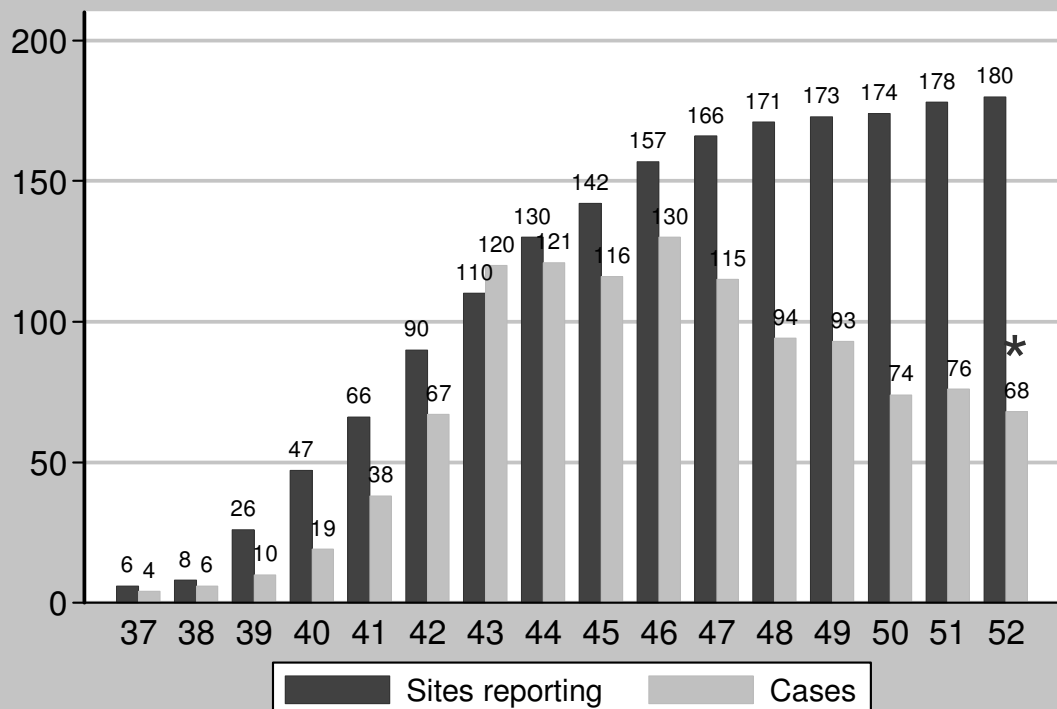


Key messages from SwiFT (to week 52)

- Number of new cases continues to decline gradually
- H1N1 cases - confirmed (ever) 38%, suspected 18%, tested negative 44%
- H1N1 cases aged 25-64 years predominate
- 16% female confirmed H1N1 cases reported currently/recently pregnant
6% female suspected H1N1 cases reported currently/recently pregnant
- 26% confirmed H1N1 cases reported obese/morbidly obese
15% suspected H1N1 cases reported obese/morbidly obese
- 41% confirmed H1N1 cases reported no chronic organ dysfunction
48% suspected H1N1 cases reported no chronic organ dysfunction
- 31/1083 (2.9%) H1N1 cases reported managed in extended critical care area
- 18% confirmed H1N1 died by end of critical care (19% cases not yet reported)
- Confirmed H1N1 median 9 days of critical care
- 77% confirmed H1N1 cases reported to receive advanced respiratory support for median 9 days
- 21% confirmed H1N1 cases reported to receive renal support
- Risk factors for mortality among confirmed H1N1 cases: increasing age (and possible increased risk at youngest age); severe chronic organ dysfunction; presentation with exacerbation of airflow limitation associated with decreased risk
- Factors associated with increased duration of critical care among confirmed H1N1 cases: middle age (decreased duration at younger and older ages relative to age 45); overweight; confirmed H1N1 on initial assessment; receipt of antivirals on initial assessment; presentation with viral pneumonitis/ ARDS; moderate or severe chronic organ dysfunction; confusion; raised urea

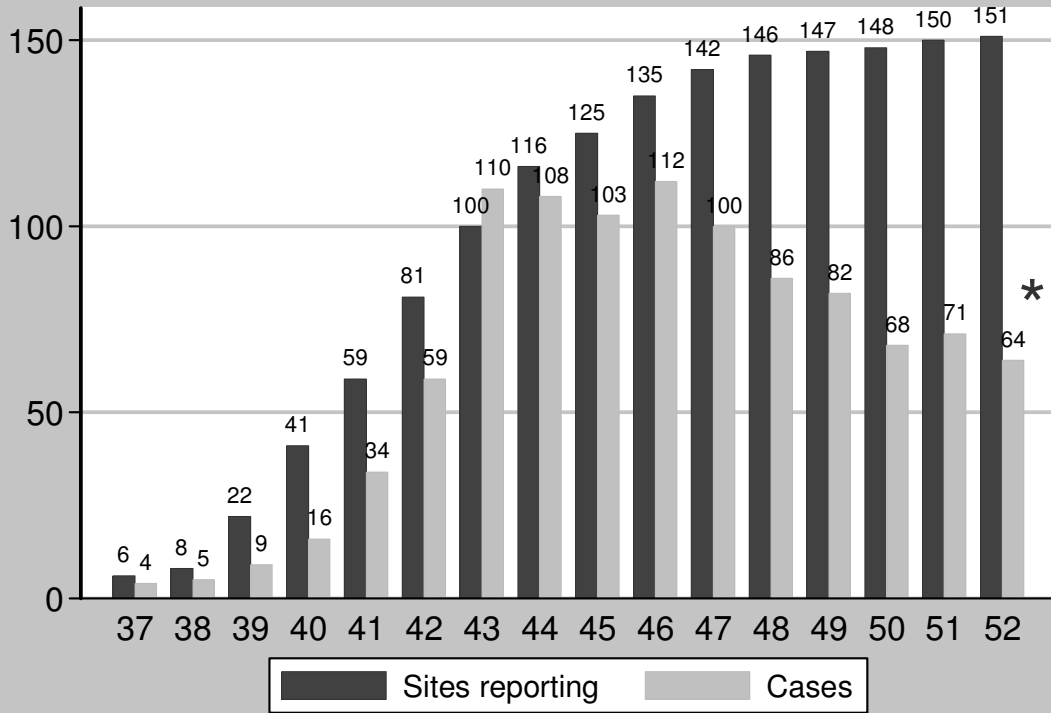
SwiFT data collection (all sites)



© ICNARC 2009

* Week 52 – not complete

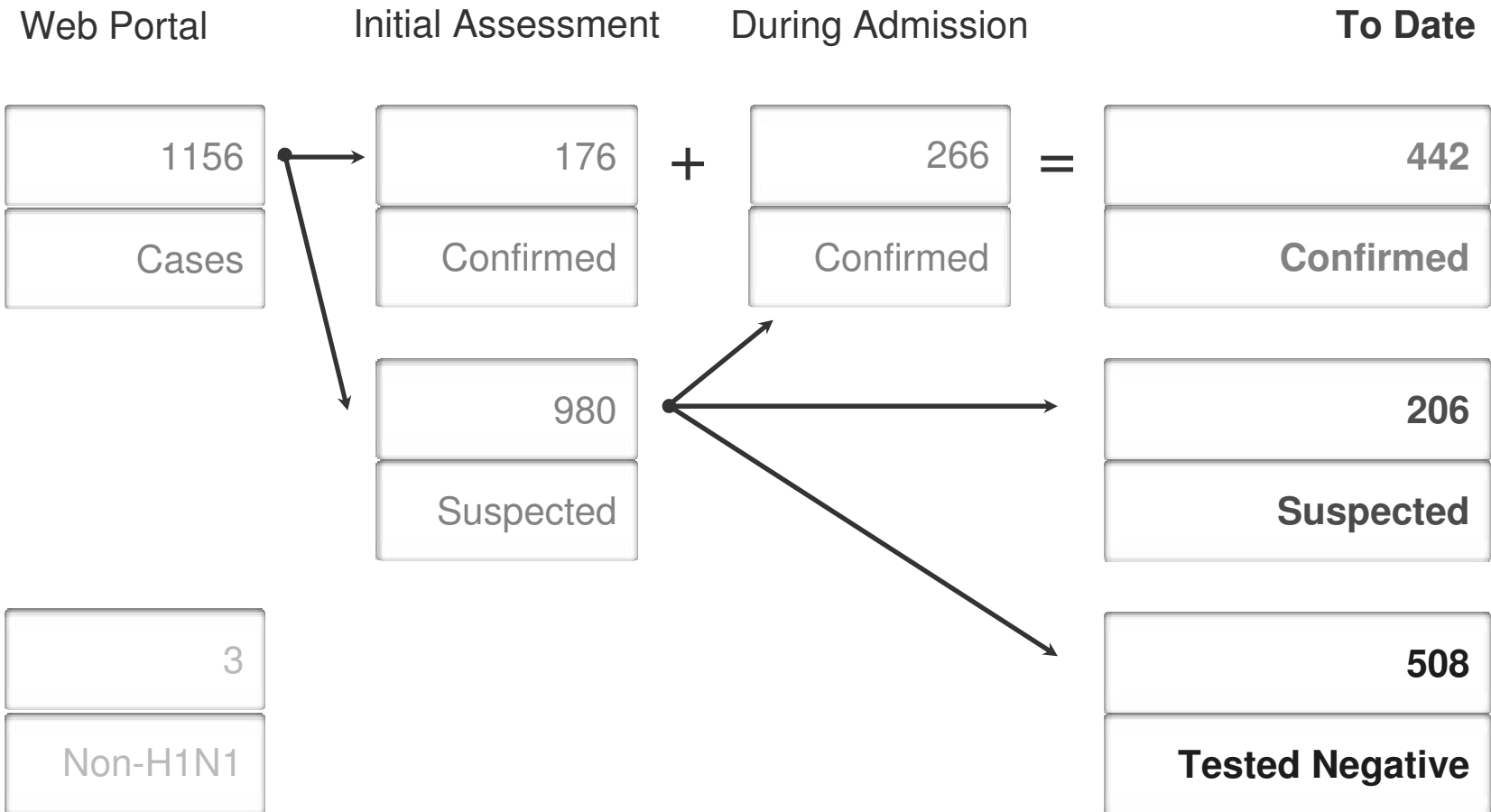
SwiFT data collection (England)



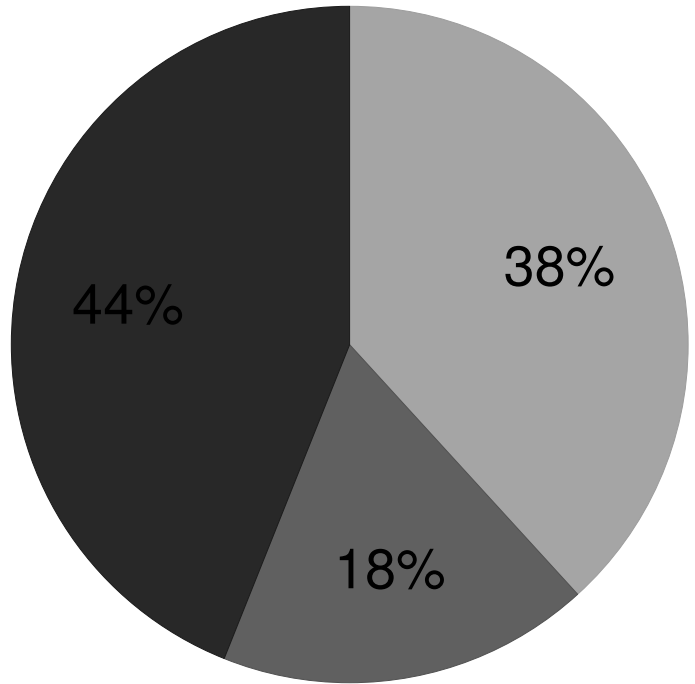
© ICNARC 2009

* Week 52 - not complete

SwiFT H1N1 Case Flow

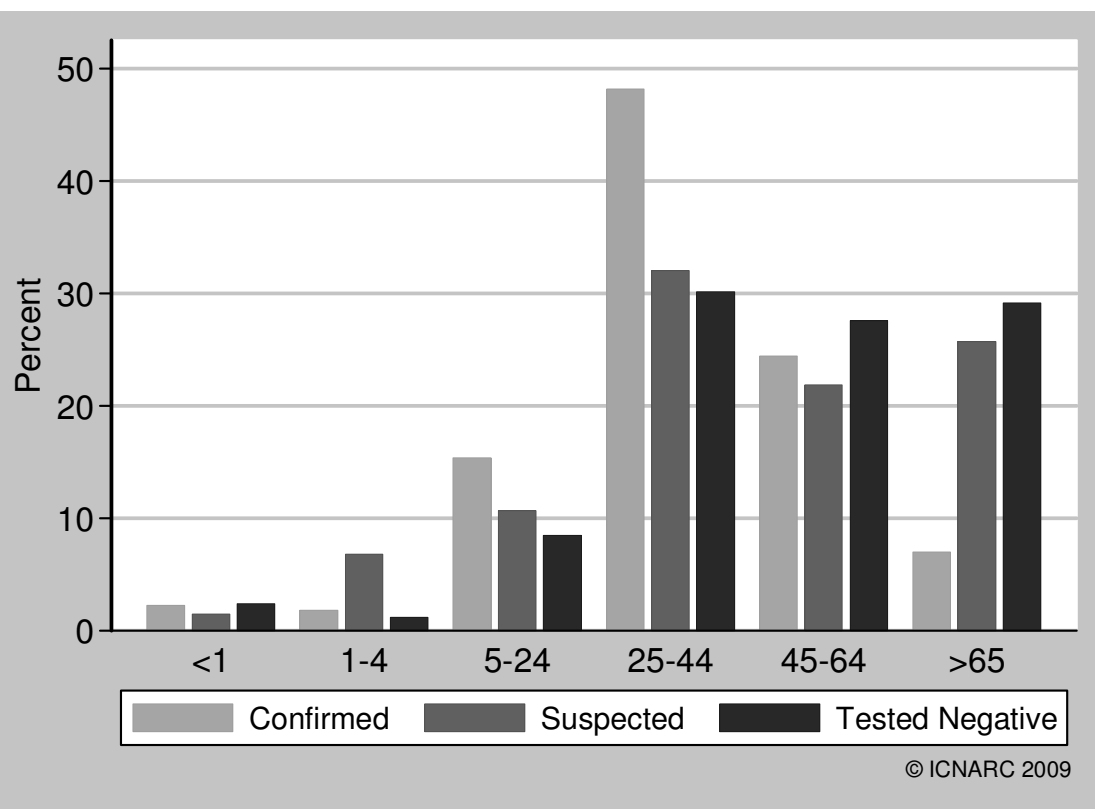


H1N1 status

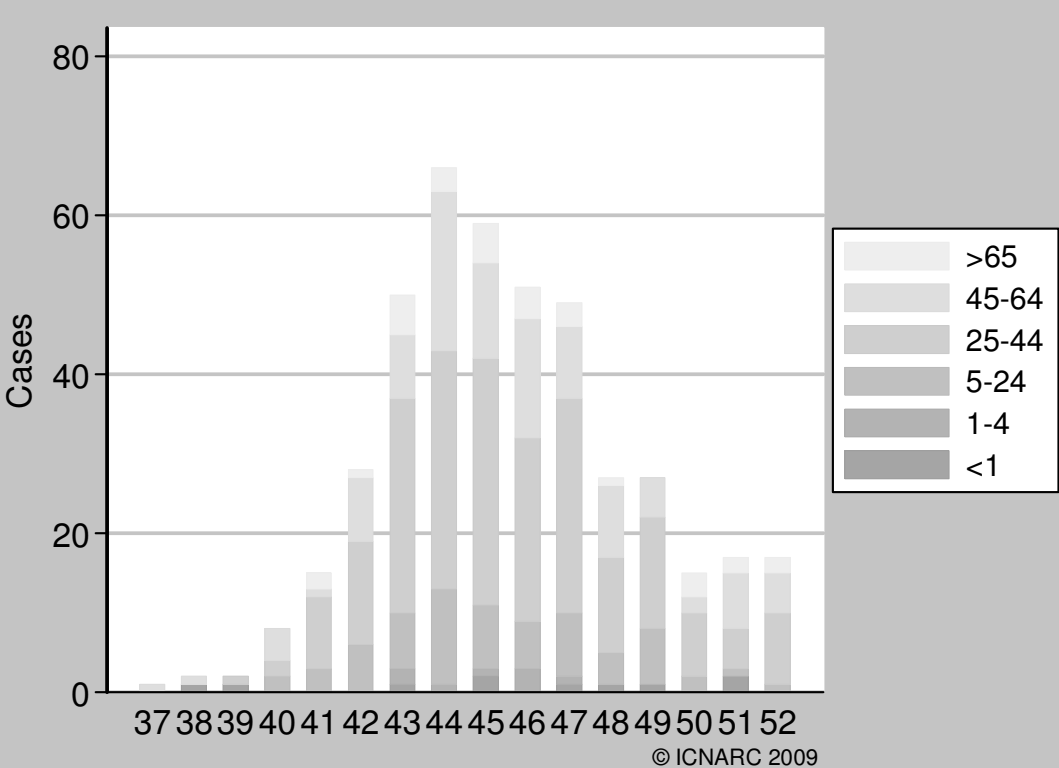


© ICNARC 2009

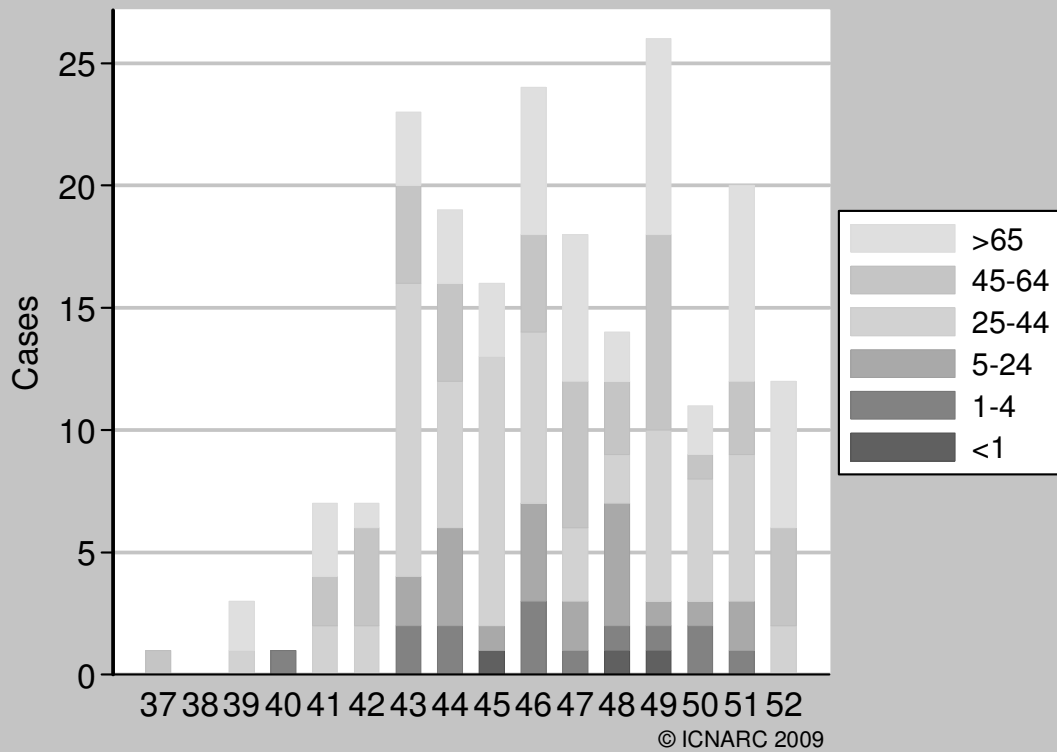
Age distribution (years) by H1N1 Status



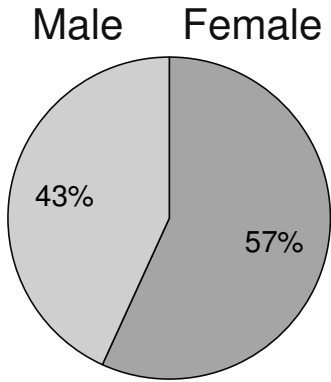
Confirmed H1N1 age group



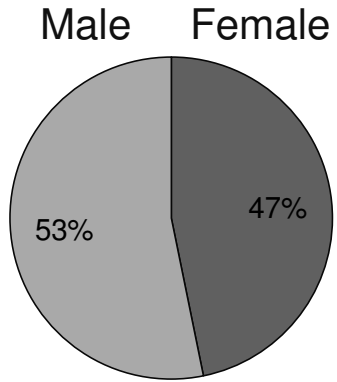
Suspected H1N1 age group



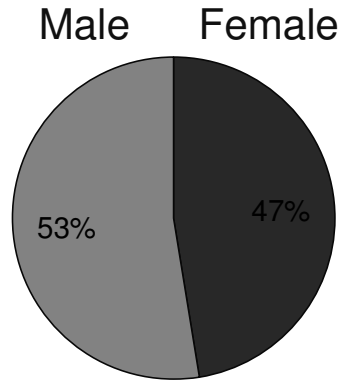
Male / Female by H1N1 status



Confirmed



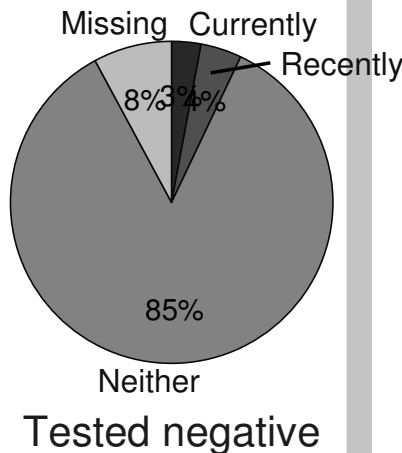
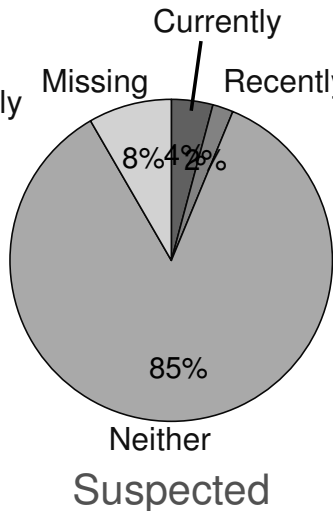
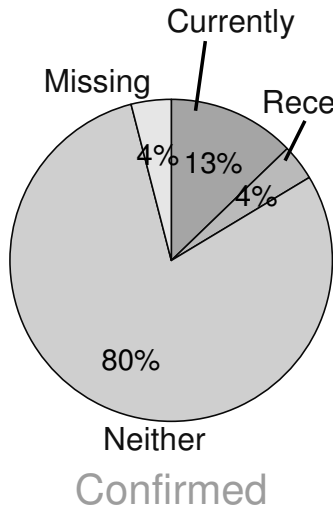
Suspected



Tested negative

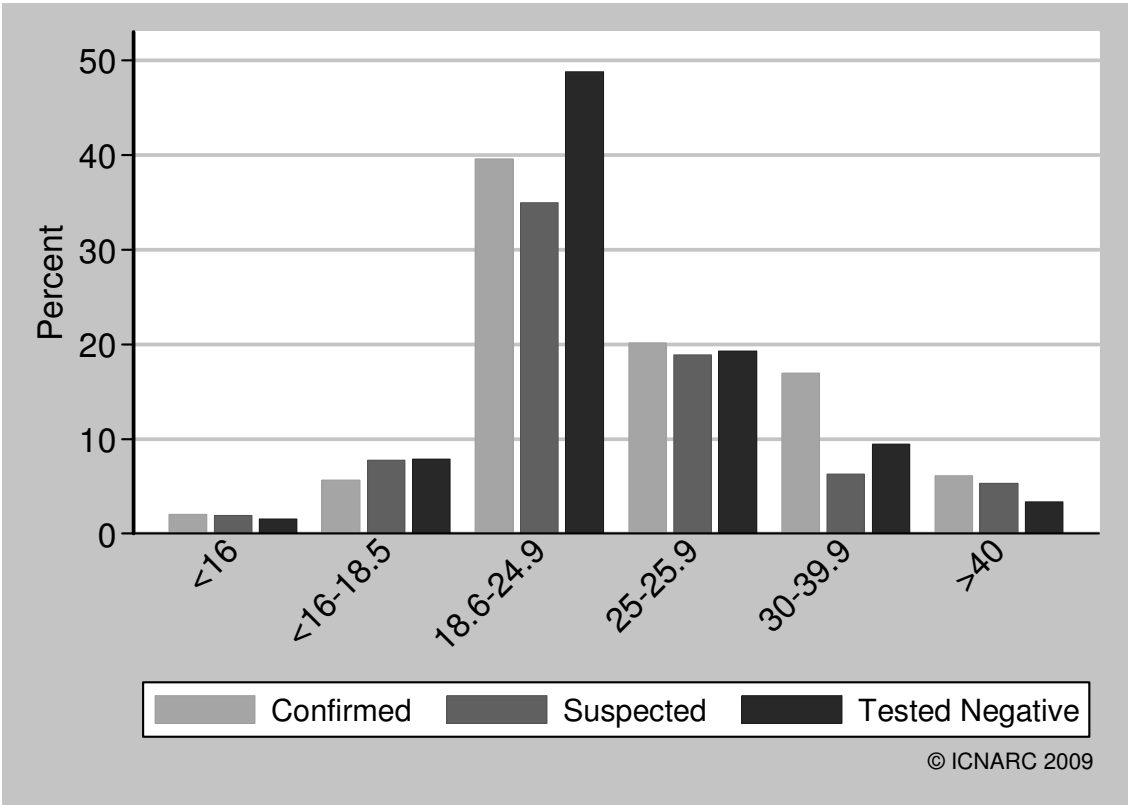
© ICNARC 2009

Pregnancy by H1N1 status

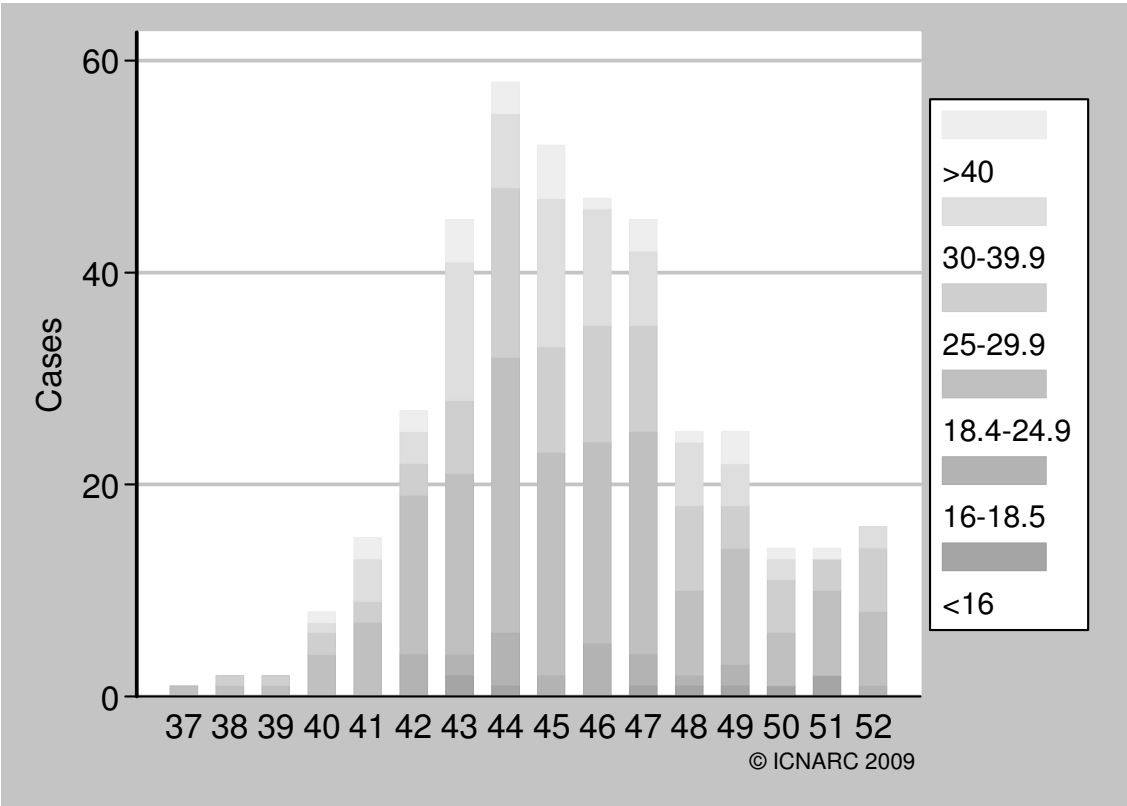


© ICNARC 2009

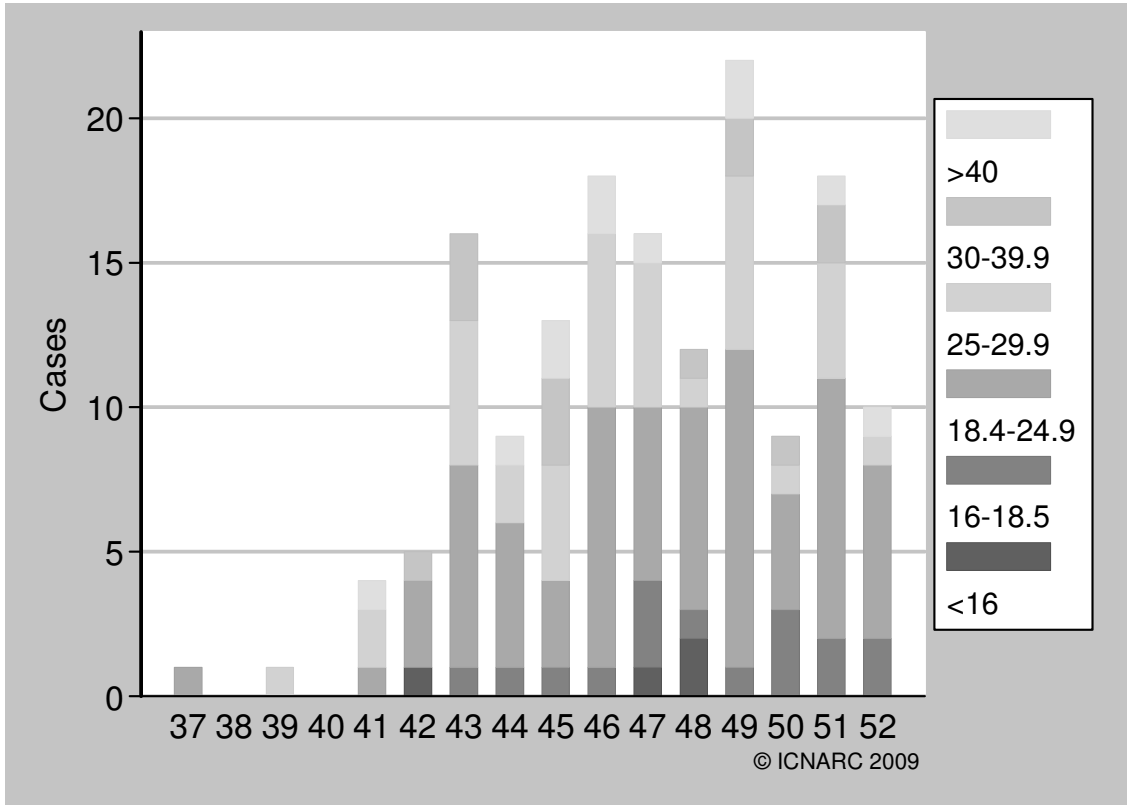
Reported body composition (BMI) by H1N1 Status



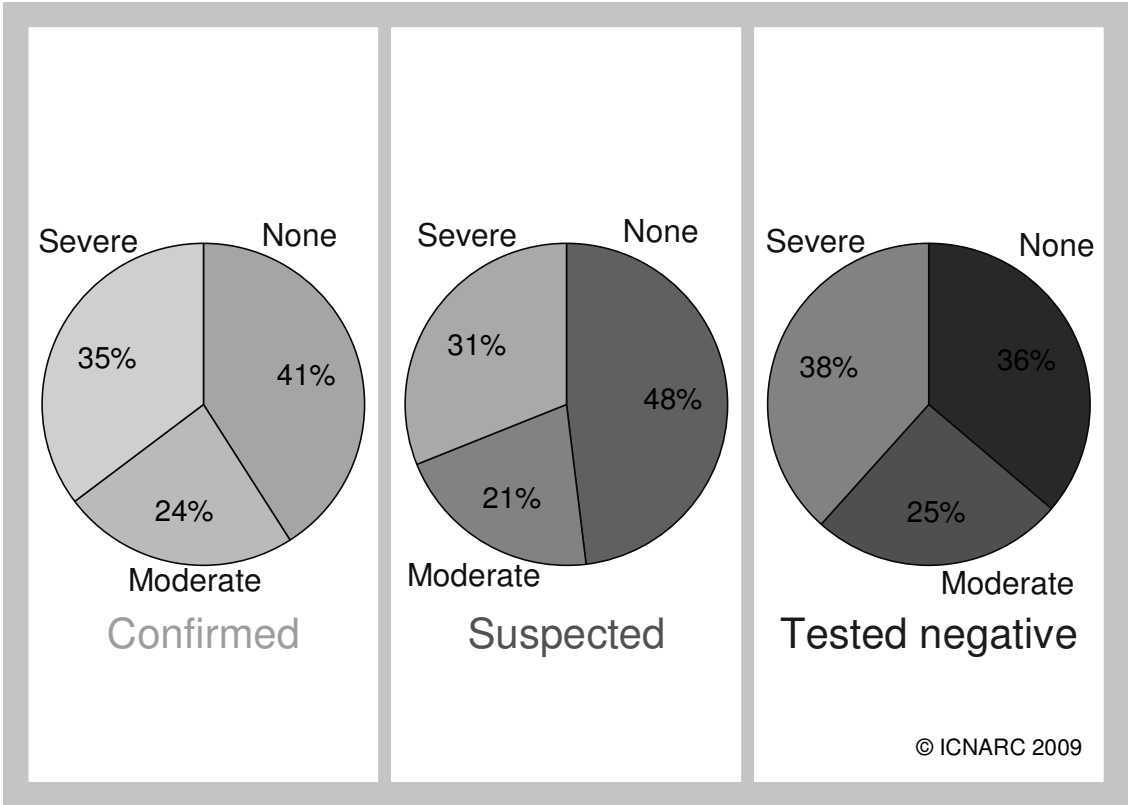
Confirmed H1N1 body composition (BMI)



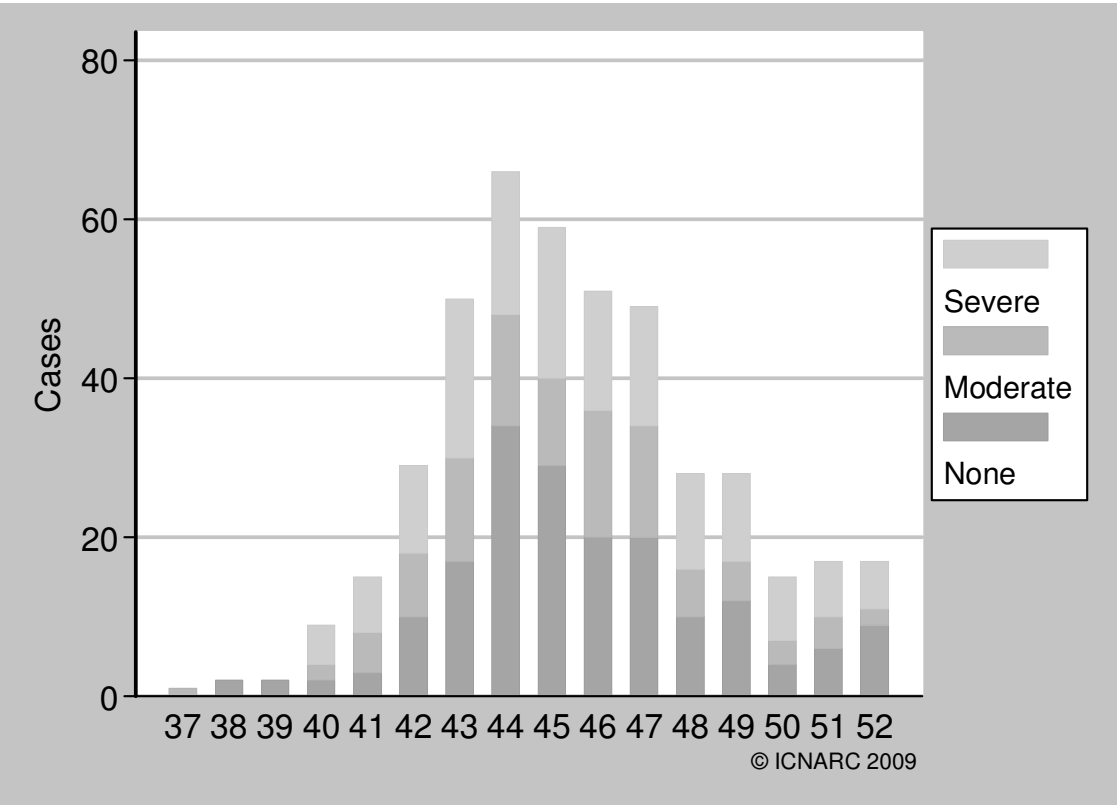
Suspected H1N1 body composition (BMI)



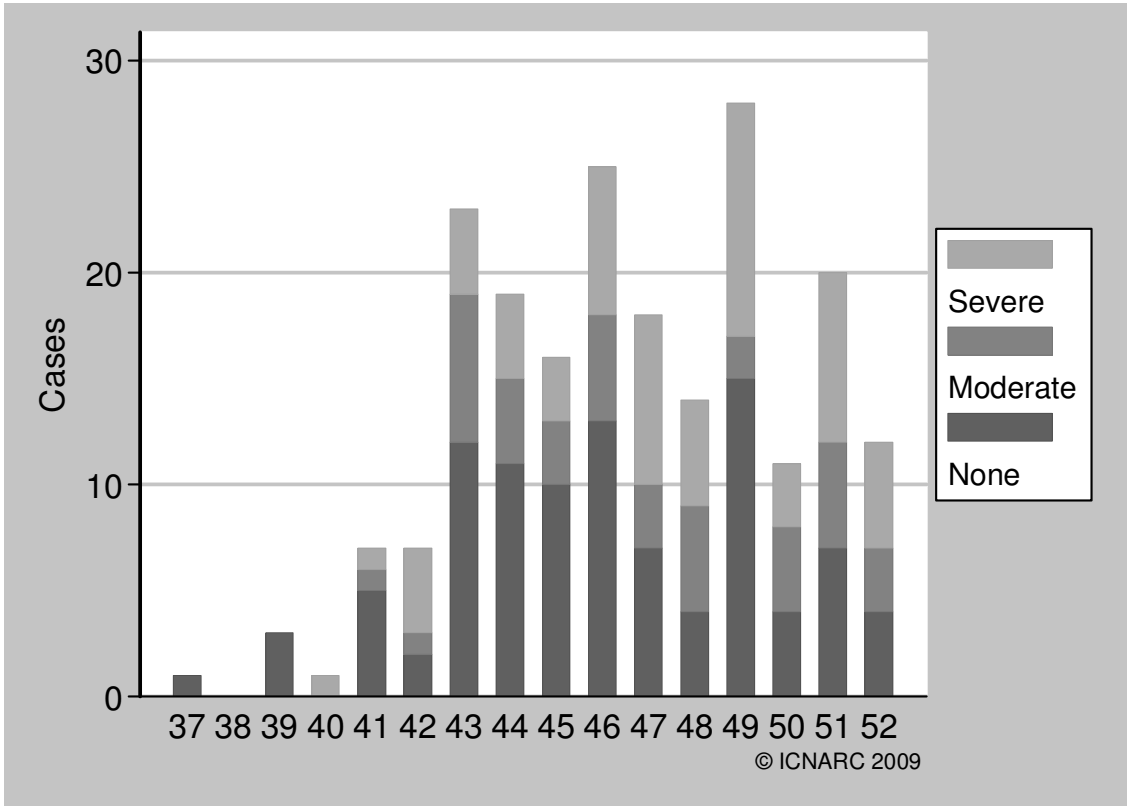
Reported chronic organ dysfunction by H1N1 status



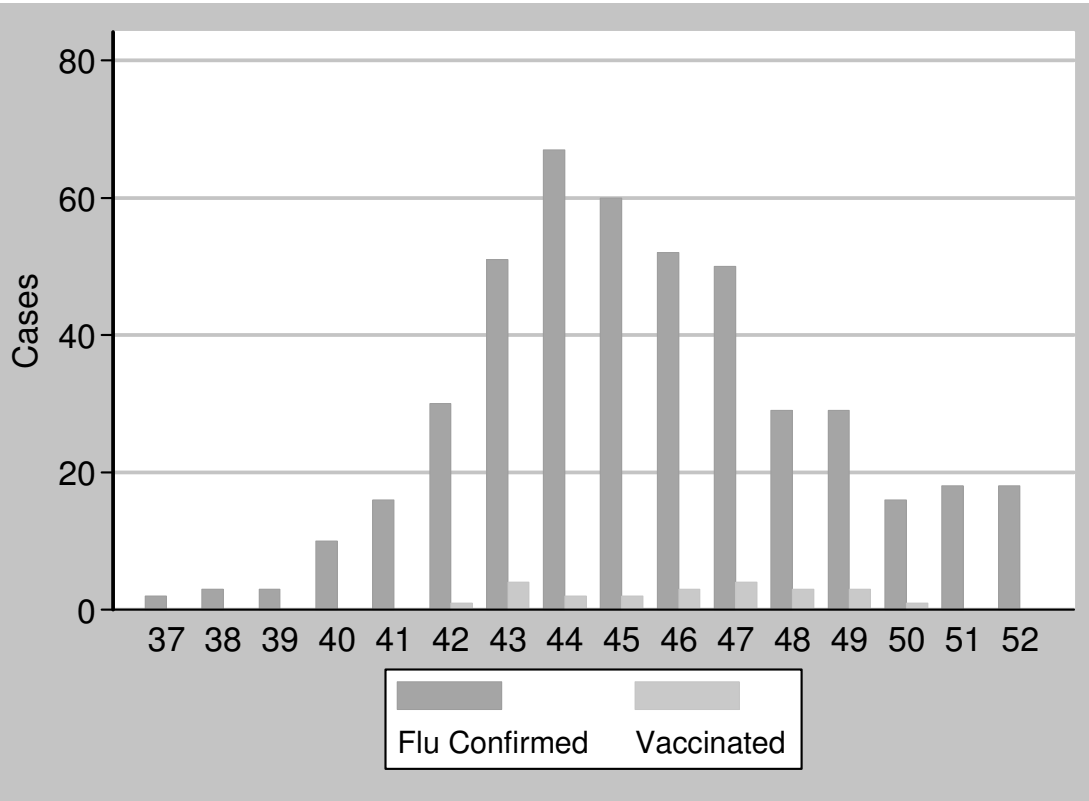
Confirmed H1N1 chronic organ dysfunction



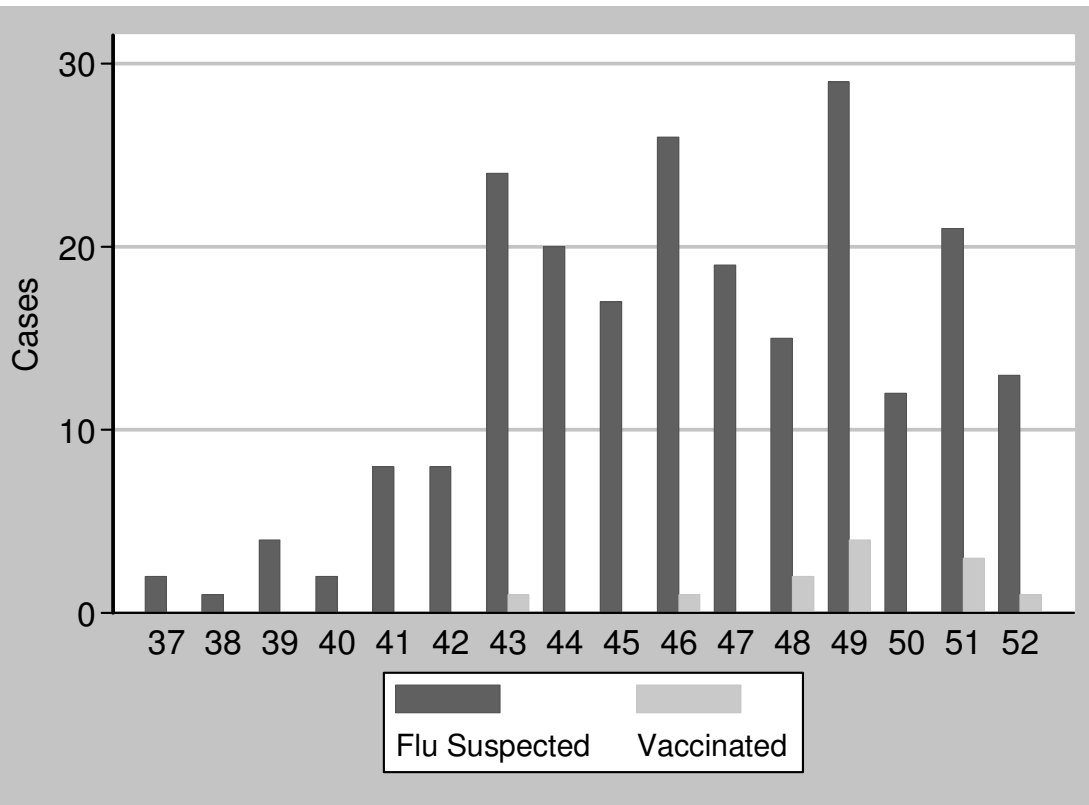
Suspected H1N1 chronic organ dysfunction



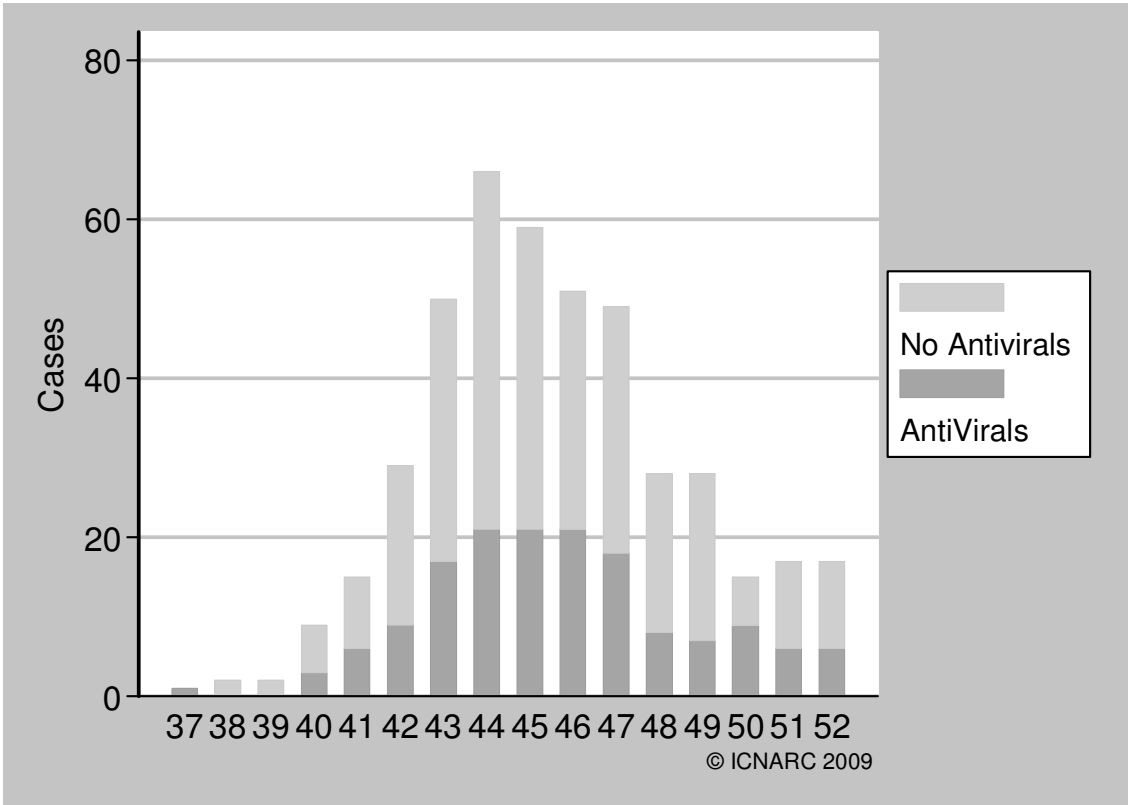
Confirmed H1N1 vaccination status



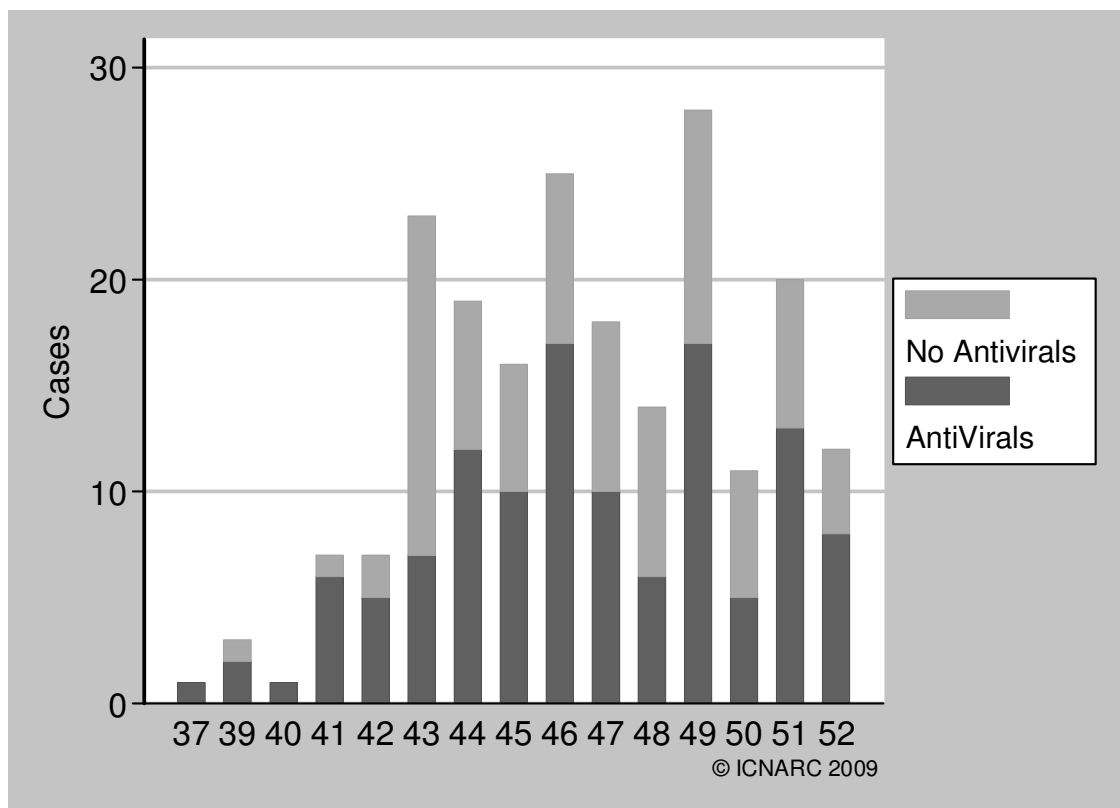
Suspected H1N1 vaccination status



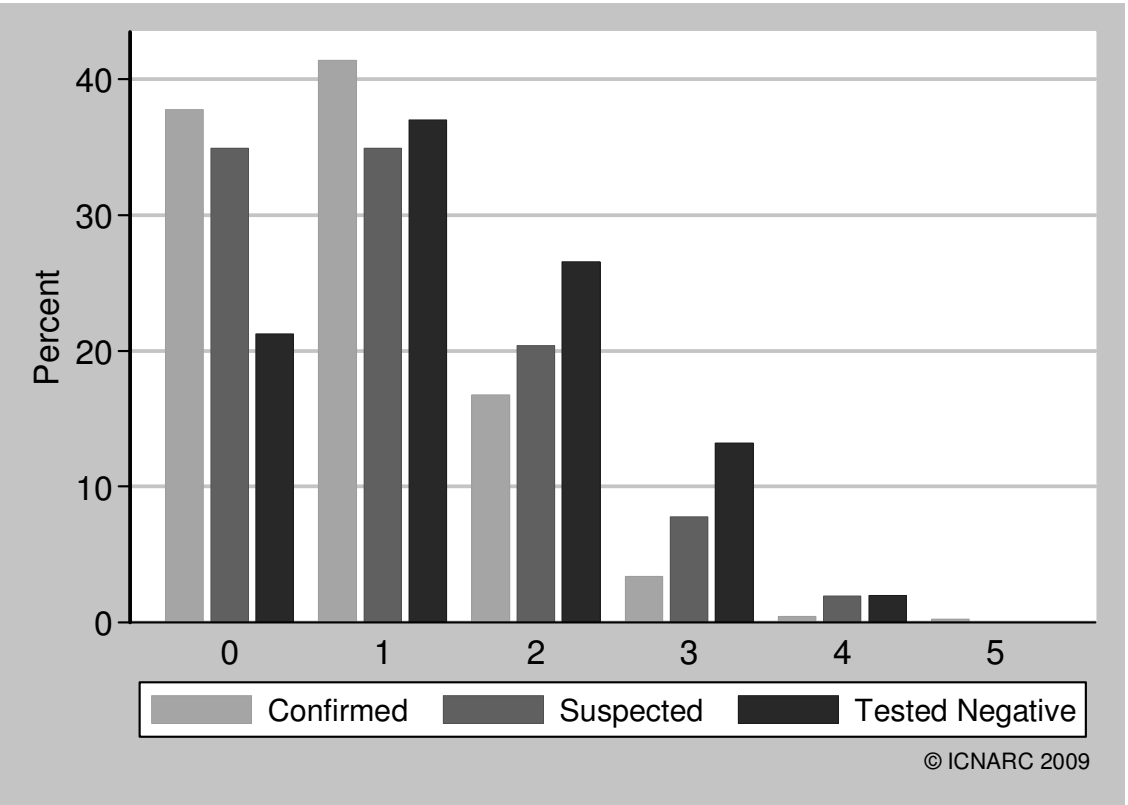
Confirmed H1N1 antivirals on assessment



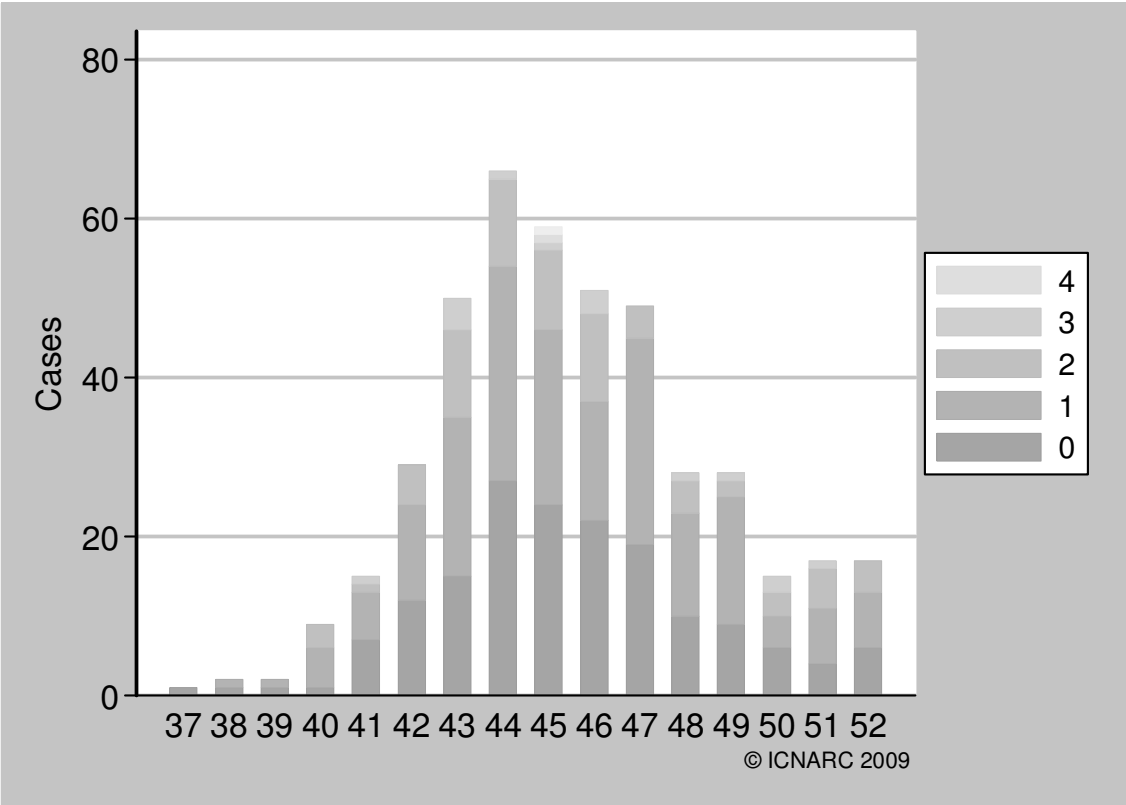
Suspected H1N1 antivirals on assessment



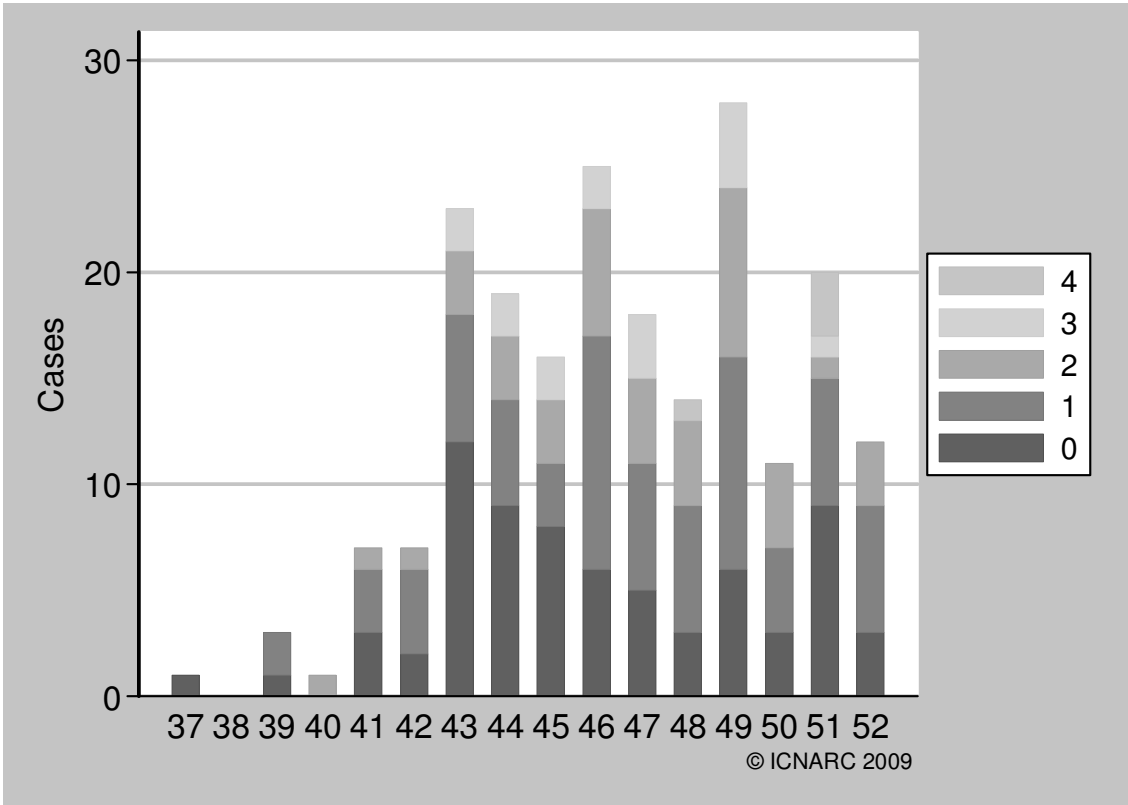
CURB-65 (severity of illness) by H1N1 status



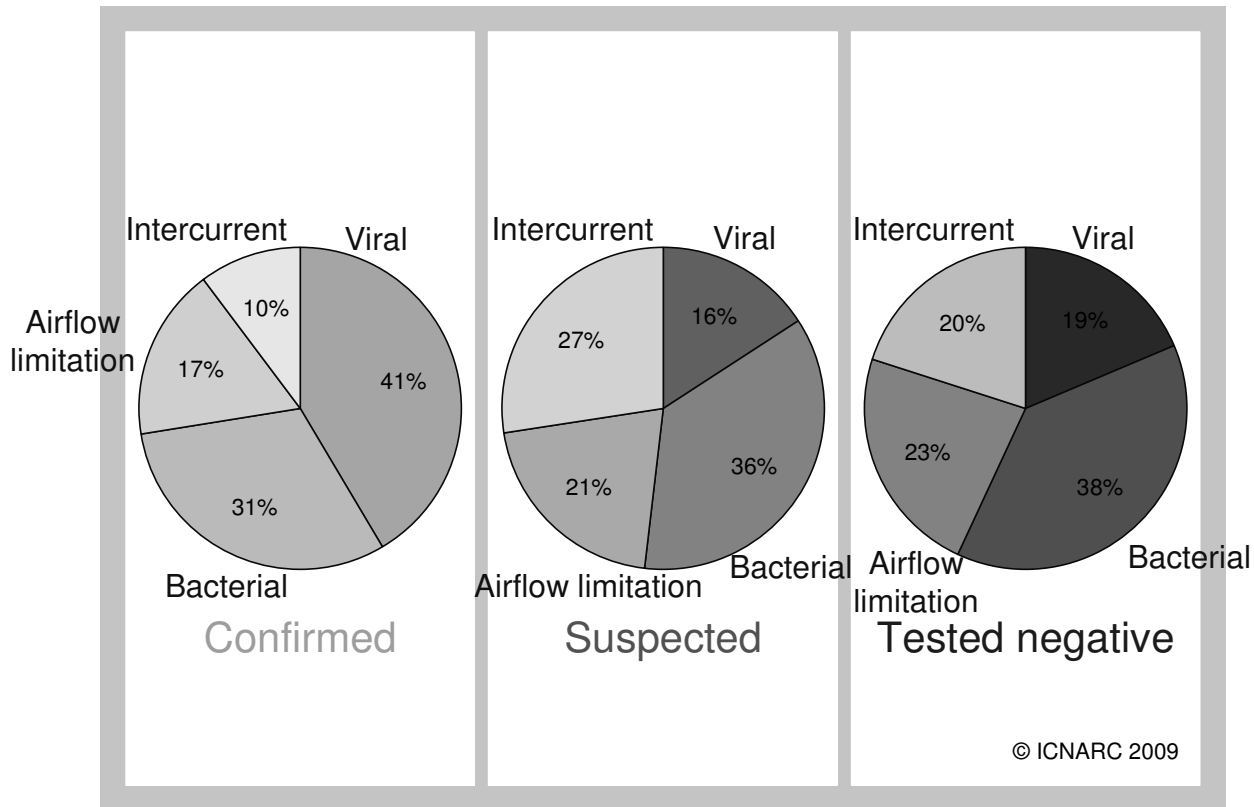
Confirmed H1N1 severity of illness (CURB-65)



Suspected H1N1 severity of illness (CURB-65)

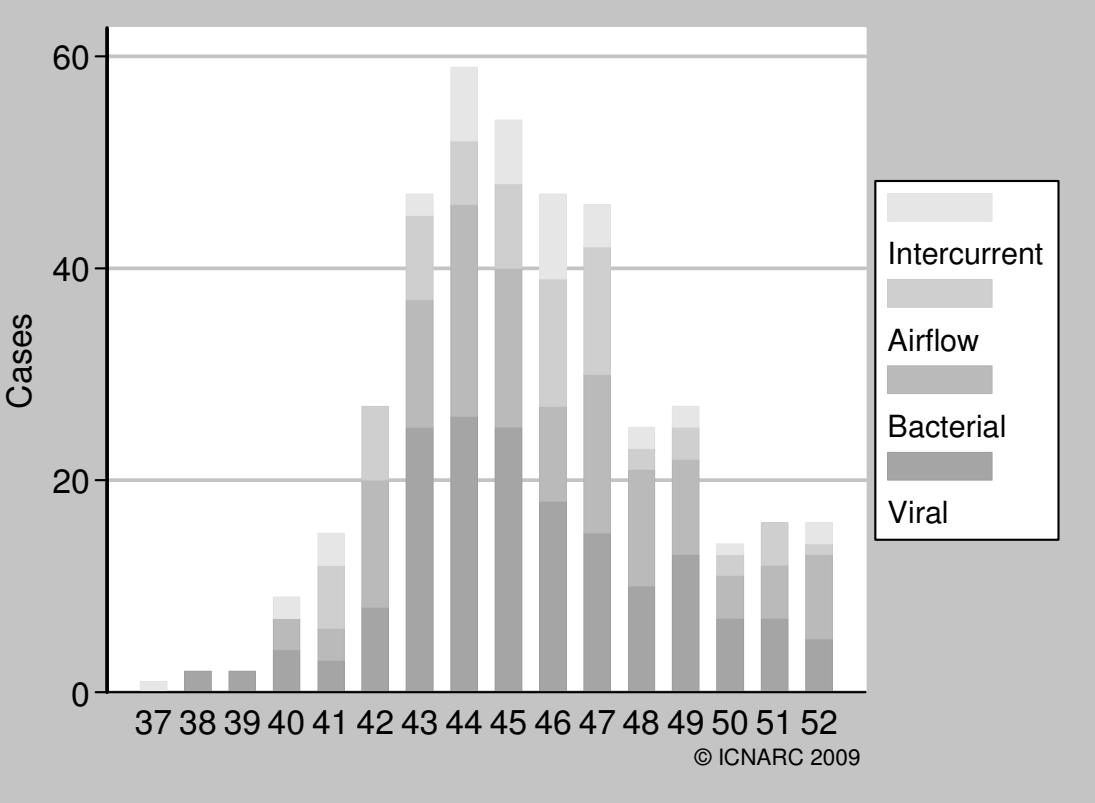


Reported presentation by H1N1 status

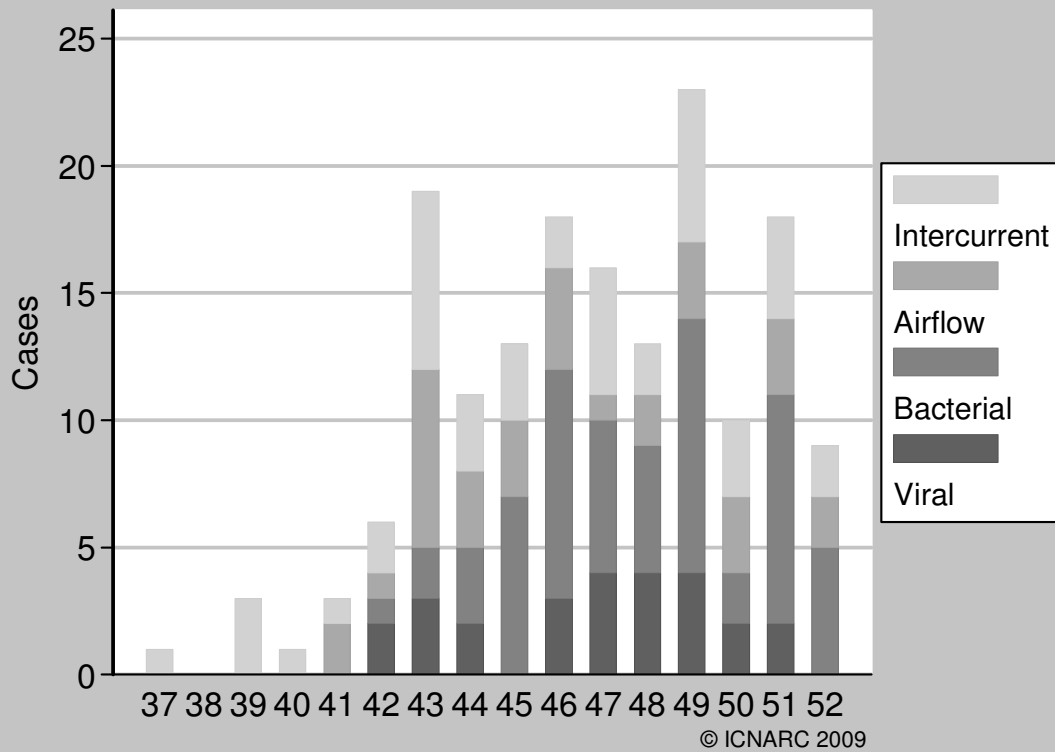


* Viral pneumonitis/ARDS; Secondary bacterial pneumonia; Exacerbation of airflow limitation; Other intercurrent illness

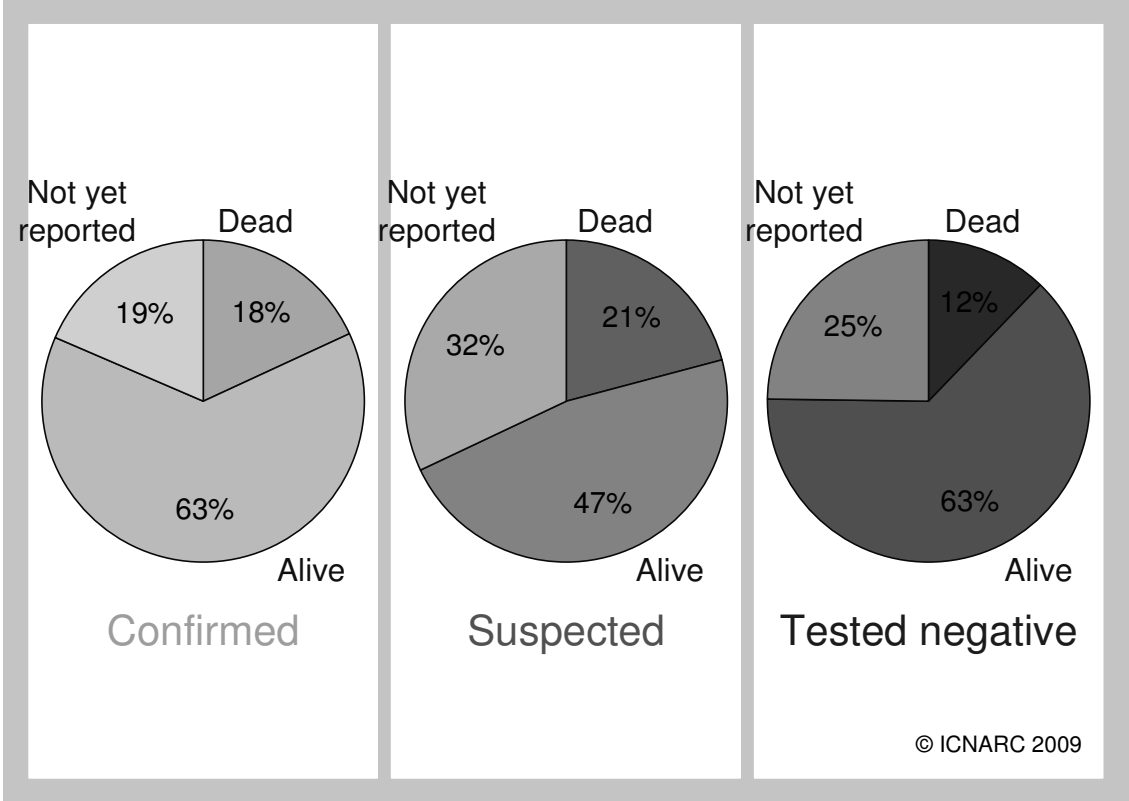
Confirmed H1N1 presentation



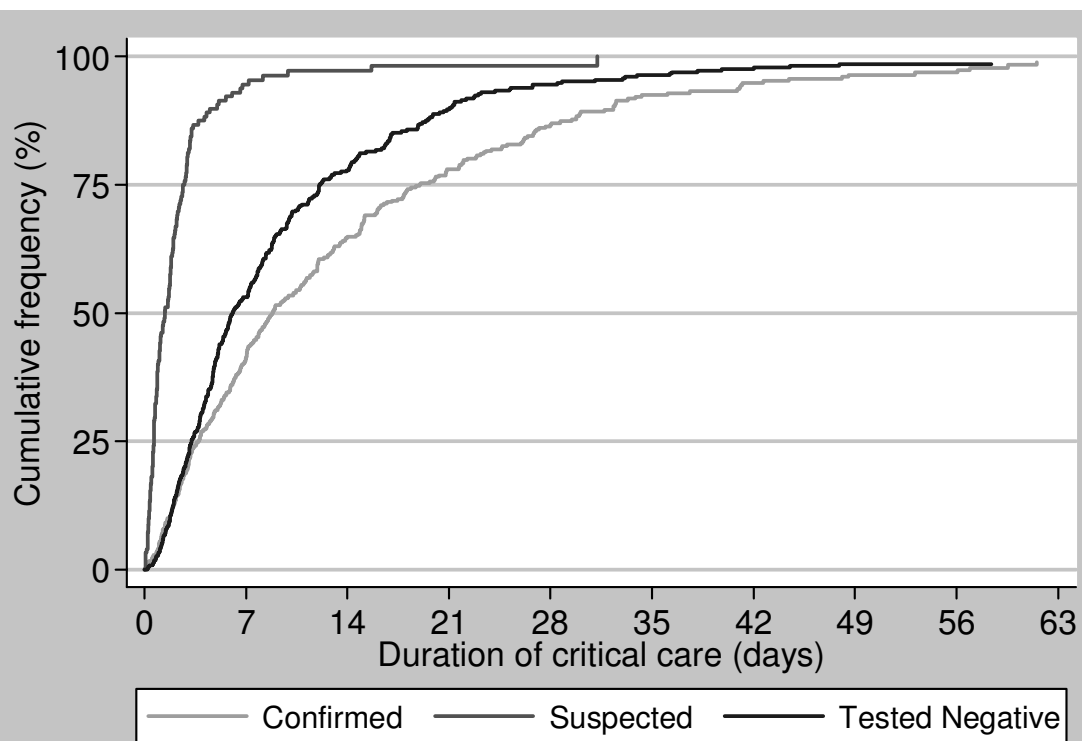
Suspected H1N1 presentation



Survival status at end of critical care by H1N1 status

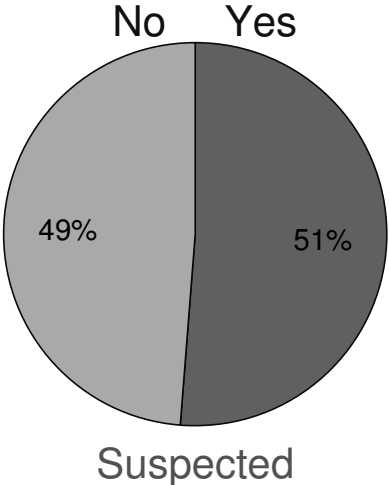
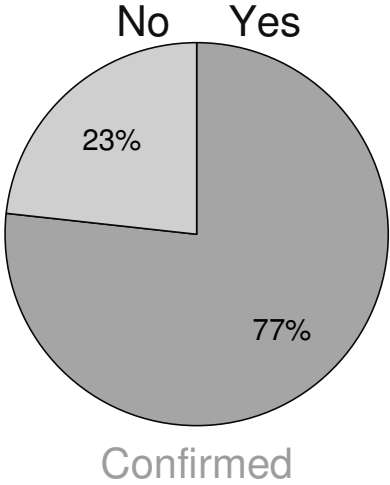


Duration of critical care



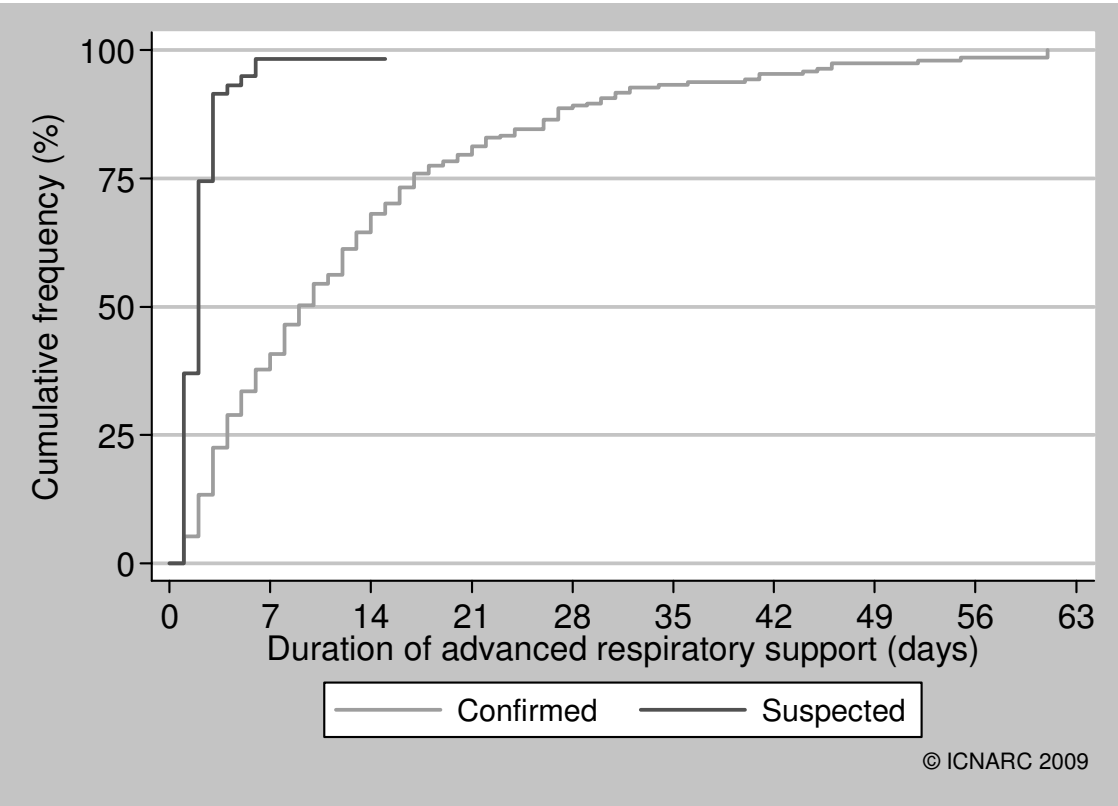
© ICNARC 2009

Organ support received at any time – advanced respiratory

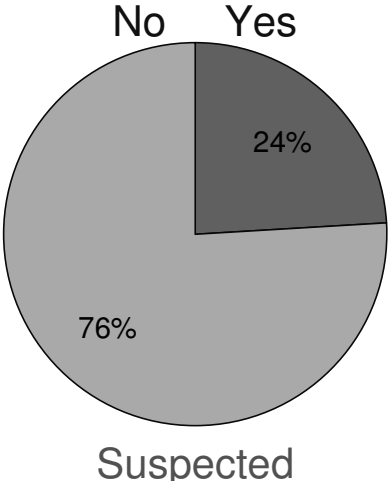
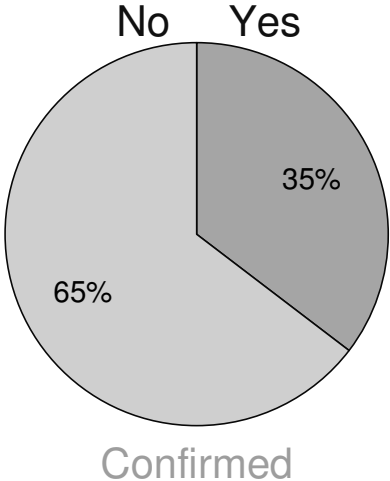


© ICNARC 2009

Duration of advanced respiratory support

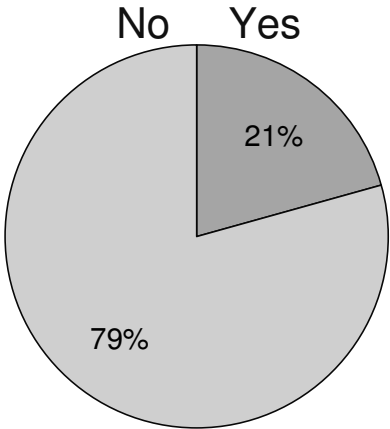


Organ support received at any time – advanced cardiovascular

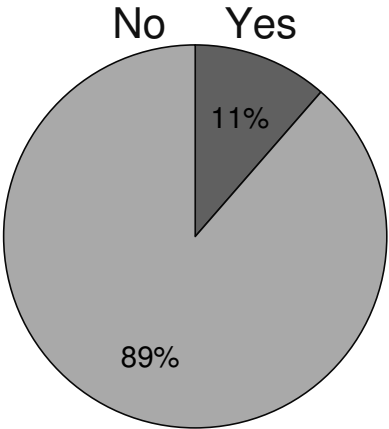


© ICNARC 2009

Organ support received at any time – renal



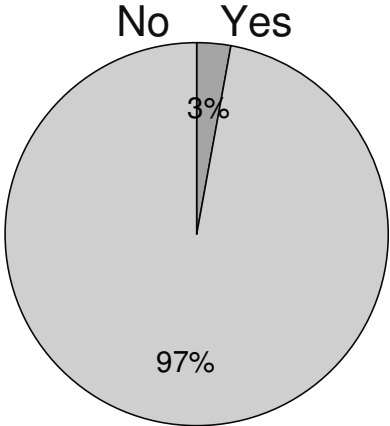
Confirmed



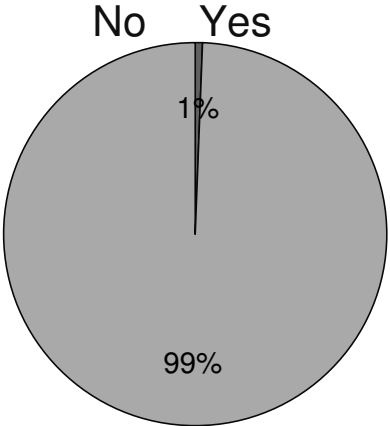
Suspected

© ICNARC 2009

Organ support received at any time – neurological



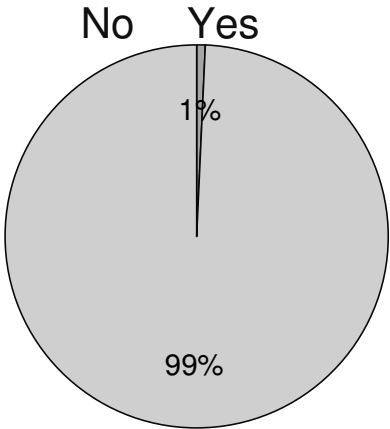
Confirmed



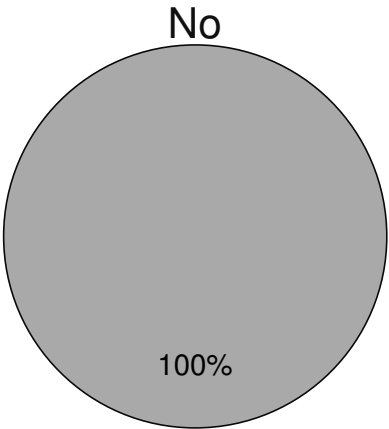
Suspected

© ICNARC 2009

Organ support received at any time – hepatic



Confirmed



Suspected

© ICNARC 2009

System capacity

- Critical care in receiving hospital 1,144/1,159
 - 11 Transfers
 - 4 Refused critical care
(1 futile, 2 lack of beds, 1 reason missing)
- Critical care in extended critical care area 31/ 1,083

Cox proportional hazards model: Time to death

Variable	Hazard ratio (95% CI)	P value
Age	Non-linear* (see next slide)	< 0.01
Sex: male	1.12 (0.83; 1.51)	0.46
Ethnicity: non-white	1.17 (0.77; 1.79)	0.46
Body composition: overweight (BMI 25-29.9)	1.02 (0.71; 1.47)	0.91
Body composition: obese (BMI 30+)	0.98 (0.64; 1.50)	0.94
Currently or recently pregnant	0.14 (0.02; 1.01)	0.05
Confirmed H1N1	0.98 (0.63; 1.52)	0.92
Antivirals received	0.95 (0.70; 1.30)	0.77
Presentation: secondary bacterial pneumonia [†]	0.94 (0.63; 1.40)	0.77
Presentation: exacerbation of airflow limitation [†]	0.59 (0.35; 0.99)	0.05
Presentation: intercurrent illness [†]	1.15 (0.74; 1.78)	0.53
Emergency department assessment	0.88 (0.62; 1.25)	0.46
Severe chronic organ dysfunction	1.56 (1.08; 2.25)	0.02
Moderate chronic organ dysfunction	1.21 (0.80; 1.81)	0.36
Immunocompromised	1.47 (0.91; 2.35)	0.11
Confusion	0.86 (0.60; 1.22)	0.39
Urea > 7 mmol l ⁻¹	1.07 (0.78; 1.46)	0.68
Respiratory rate > 30 min ⁻¹	1.09 (0.79; 1.50)	0.61
Systolic BP < 90 mmHg	1.24 (0.79; 1.95)	0.36
Base deficit > 2 mEq l ⁻¹	1.09 (0.79; 1.50)	0.59

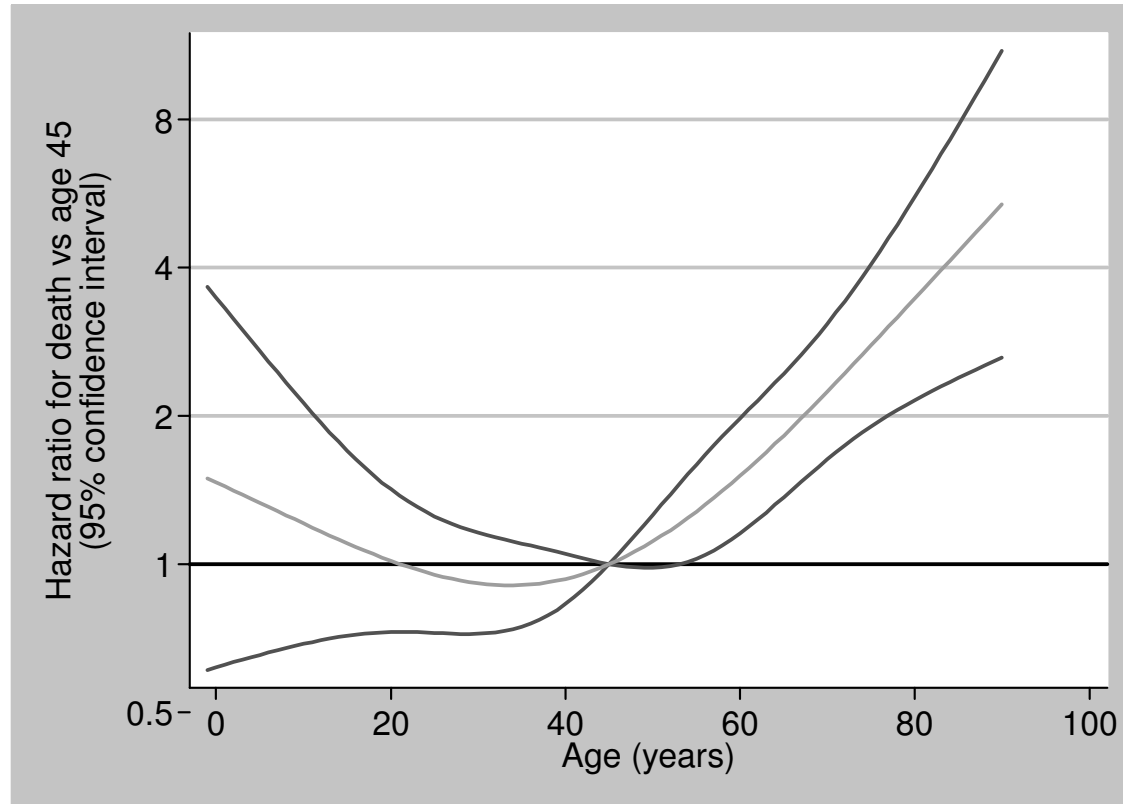
* restricted cubic spline with 3 degrees of freedom

[†] relative to viral pneumonitis/ARDS

Hazard ratios >1 indicate factors associated with increased risk

Hazard ratios <1 indicate factors associated with decreased risk

Cox proportional hazards model: Time to death



Cox proportional hazards model: Time to end of critical care

Variable	Hazard ratio (95% CI)	P value
Age	Non-linear* (see next slide)	< 0.01
Sex: male	1.05 (0.90; 1.23)	0.55
Ethnicity: non-white	0.98 (0.80; 1.20)	0.83
Body composition: overweight (BMI 25-29.9)	0.76 (0.62; 0.93)	0.01
Body composition: obese (BMI 30+)	0.87 (0.70; 1.07)	0.18
Currently or recently pregnant	0.84 (0.61; 1.16)	0.29
Confirmed H1N1	0.78 (0.62; 0.97)	0.03
Antivirals received	0.81 (0.69; 0.95)	0.01
Presentation: secondary bacterial pneumonia [†]	1.18 (0.96; 1.45)	0.11
Presentation: exacerbation of airflow limitation [†]	1.61 (1.27; 2.03)	< 0.01
Presentation: intercurrent illness [†]	1.39 (1.10; 1.75)	0.01
Emergency department assessment	1.11 (0.94; 1.31)	0.23
Severe chronic organ dysfunction	0.60 (0.49; 0.73)	< 0.01
Moderate chronic organ dysfunction	0.82 (0.68; 1.00)	0.05
Immunocompromised	0.94 (0.68; 1.29)	0.70
Confusion	0.76 (0.62; 0.92)	0.01
Urea > 7 mmol l ⁻¹	0.73 (0.61; 0.87)	< 0.01
Respiratory rate > 30 min ⁻¹	0.89 (0.75; 1.05)	0.16
Systolic BP < 90 mmHg	1.21 (0.94; 1.55)	0.13
Base deficit > 2 mEq l ⁻¹	0.99 (0.84; 1.17)	0.91

* restricted cubic spline with 3 degrees of freedom

[†] relative to viral pneumonitis/ARDS

Hazard ratios >1 indicate factors associated with shorter stay

Hazard ratios <1 indicate factors associated with longer stay

Cox proportional hazards model: Time to end of critical care

