

HITS-NS INCLUSION CRITERIA

- injured nearest an acute general hospital Emergency Department (AHED) but not more than one hour land ambulance journey from a neuroscience centre (NC)
- who are known / appear to be aged > 15 years old
- have signs of significant TBI such as reduced conscious level (GCS<13) and external signs of head injury
- who have no overt signs of ABC compromise



If you attend a patient who meets the inclusion criteria and you are based at one of the following stations:

Amble, Ashington, Barnard Castle, Billingham, Bishop Auckland, Blucher, Blyth, Carlin How, Coulby Newham, Fishburn, Fulwell, Gilesgate, Hartlepool South, Hawkey's Lane, Hebburn / Monkton, Middlesbrough, Pallion, Peterlee, Prudhoe, Seaham, South Shields, Stanley, Swalwell

Please:

- transport the patient to the nearest neuro centre (James Cook or RVI)
- contact the HITS-NS Research Paramedic:
XXXX
or by phone or text to XXXX

HITS-NS Pocket Cards for NWS

HITS-NS study  North West Ambulance Service  NHS Trust

HITS-NS INCLUSION CRITERIA

- Patients injured nearest an acute general hospital A&E (RBH, BVH or RLJ) but not more than one hour land ambulance journey from a neuroscience centre
- Who are known/appear to be > 15 years old
- Have signs of significant TBI such as reduced conscious level (GCS<13) and external signs of head injury
- Who have no overt signs of ABC compromise

If you attend a patient who meets the inclusion criteria & none of the exclusion criteria, and you are based at one of the following stations:

Accrington, Clitheroe, Blackpool, Nelson, Morecambe, Darwen, Ambleside, Fleetwood, Leyland, Kendal, Chorley, Barnoldswick, Broughton, Rossendale

please transport the patient to Royal Preston Hospital.

For every patient that meets the HITS-NS criteria, record "HITS" on the PRF (in treatment "other" box for EPRF) and text the incident number to HITS-NS Research Paramedic, Betty Pennington—Tel: *insert number*

Visit the study website: www.hits-ns.tarn.ac.uk

FRONT

HITS-NS EXCLUSION CRITERIA

- Injured more than 1 hour travelling time from the neuroscience centre
- Who are known/appear to be <16 years old
- Who do not have signs of TBI (who have full or mildly impaired consciousness, GCS>12)
- Who have obvious life threatening injuries affecting ABC:
 - A. Partial or complete airway obstruction/contamination present after simple manoeuvres, OR have been intubated or had a supraglottic device inserted
 - B. Respiratory rate <12 or >30, OR sucking chest wound OR signs of tension pneumothorax such as absent air entry into a hemithorax with contralateral tracheal deviation
 - C. Significant external haemorrhage not easily controlled by pressure, OR amputation above wrist/ankle OR absence of radial pulse

For paramedics who attend patients that meet the HITS-NS criteria & are based at any of the following stations: Altham, Burscough, Blackburn, Burnley, Lancaster, Thornton, Grange, Lytham, Preston, Skelmersdale, Wesham, Sedbergh, Walmer Bridge, or Stacksteads. Please transport the patient to the nearest A&E—if that is at RL, RBH or BVH then remember to record "HITS" on the PRF (in treatment "other" box for EPRF) and text the incident number to Betty Pennington on Tel: *insert number*

BACK



Head Injury Transportation Straight to Neurosurgery study

Paramedics, get involved with an important new research study happening near you!

INCLUSION CRITERIA

- Injured nearest an acute general hospital emergency department but not more than one hour land ambulance journey from a neuroscience centre
- Who are known/appear to be aged >15 years old
- Have signs of significant traumatic brain injury such as reduced consciousness level (GCS <13) and external signs of head injury
- Who have no overt signs of ABC compromise

If you attend a patient who meets the inclusion criteria and you are based at one of the following stations:

Accrington, Clitheroe, Blackpool, Nelson, Morecambe, Darwen, Ambleside, Fleetwood, Leyland, Kendal, Chorley, Barnoldswick, Broughton, Rossendale

Please:

- Transport the patient to the nearest neuroscience centre (Royal Preston Hospital)
- Record "HITS" on the PRF and text the incident number to tel: 07812305604

EXCLUSION CRITERIA

- Injured more than 1 hour travelling time from the neuroscience centre
- Who are known/appear to be <16 years old
- Who do not have signs of TBI (who have full or mildly impaired consciousness—GCS >12)
- Who have obvious life threatening injuries affecting ABC:
 - A. Partial or complete airway obstruction/contamination present after simple manoeuvres OR have been intubated or had a supraglottic device inserted
 - B. Respiratory rate <12 or >30 OR sucking chest wound OR signs of tension pneumothorax
 - C. Significant external haemorrhage not easily controlled by pressure OR amputation above wrist/ankle OR absence of radial pulse

If your patient meets the criteria to be a HITS-NS patient but you are based at one of these stations: Altham, Burscough, Blackburn, Burnley, Lancaster, Thornton, Grange, Lytham, Preston, Skelmersdale, Wesham, Sedbergh, Walmer Bridge, or Stacksteads then please take the patient to the nearest A&E but remember to record "HITS" on the PRF and text the incident number to tel: 07812305604

For further information visit the HITS-NS website: www.hits-ns.tarn.ac.uk

Password for paramedic pages is: 4pta2i

Or contact your research paramedic: Betty Pennington

Email: XXXX

Tel: XXXX


The TRAUMA
Audit & Research
NETWORK



MANCHESTER
1824
The University of Manchester



University Hospitals 
of Morecambe Bay
NHS Foundation Trust


Lancashire Teaching Hospitals 
NHS Foundation Trust

Blackpool Teaching Hospitals 
NHS Foundation Trust

East Lancashire Hospitals 
NHS Trust

North East Ambulance Service 
NHS Foundation Trust



North West Ambulance Service 
NHS Trust

Head Injury Transportation Straight to Neurosurgery study

Patients from this hospital are being recruited into an important new research study: Head Injury Transportation Straight to Neurosurgery (HITS-NS) - a feasibility study.

The study is including patients that paramedics have assessed as being suspected of having a significant traumatic brain injury at the scene of the incident.

It is likely that the Research Paramedic from the North West Ambulance Service will be phoning up your ward/department for further details about these patients, and to discuss when it will be appropriate to organise gaining consent from the patient, and/or their relatives, to stay in the study.

For further information visit the HITS-NS website: www.hits-ns.tarn.ac.uk

Or contact your research paramedic: Betty Pennington

Email: xxxx

Tel: xxxx



Head Injury Transportation Straight to Neurosurgery

Patients from this hospital are being recruited into an important new research study: Head Injury Transportation Straight to Neurosurgery (HITS-NS) - a feasibility study.

The study is including patients that paramedics have assessed as being suspected of having a significant traumatic brain injury at the scene of the incident.

It is likely that the Research Paramedic from North East Ambulance Service will be phoning up your ward/department for further details about these patients, and to discuss when it will be appropriate to organise gaining consent from the patient, and/or their relatives, to stay in the study.

**For further information visit the HITS-NS
website: www.hits-ns.tarn.ac.uk**

**Or contact the NEAS research paramedic:
Graham McClelland**

Email: XXXX

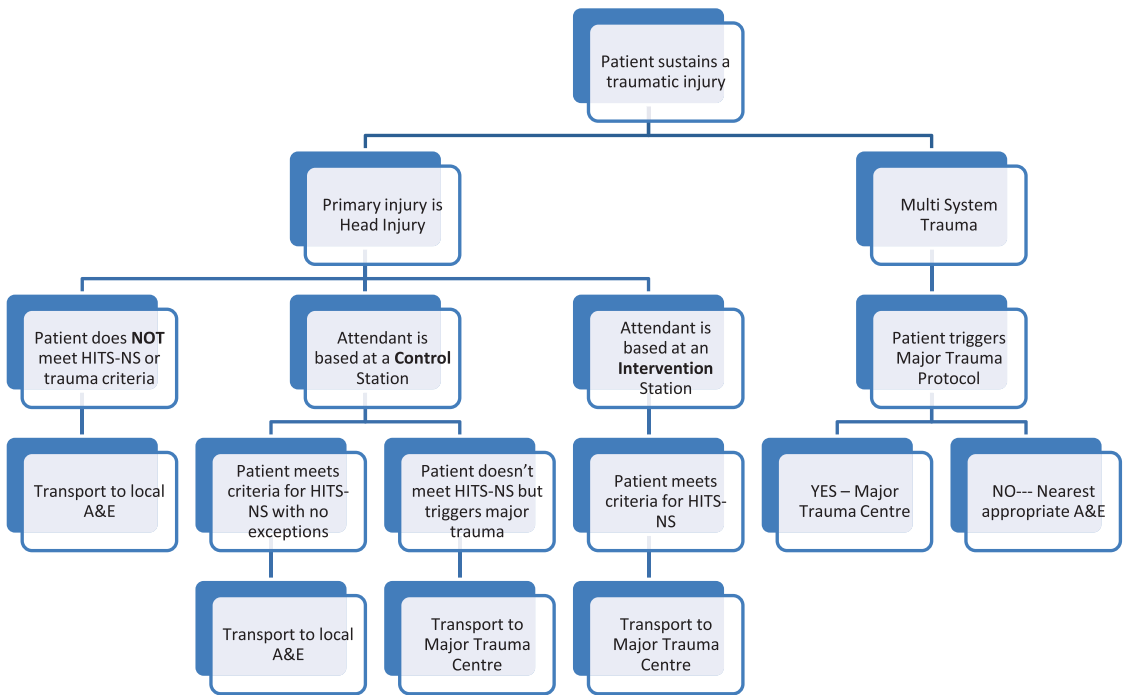
Tel: XXXX or XXXX

HITS-NS Trial

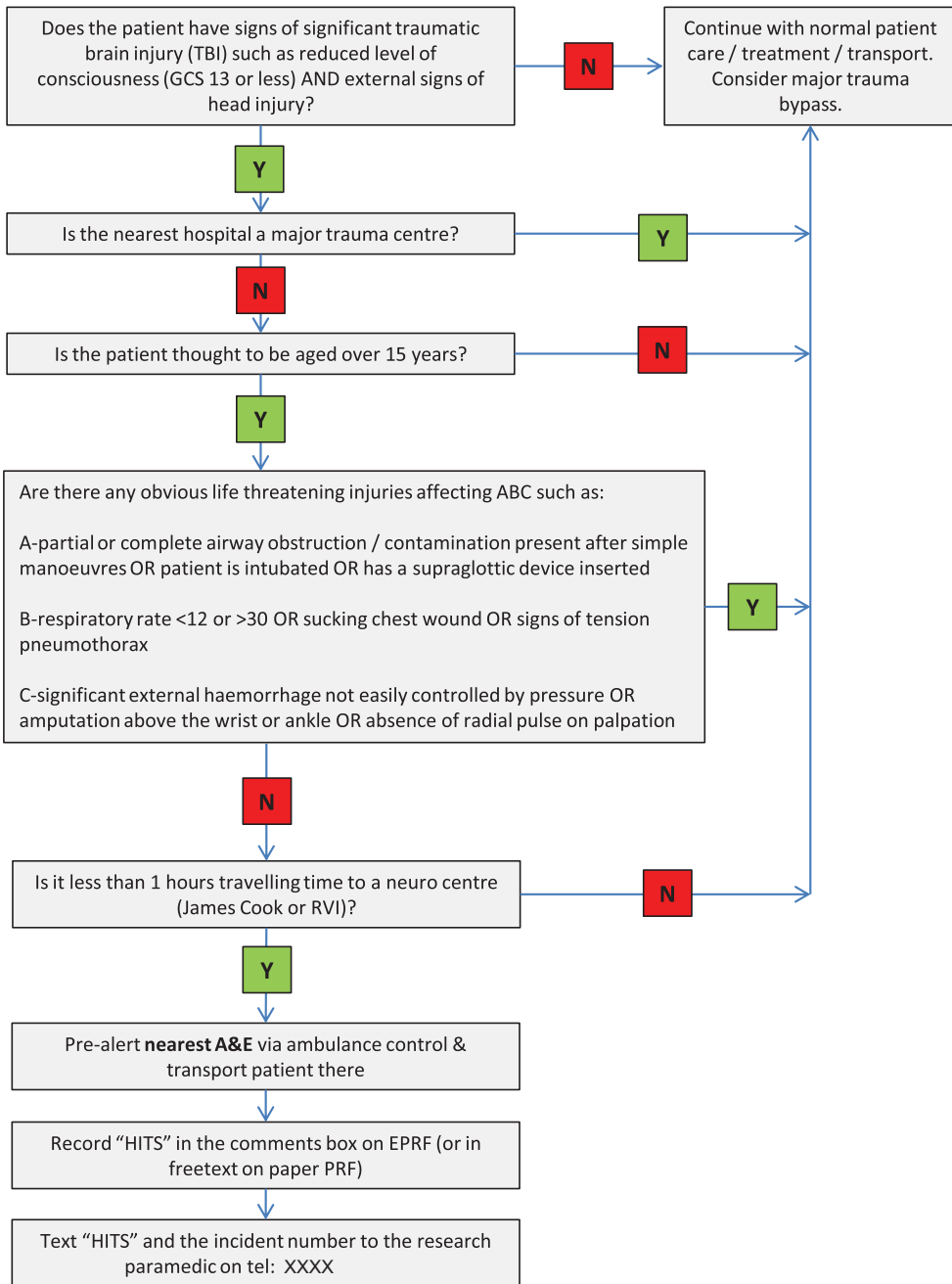
“Head Injury Transportation Straight to Neurosurgery”

A feasibility study

NEAS paramedic training presentation



HITS-NS Pathway for CONTROL group paramedics



HITS-NS Trial

**“Head Injury Transportation
Straight to Neurosurgery”
A feasibility study**

NWAS Paramedic Self Directed Learning Pack

