

Kids, Adults Together (KAT): programme evaluation

INFORMATION FOR PARENTS

Background to the study

Your child's class is taking part in an evaluation of a programme called the Kids, Adults Together programme (KAT). The programme aims to encourage young people to develop a responsible attitude to drinking alcohol by making families more aware of ways in which people use and talk about alcohol.

The KAT programme is run in partnership with Gwent Police. The DECIPHer research centre at Cardiff University is undertaking an evaluation of the KAT programme. The evaluation will assist in planning the expansion of the programme into other areas of Wales and improve understanding of how young people learn about and use alcohol.

The evaluation employs a randomised controlled trial design and is conducted across 8 schools. This means that schools have been randomly allocated to either '*intervention*' or '*control*' status. Schools allocated to the intervention status run the KAT programme. Schools allocated to the control group do not receive the KAT programme and just carry on as normal.

How the evaluation is being carried out

- A telephone interview with parents
- Two questionnaires for pupils (completed during school time)
- Researchers' attendance at schools
- Focus groups with children
- Interviews with parents
- Interviews with school staff

What you are being asked to do

For parents, taking part in the research will mainly involve a telephone interview. The interview is about family life, and there are also some questions about alcohol. You can decide at the time whether you want to take part in an interview.

For your child, taking part in the research would involve completing two questionnaires, which include questions about family life, and also about young people's attitudes and behaviour in relation to alcohol. We may also invite your son/daughter to take part in a focus group discussion.

As a way of saying thank you, all families which participate in the research will receive a £15 gift voucher.

Ethical approval

The evaluation has been approved by Cardiff School of Social Sciences Research Ethics Committee.

Confidentiality

Your answers to the questionnaire will not be seen by anyone outside the evaluation team and will be anonymous. Some answers may be quoted in presentations and written reports but any details which could lead to the identification of individuals or schools would not be included. Completed questionnaires will be kept in a locked cabinet and only the evaluation team will have access. Data from questionnaires will also be stored electronically in a folder to which only the evaluation team will have access through password-protected personal computers. Questionnaires will be kept for five years after the end of the project, and will then be destroyed (in accordance with the Data Protection Act 1998).

Every effort will be made to ensure that the identity of individuals and schools taking part is not revealed. However, the researchers are obliged to disclose information about circumstances which may result in harm to someone.

Results

Data from this study will be used to write a report in academic papers. Findings will be presented at an event for participants, practitioners and policy makers and to children at the schools taking part (provided this is authorised by their Head teachers). Presentations will also be made at international conferences and to other interested groups.

Further information

If you have any questions or would like to offer comments or suggestions, please get in touch:

Heather Rothwell (study manager)

DECIPHer

Cardiff School of Social Sciences

Cardiff University

1-3 Museum Place

Cardiff CF10 3BD

Telephone: 02920 870296

Fax: 02920 879054

rothwellh@cardiff.ac.uk

KIDS

ADULTS

TOGETHER (KAT)

EVALUATION STUDY

Interview guide for parents



**£15 GIFT
VOUCHER
FOR
TAKING
PART**

DECIPHer

Development and Evaluation of Complex
Interventions for Public Health Improvement
A UKCRC Public Health Research Centre of Excellence





**FOR YOUR INTEREST IN OUR
RESEARCH INTO
THE KIDS, ADULTS TOGETHER
PROGRAMME (KAT)**

**PLEASE READ THROUGH THE INFORMATION SHEET
AND RETURN THE CONSENT FORM IF YOU ARE HAPPY
TO TAKE PART. YOU CAN CONTACT US IF YOU HAVE
ANY QUESTIONS OR CONCERNS.**

**SOMEONE WILL PHONE TO ASK YOU SOME QUESTIONS
ABOUT YOURSELF AND YOUR FAMILY.**

**PLEASE KEEP THIS BOOKLET SOMEWHERE SAFE UNTIL
THEY PHONE.**

**THIS BOOKLET WILL MAKE IT EASIER FOR YOU TO
ANSWER THE QUESTIONS.**

**PLEASE ASK THE TELEPHONE INTERVIEWER IF YOU
DON'T UNDERSTAND ANY OF THE QUESTIONS.**



**WE ENCLOSE SPARE COPIES OF THIS BOOKLET, THE
INFORMATION SHEET AND CONSENT FORM IN CASE
THERE IS ANOTHER ADULT IN YOUR HOUSEHOLD WHO
WOULD LIKE TO BE INTERVIEWED.**



FAMILY LIFE

1.1.1 WHO DO YOU LIVE WITH?

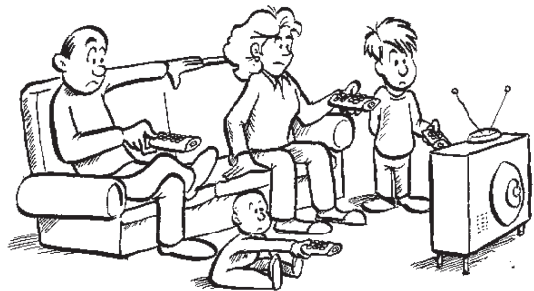
- **SPOUSE**
- **COHABITEE**
- **SON-IN-LAW/DAUGHTER-IN-LAW**
- **PARENT/GUARDIAN**
- **STEP-PARENT**
- **FOSTER PARENT**
- **PARENT-IN-LAW**
- **GRANDPARENT**
- **CIVIL PARTNER**
- **SON/DAUGHTER (INCLUDING ADOPTED)**
- **STEPSON/STEPDAUGHTER**
- **FOSTER CHILD**
- **BROTHER/SISTER (INCLUDING ADOPTED)**
- **STEP-BROTHER/STEP-SISTER**
- **FOSTER BROTHER/FOSTER SISTER**
- **BROTHER-IN-LAW/SISTER-IN-LAW**
- **GRANDCHILD**
- **OTHER RELATIVE**
- **OTHER NON-RELATIVE**

FAMILY LIFE



1.2.1 HOW OFTEN DO YOU AND YOUR FAMILY GET TOGETHER?

- **EVERY DAY**
- **MOST DAYS**
- **ABOUT ONCE A WEEK**
- **LESS OFTEN**
- **NEVER**





1.3.1 WHAT'S COMMUNICATION LIKE IN YOUR FAMILY?

- **STRONGLY DISAGREE**
- **GENERALLY DISAGREE**
- **UNDECIDED**
- **GENERALLY AGREE**
- **STRONGLY AGREE**



ALCOHOL USE



© Seamartini Graphics * www.ClipartOf.com/1066109

2.1.1 HOW OFTEN HAVE YOU TALKED TO YOUR CHILD(REN) ABOUT ALCOHOL?

- **NOT AT ALL**
- **ONCE**
- **TWICE**
- **3 TIMES OR MORE**
- **DON'T KNOW**





ALCOHOL USE

(2.2.2)

1 UNIT



HALF A PINT OF NORMAL STRENGTH BEER, LAGER OR CIDER (4% ABV)

ONE SINGLE (25ML) MEASURE OF SPIRITS (40% ABV)

1.5 UNITS

A 330ML BOTTLE OF NORMAL STRENGTH (4% ABV) BEER, LAGER OR CIDER

A SMALL (125ML) GLASS OF WINE

A 35 (ML) MEASURE OF SPIRITS (40%ABV)

A 330ML BOTTLE OF ALCOPOP



2 UNITS

A PINT OF NORMAL STRENGTH (4% ABV) BEER, LAGER OR CIDER

A STANDARD (175ML) GLASS OF WINE

A DOUBLE MEASURE OF SPIRITS (40% ABV)



3 UNITS

A PINT OF PREMIUM STRENGTH (5% ABV) BEER / LAGER / CIDER

A LARGE (250ML) GLASS OF WINE



10 UNITS

A 750ML BOTTLE OF WINE

ALCOHOL USE



2.2.4 HOW OFTEN HAVE YOU HAD A DRINK CONTAINING ALCOHOL?

- **MONTHLY OR LESS**
- **2-4 TIMES A MONTH**
- **2-3 TIMES A WEEK**
- **4 OR MORE TIMES A WEEK**

2.2.5 HOW MANY UNITS OF ALCOHOL DID YOU HAVE?

- **1 TO 2**
- **3 OR 4**
- **5 OR 6**
- **7 TO 9**
- **10 OR MORE**



ALCOHOL USE



© Seamartini Graphics * www.ClipartOf.com/1066109

2.2.5 HOW OFTEN DID YOU HAVE A LOT TO DRINK ON ONE OCCASION?

- **NEVER**
- **LESS THAN MONTHLY**
- **MONTHLY**

PERSONAL INFORMATION



3.2.1 WHAT IS THE HIGHEST LEVEL OF QUALIFICATIONS YOU HAVE RECEIVED?

- **NO FORMAL QUALIFICATIONS**
- **GCSE GRADE D-G/CSE GRADE 2-5 OR STANDARD GRADE LEVEL 4-6**
- **LEVEL OR GCSE EQUIVALENT (GRADE A-C) OR O GRADE/CSE EQUIVALENT**
- **A-LEVELS OR HIGHERS**
- **ONC/NATIONAL LEVEL BTEC**
- **HIGHER EDUCATIONAL QUALIFICATION BELOW DEGREE LEVEL**
- **DEGREE LEVEL QUALIFICATION (OR EQUIVALENT)**
- **POSTGRADUATE DEGREE (E.G. POSTGRADUATE DIPLOMA, MASTERS, PHD)**
- **OTHER QUALIFICATIONS, INCLUDING FOREIGN QUALIFICATIONS**
- **DON'T KNOW**



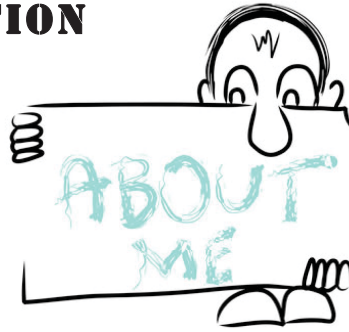
PERSONAL INFORMATION



3.3.1 WHAT'S YOUR RELATIONSHIP STATUS?

- **SINGLE, THAT IS, NEVER MARRIED AND NOT IN A RELATIONSHIP?**
- **SINGLE, THAT IS, NEVER MARRIED BUT IN A RELATIONSHIP?**
- **MARRIED AND LIVING WITH YOUR HUSBAND/WIFE?**
- **A CIVIL PARTNER IN A LEGALLY-RECOGNISED CIVIL PARTNERSHIP?**
- **MARRIED AND SEPARATED FROM YOUR HUSBAND/WIFE?**
- **DIVORCED?**
- **OR WIDOWED?**

PERSONAL INFORMATION



3.4.1 TO WHICH ETHNIC GROUP DO YOU CONSIDER YOU BELONG?

- **WHITE BRITISH**
- **WHITE IRISH**
- **ANY OTHER WHITE BACKGROUND**
- **WHITE AND BLACK CARIBBEAN**
- **WHITE AND BLACK AFRICAN**
- **WHITE AND ASIAN**
- **ANY OTHER MIXED BACKGROUND**
- **INDIAN**
- **PAKISTANI**
- **BANGLADESHI**
- **ANY OTHER ASIAN BACKGROUND**
- **CARIBBEAN**
- **AFRICAN**
- **ANY OTHER BLACK BACKGROUND**
- **CHINESE**
- **ANY OTHER ETHNIC GROUP**



PERSONAL INFORMATION

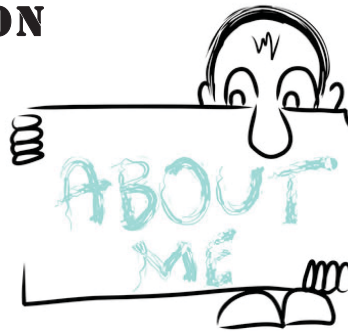


3.5.1 ARE YOU . . .

- **IN FULL-TIME PAID WORK, AS AN EMPLOYEE OR SELF EMPLOYED**
- **IN PART-TIME PAID WORK, AS AN EMPLOYEE OR SELF EMPLOYED**
- **UNEMPLOYED AND SEEKING WORK**
- **OUT OF THE LABOUR FORCE – NOT SEEKING WORK**
- **IN FULL-TIME EDUCATION AND TRAINING**
- **IN PART-TIME EDUCATION AND TRAINING**



PERSONAL INFORMATION



3.6.4 (D) WHAT DO YOU DO?

- **MODERN PROFESSIONAL OCCUPATION**
SUCH AS: TEACHER – NURSE – PHYSIOTHERAPIST – SOCIAL WORKER – WELFARE OFFICER – ARTIST – MUSICIAN – POLICE OFFICER (SERGEANT OR ABOVE) – SOFTWARE DESIGNER
- **CLERICAL AND INTERMEDIATE OCCUPATION**
SUCH AS: SECRETARY – PERSONAL ASSISTANT – CLERICAL WORKER – OFFICE CLERK – CALL CENTRE AGENT – NURSING AUXILIARY – NURSERY NURSE
- **SENIOR MANAGER OR ADMINISTRATOR**
(USUALLY RESPONSIBLE FOR PLANNING, ORGANISING AND CO-ORDINATING WORK AND FOR FINANCE) SUCH AS: FINANCE MANAGER – CHIEF EXECUTIVE
- **TECHNICAL AND CRAFT OCCUPATION**
SUCH AS: MOTOR MECHANIC – FITTER – INSPECTOR – PLUMBER – PRINTER – TOOL MAKER – ELECTRICIAN – GARDENER – TRAIN DRIVER



- **SEMI-ROUTINE MANUAL AND SERVICE OCCUPATION**
SUCH AS: POSTAL WORKER – MACHINE OPERATIVE – SECURITY GUARD – CARETAKER – FARM WORKER – CATERING ASSISTANT – RECEPTIONIST – SALES ASSISTANT
- **ROUTINE MANUAL AND SERVICE OCCUPATION**
SUCH AS: HGV DRIVER – VAN DRIVER – CLEANER – PORTER – PACKER – SEWING MACHINIST – MESSENGER – LABOURER – WAITER / WAITRESS – BAR STAFF
- **MIDDLE OR JUNIOR MANAGER**
SUCH AS: OFFICE MANAGER – RETAIL MANAGER – BANK MANAGER – RESTAURANT MANAGER – WAREHOUSE MANAGER – PUBLICAN
- **TRADITIONAL PROFESSIONAL OCCUPATION**
SUCH AS: ACCOUNTANT – SOLICITOR – MEDICAL PRACTITIONER – SCIENTIST – CIVIL / MECHANICAL ENGINEER



THANK YOU

**YOUR FAMILY WILL RECEIVE A £15 GIFT VOUCHER AS A TOKEN
OF OUR APPRECIATION.**



Evaluation of the Kids, Adults Together Programme

PARENT / CARER CONSENT FORM One consent form to be completed by each adult

Please initial box

1. I confirm that I have read and understood the information sheet for the above study. I have had the opportunity to consider the information, ask questions and have had these answered satisfactorily

2. I understand that my participation is voluntary and that I am free to withdraw at any time prior to the end of the study, without giving any reason, without my access to services being affected

3. I agree to take part in the above study

4. I agree to provide questionnaire data for above study as part of a telephone interview

Name of Participant Date Signature

Researcher Date Signature

2 copies: 1 for participant, 1 for research file

